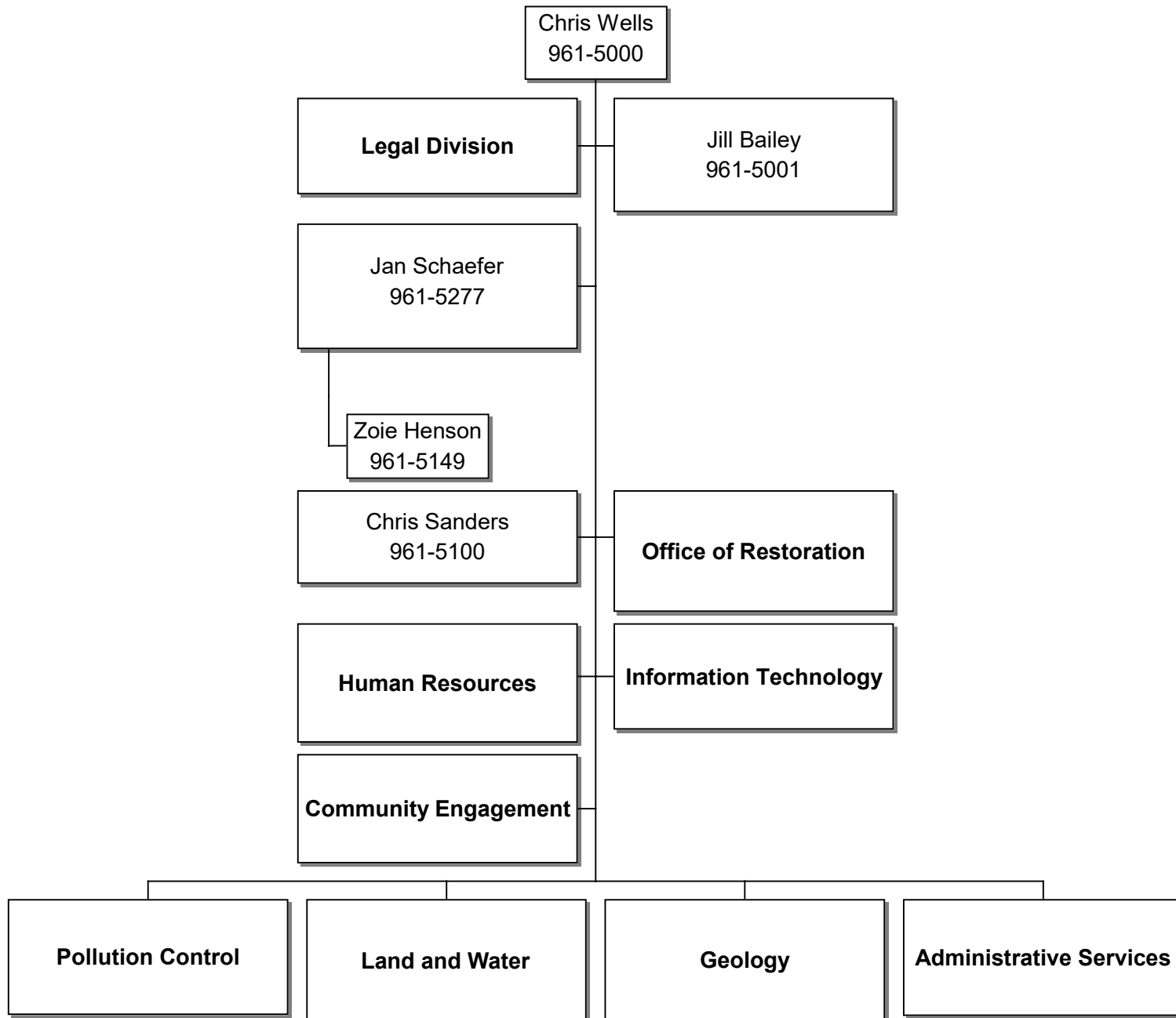


**MISSISSIPPI DEPARTMENT OF ENVIRONMENTAL QUALITY**

**Executive Director's Office**

**Page 1**

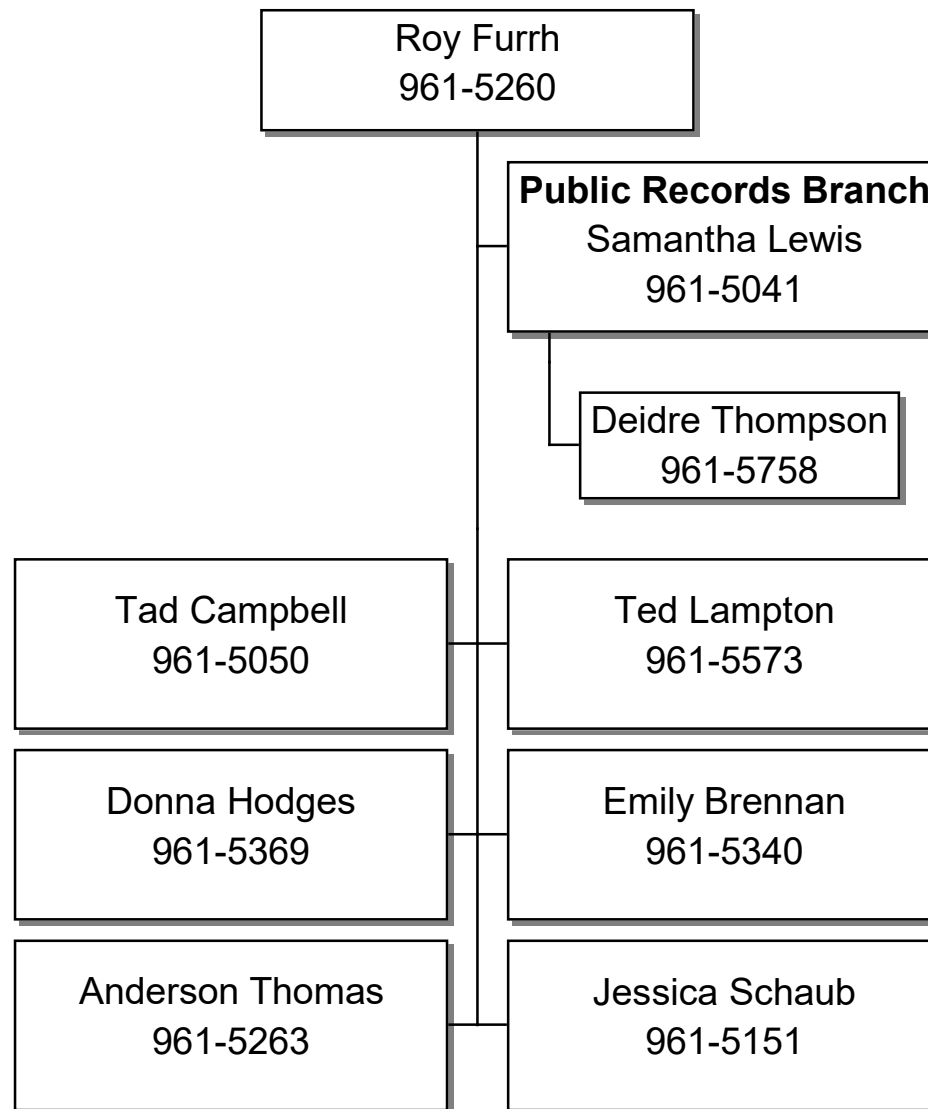


MISSISSIPPI DEPARTMENT OF ENVIRONMENTAL QUALITY

EXECUTIVE DIRECTOR'S OFFICE

Legal Division

Page 2

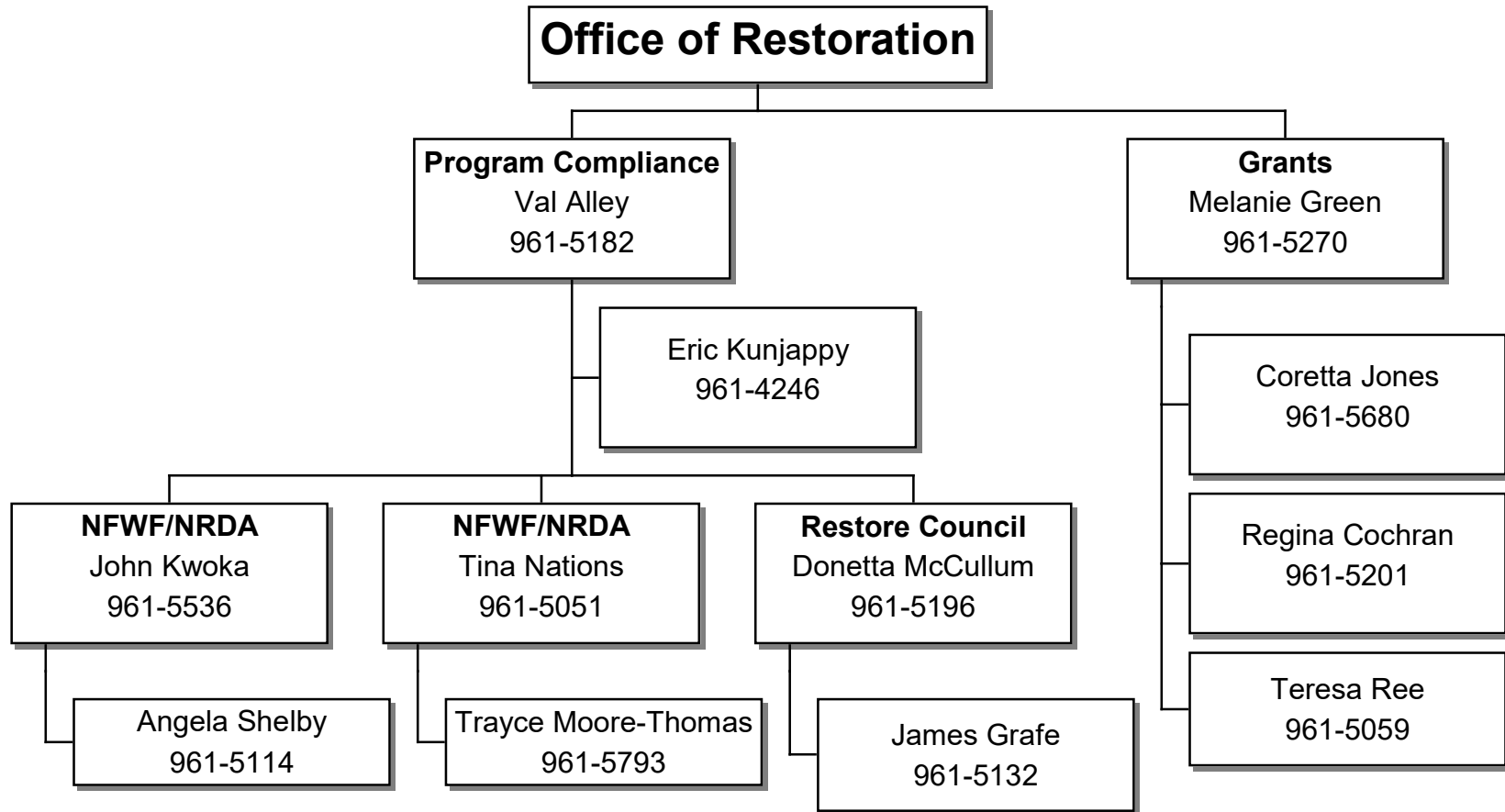


# MISSISSIPPI DEPARTMENT OF ENVIRONMENTAL QUALITY

EXECUTIVE DIRECTOR'S OFFICE

Office of Restoration

Page 4

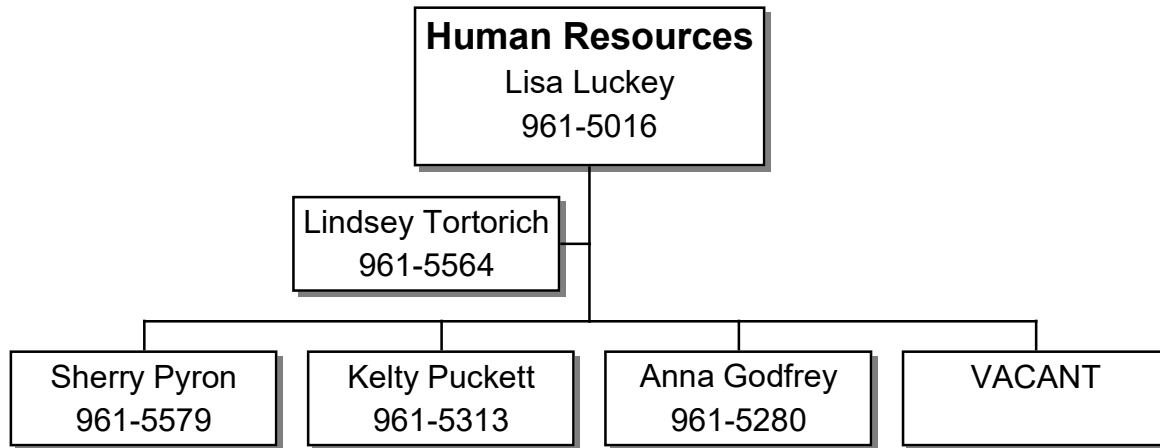


**MISSISSIPPI DEPARTMENT OF ENVIRONMENTAL QUALITY**

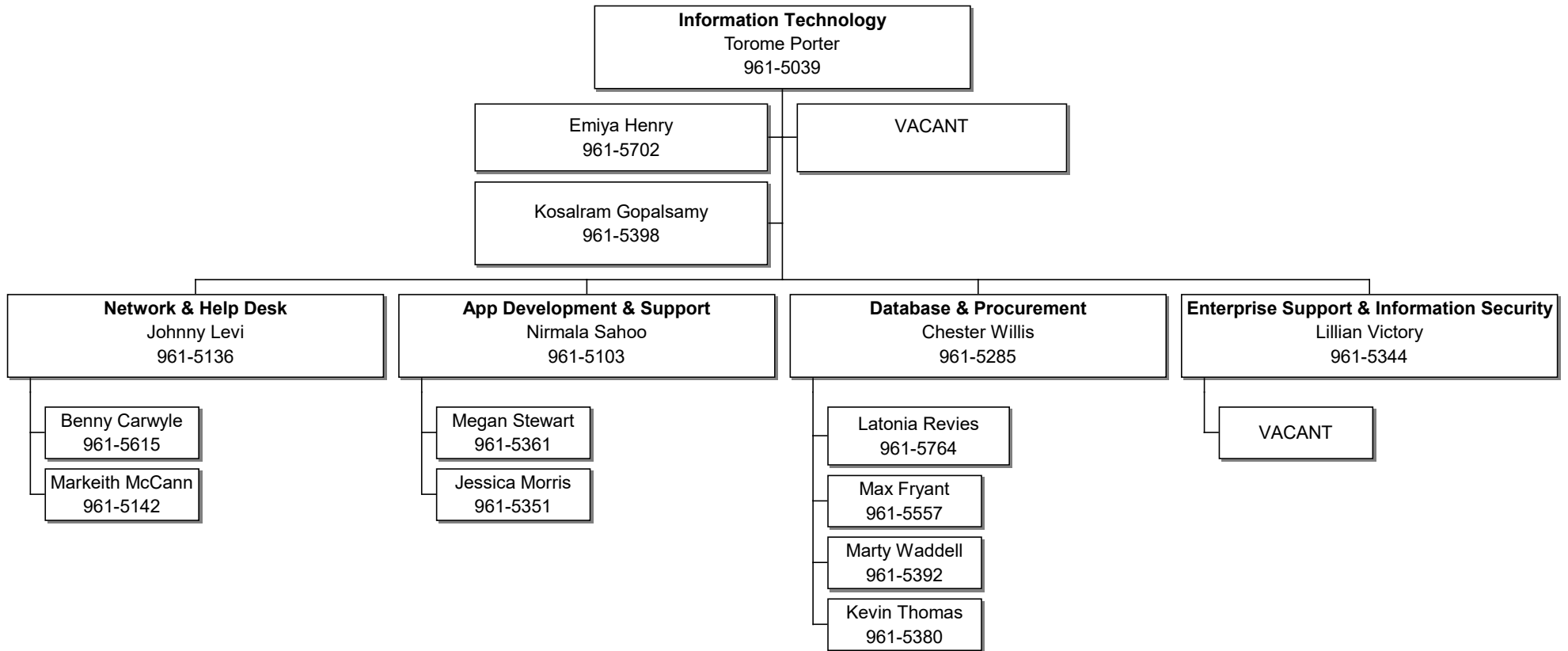
**Executive Director's Office**

**Human Resources**

**Page 5**



MISSISSIPPI DEPARTMENT OF ENVIRONMENTAL QUALITY  
EXECUTIVE DIRECTOR'S OFFICE  
Office of Information Technology  
Page 6

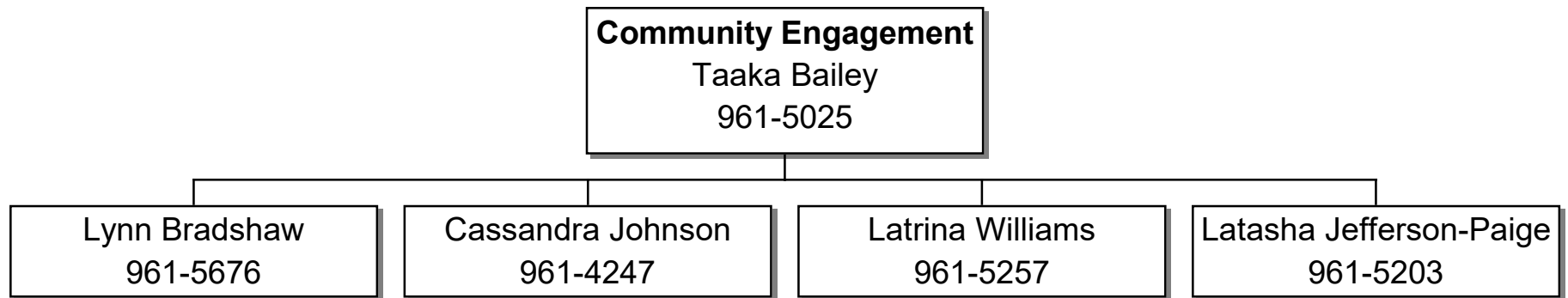


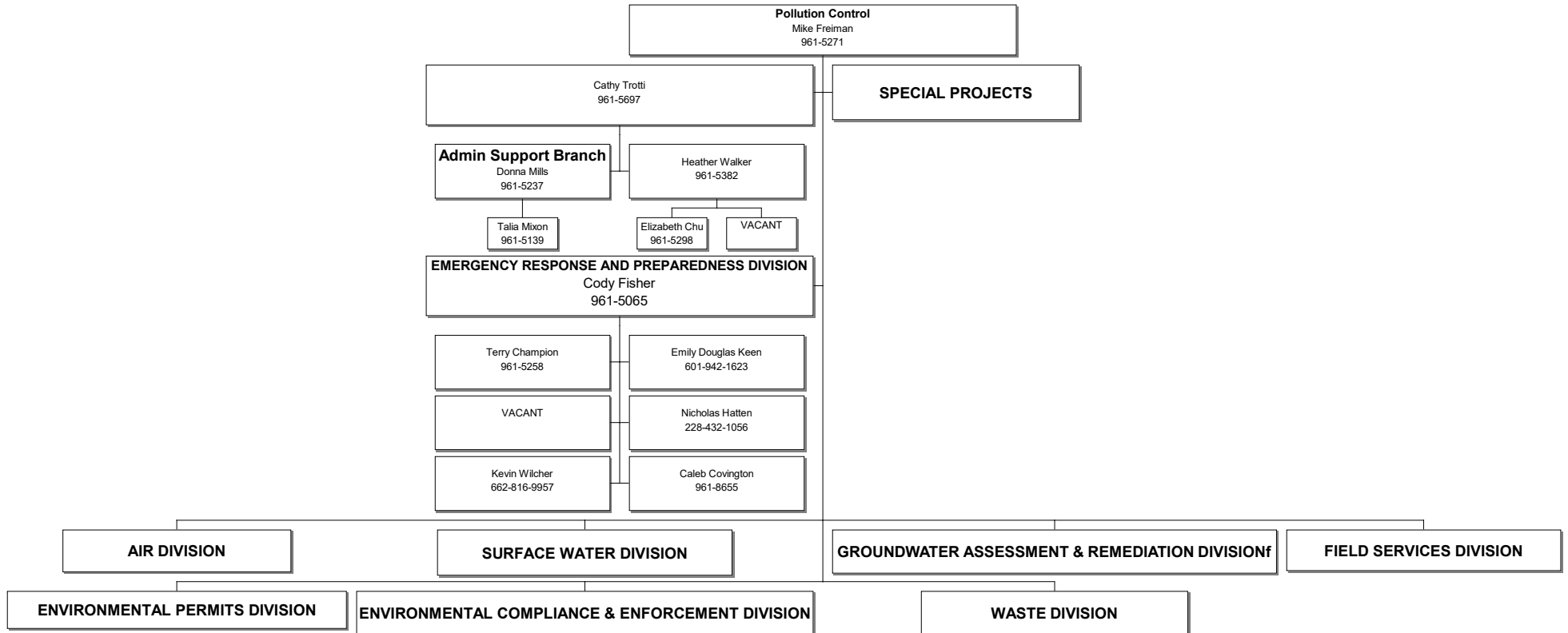
**MISSISSIPPI DEPARTMENT OF ENVIRONMENTAL QUALITY**

**EXECUTIVE DIRECTOR'S OFFICE**

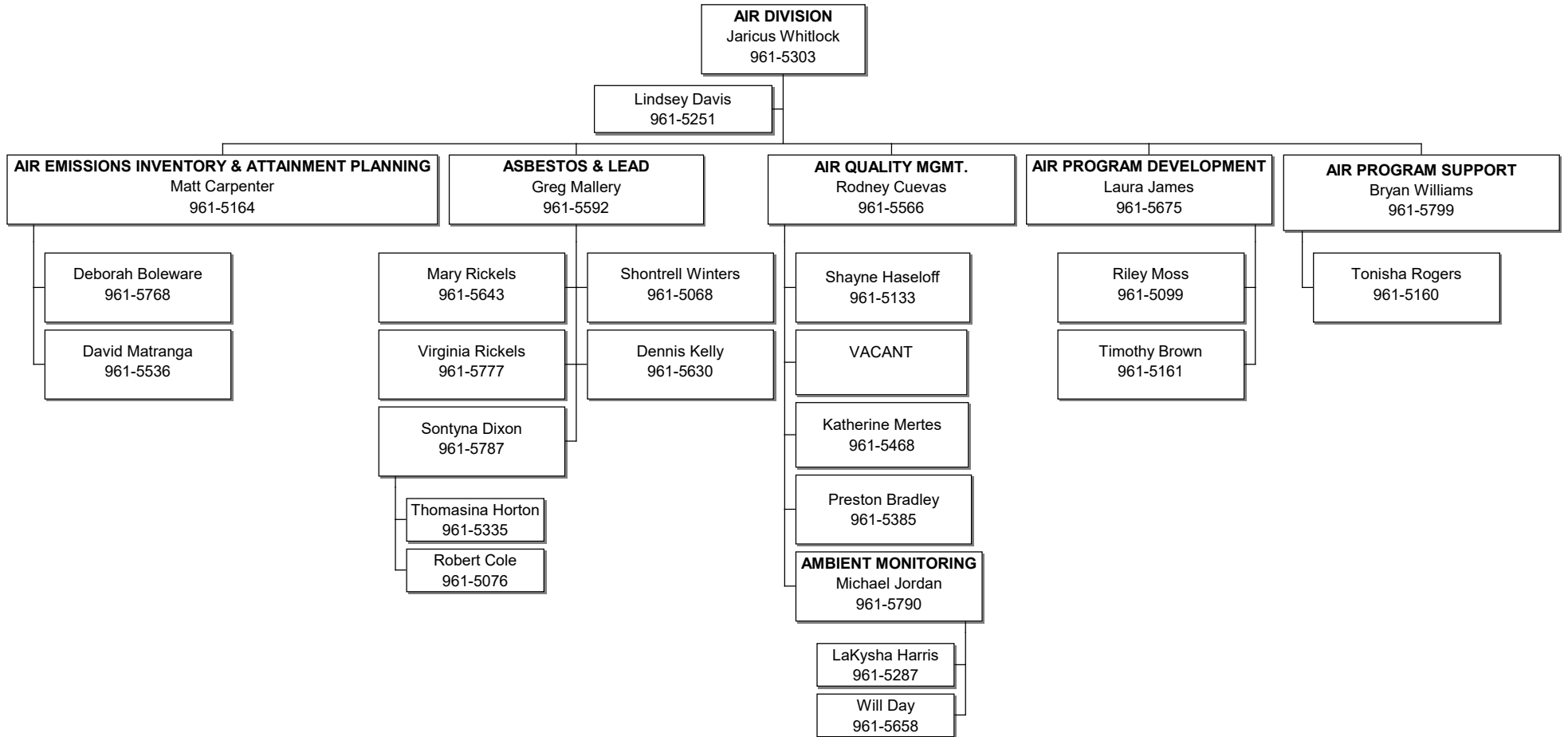
**Office of Community Engagement**

**Page 3**





MISSISSIPPI DEPARTMENT OF ENVIRONMENTAL QUALITY  
OFFICE OF POLLUTION CONTROL  
Air Division  
Page 2

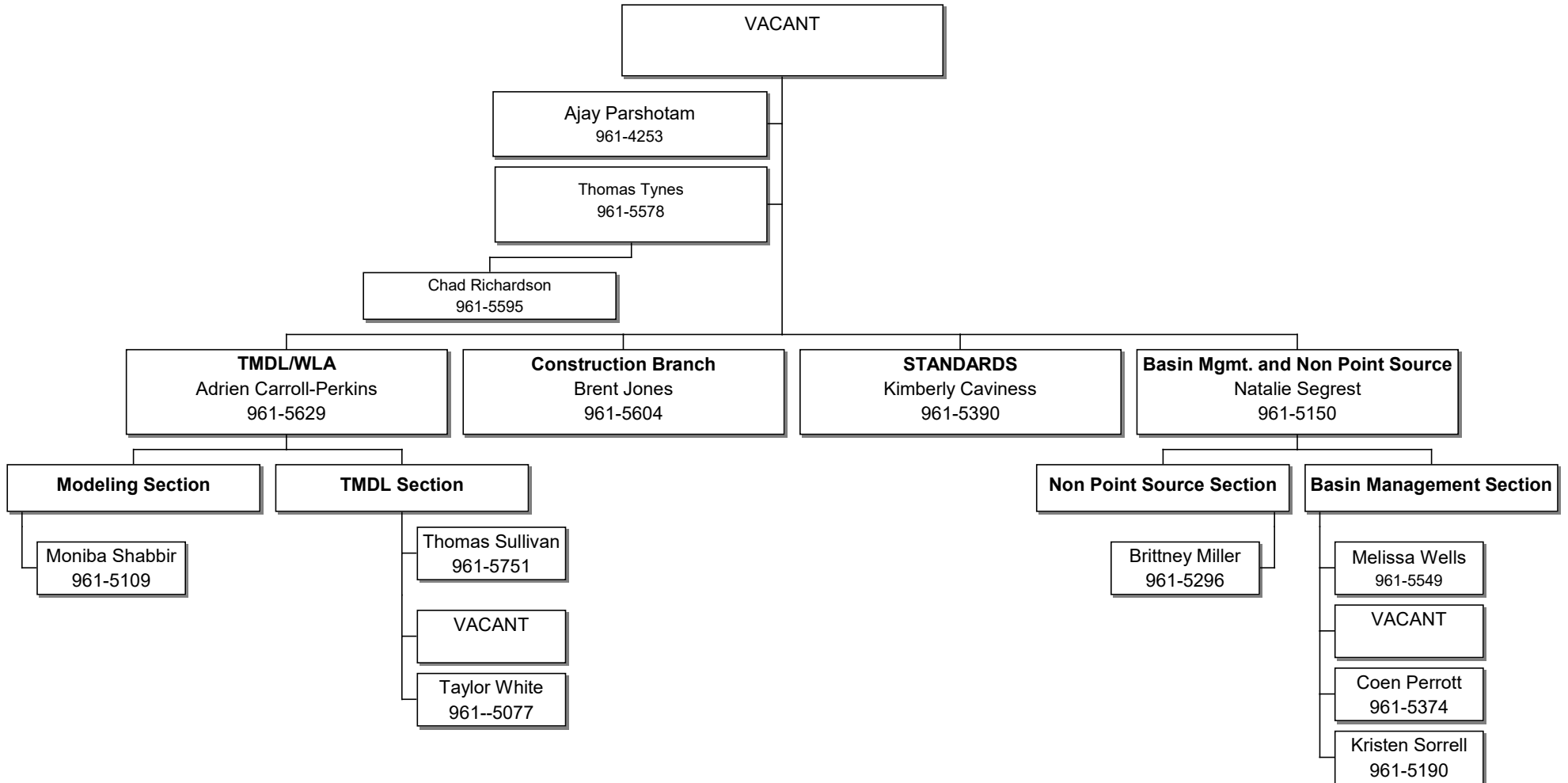




MISSISSIPPI DEPARTMENT OF ENVIRONMENTAL QUALITY  
OFFICE OF POLLUTION CONTROL

Surface Water Division

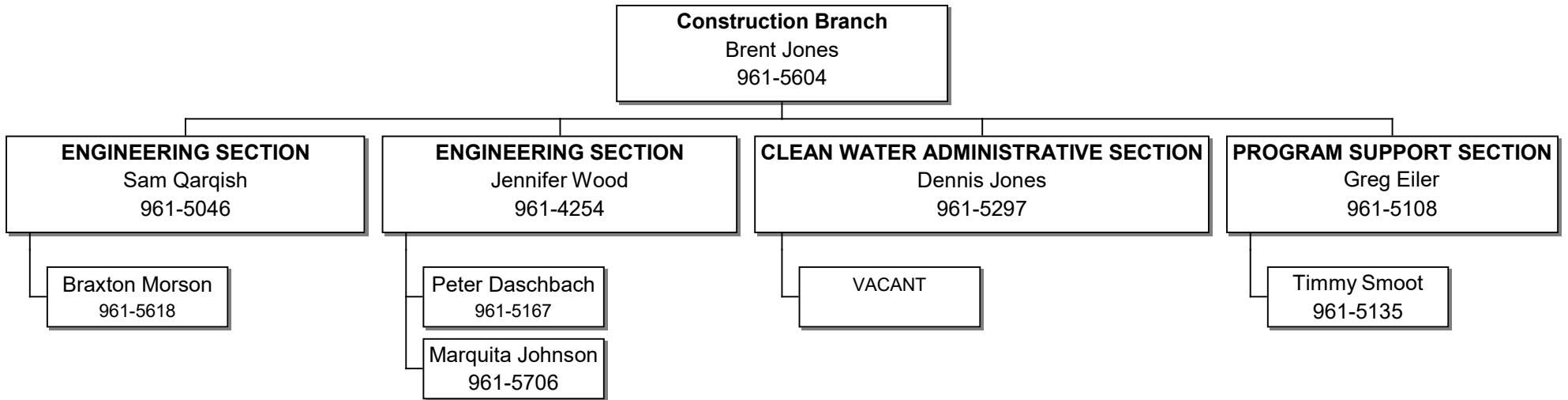
Page 3



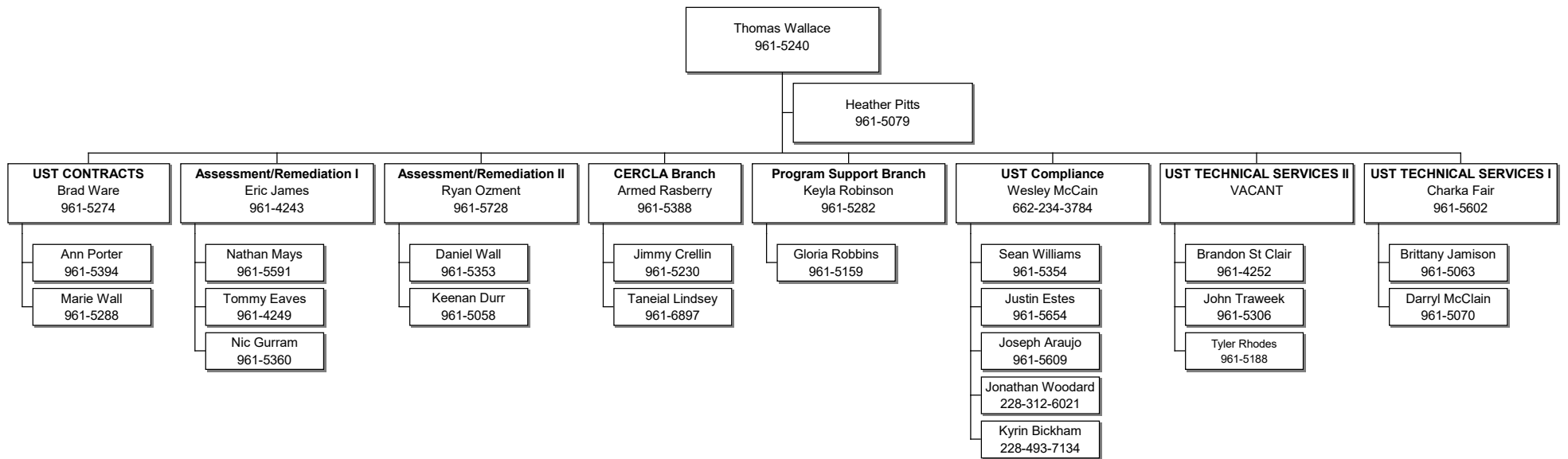
MISSISSIPPI DEPARTMENT OF ENVIRONMENTAL QUALITY  
OFFICE OF POLLUTION CONTROL

SW - Construction Branch

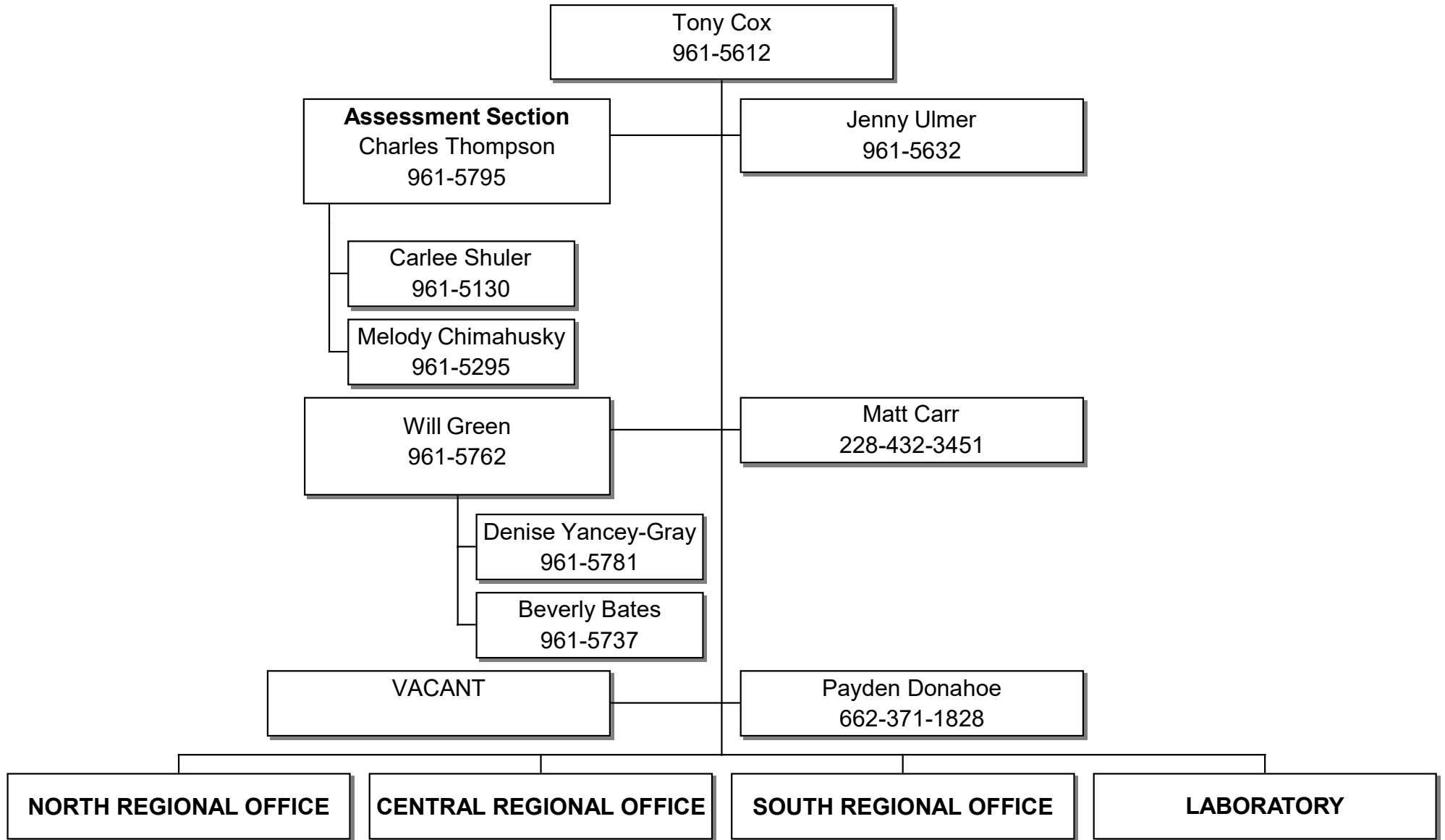
Page 4



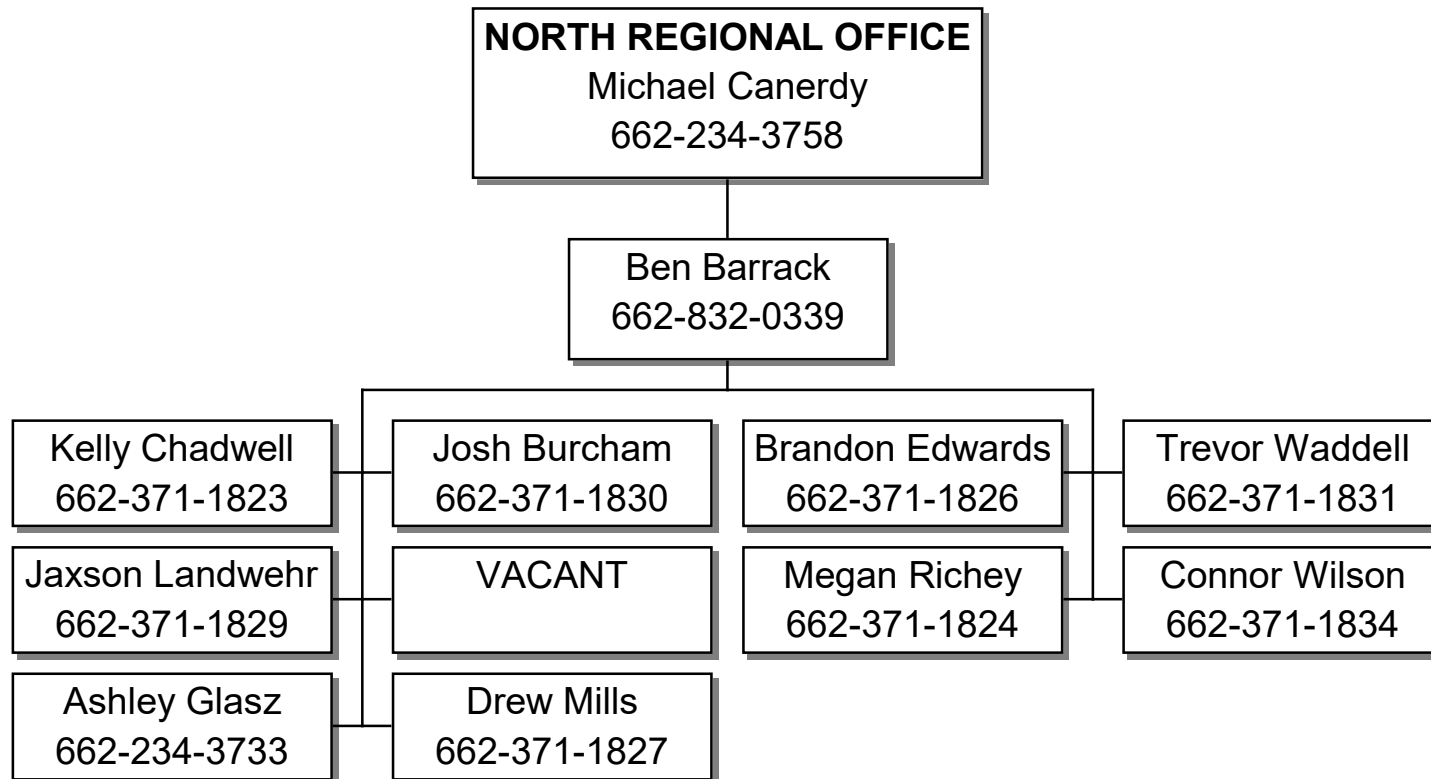
MISSISSIPPI DEPARTMENT OF ENVIRONMENTAL QUALITY  
OFFICE OF POLLUTION CONTROL  
Groundwater Assessment and Remediation Division  
Page 5



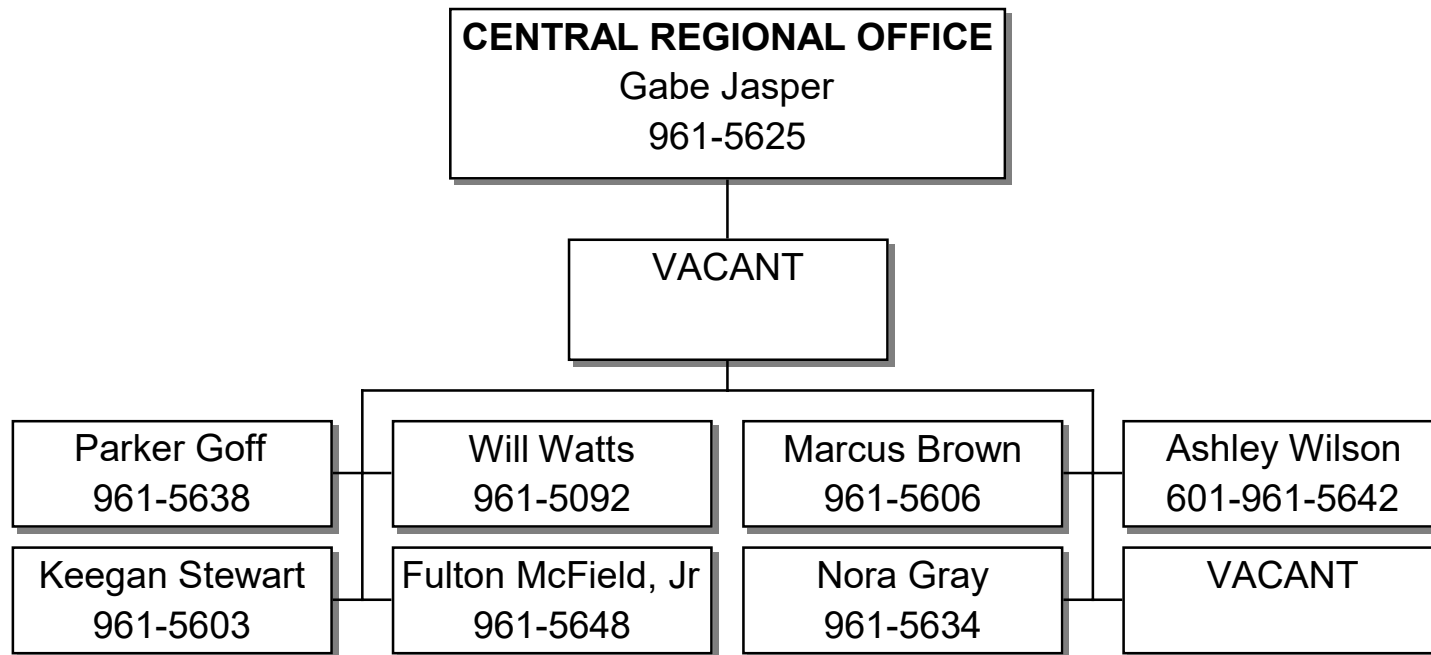
MISSISSIPPI DEPARTMENT OF ENVIRONMENTAL QUALITY  
OFFICE OF POLLUTION CONTROL  
Field Services Division  
Page 6



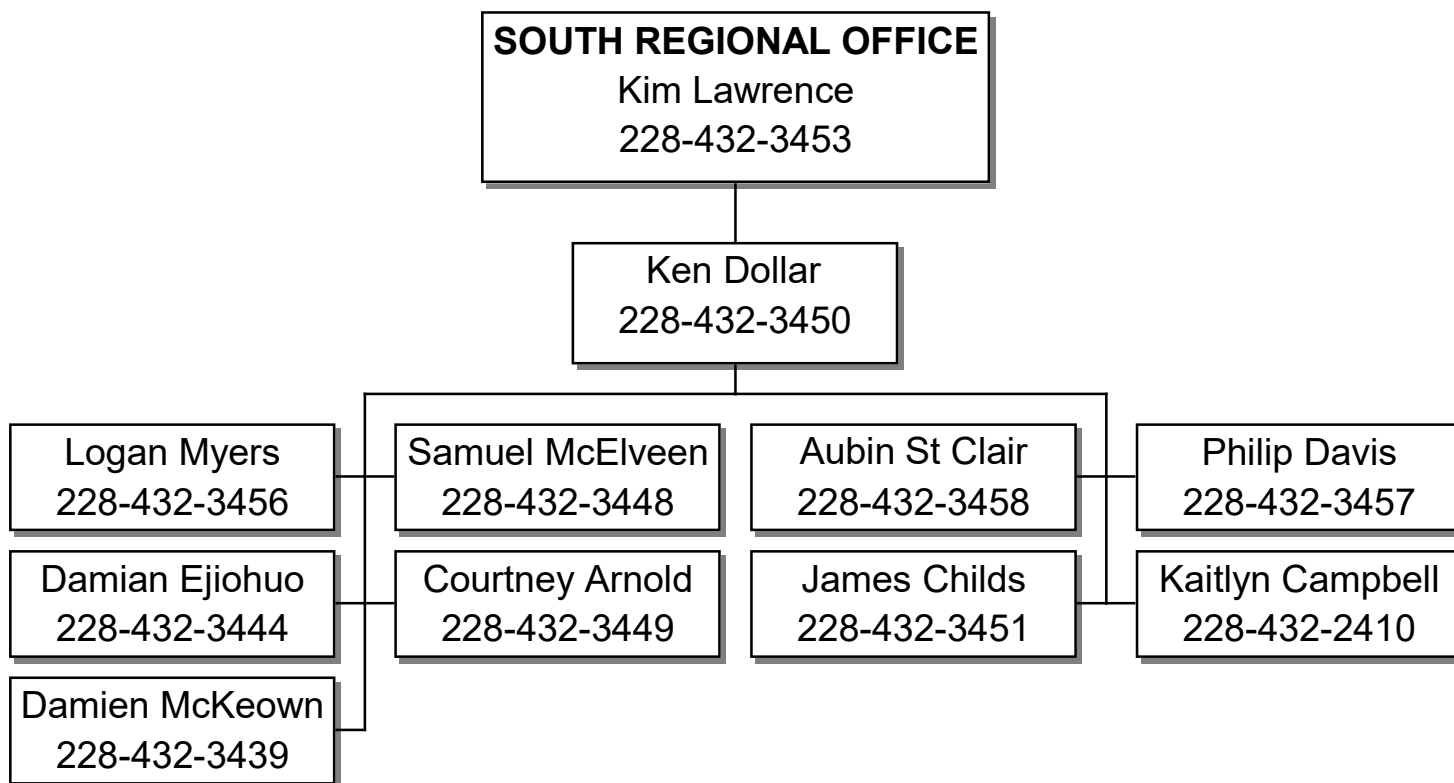
**MISSISSIPPI DEPARTMENT OF ENVIRONMENTAL QUALITY**  
**OFFICE OF POLLUTION CONTROL**  
**Cont. Field Services Division**  
**Page 7**



**MISSISSIPPI DEPARTMENT OF ENVIRONMENTAL QUALITY**  
**OFFICE OF POLLUTION CONTROL**  
**Cont. Field Services Division**  
**Page 8**



**MISSISSIPPI DEPARTMENT OF ENVIRONMENTAL QUALITY**  
**OFFICE OF POLLUTION CONTROL**  
**Cont. Field Services Division**  
**Page 9**



MISSISSIPPI DEPARTMENT OF ENVIRONMENTAL QUALITY  
OFFICE OF POLLUTION CONTROL  
Cont. Field Services Division  
Page 10

**LABORATORY**  
Erica Scarbrough  
961-5710

Tammy Sawyer  
961-5776

Amy Gray  
961-5712

Matthew Maples  
662-237-1827

VACANT

**Wet Chem/Micro**  
Allison Messemore  
961-5723

**Air/Metals**  
Matt Pyles  
961-5689

**Organics**  
VACANT

**Surface Water Monitoring**  
Alice Dossett  
961-5664

**Coastal Monitoring (SRO)**  
Emily Cotton  
228-432-3447

Josh Frilot  
961-5585

Christian Hurst  
961-5156

Molly Shook  
961-5724

(NRO)  
Clay Phillips  
662-371-1833

Kate Doering  
228-432-0231

Gwen McDuffie  
961-5735

Megan Hansen  
961-5264

Elena Woodard  
961-5780

Whaan Giafaglione  
228-432-0228

Madilyn Thomas  
961-5585

Jessica Lowery  
961-5617

Jennifer Ahlbrand  
228-432-0227

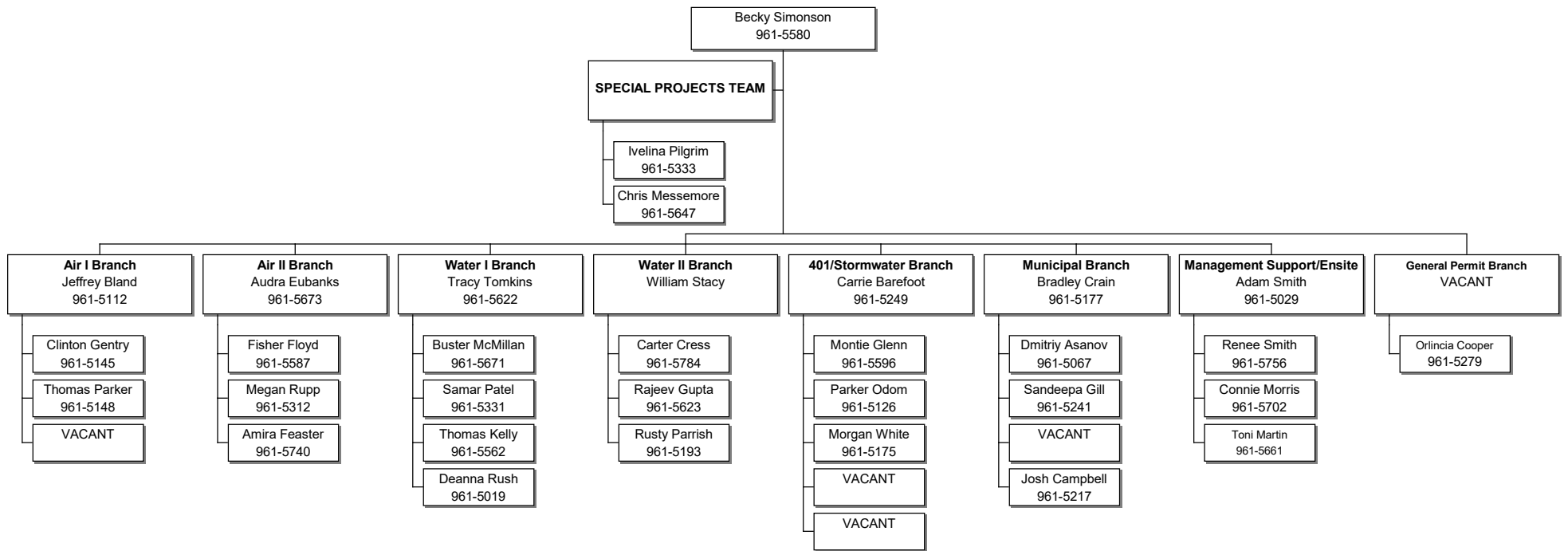
Andrew Henke  
961-5639

Jordan Brown  
228-432-0229

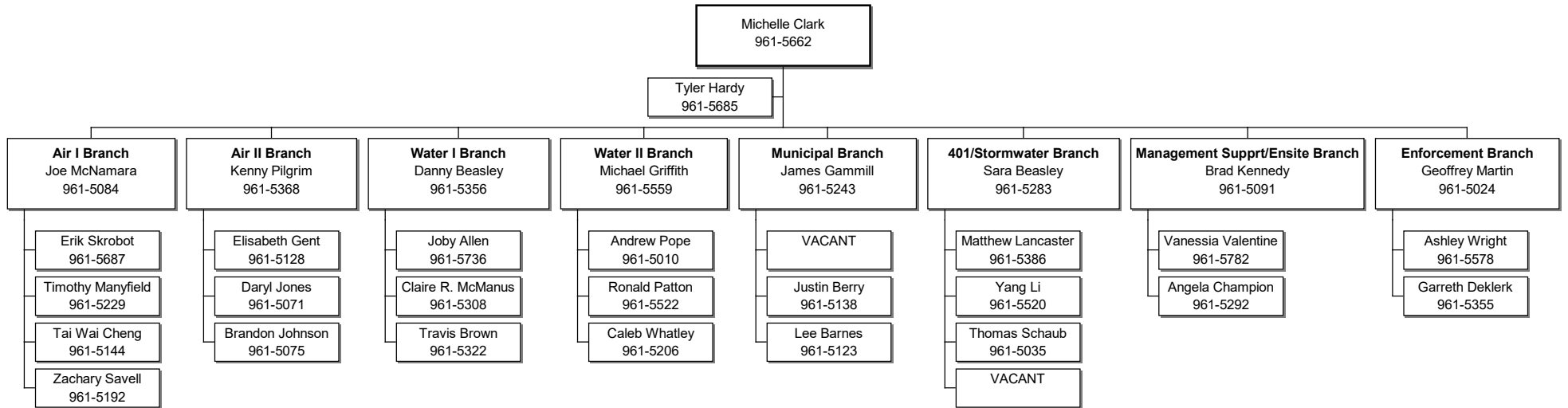
Wyatt Dunaway  
228-236-4688



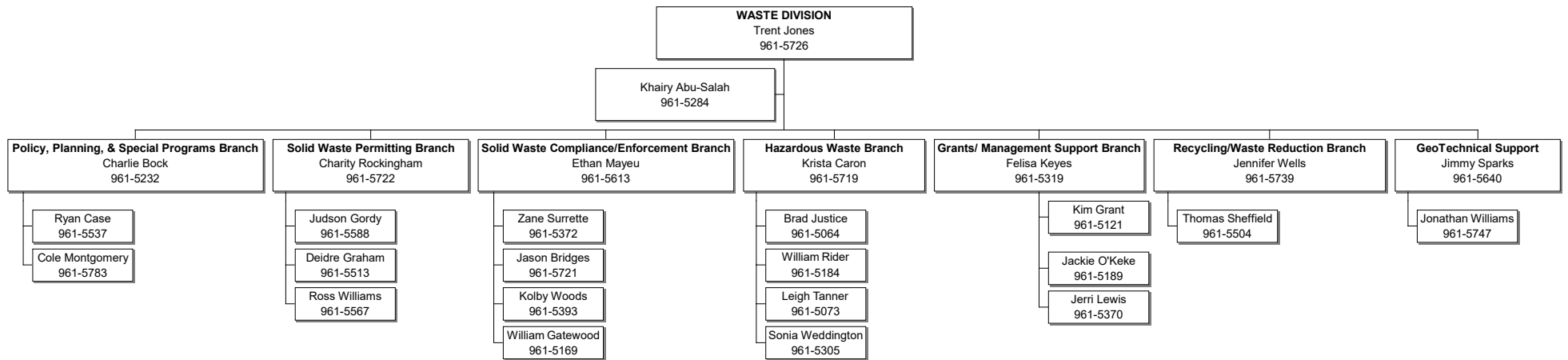
MISSISSIPPI DEPARTMENT OF ENVIRONMENTAL QUALITY  
OFFICE OF POLLUTION CONTROL  
Environmental Permit Division  
Page 11



MISSISSIPPI DEPARTMENT OF ENVIRONMENTAL QUALITY  
OFFICE OF POLLUTION CONTROL  
Environmental Compliance and Enforcement Division  
Page 12

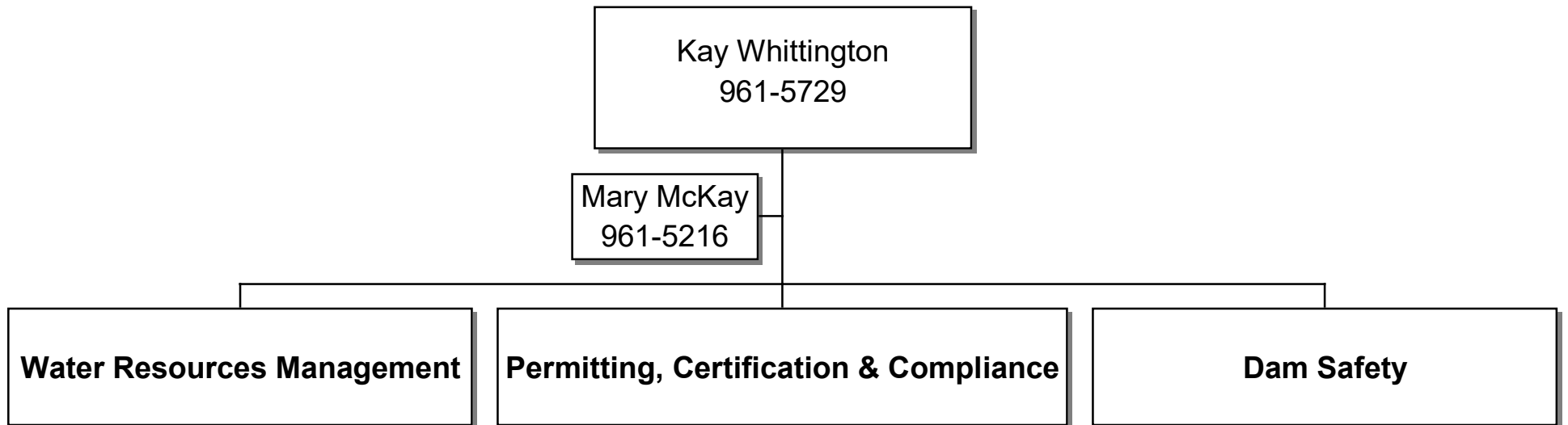


MISSISSIPPI DEPARTMENT OF ENVIRONMENTAL QUALITY  
OFFICE OF POLLUTION CONTROL  
Waste Division  
Page 13



**MISSISSIPPI DEPARTMENT OF ENVIRONMENTAL QUALITY**  
**Office of Land and Water Resources**

**Page 1**

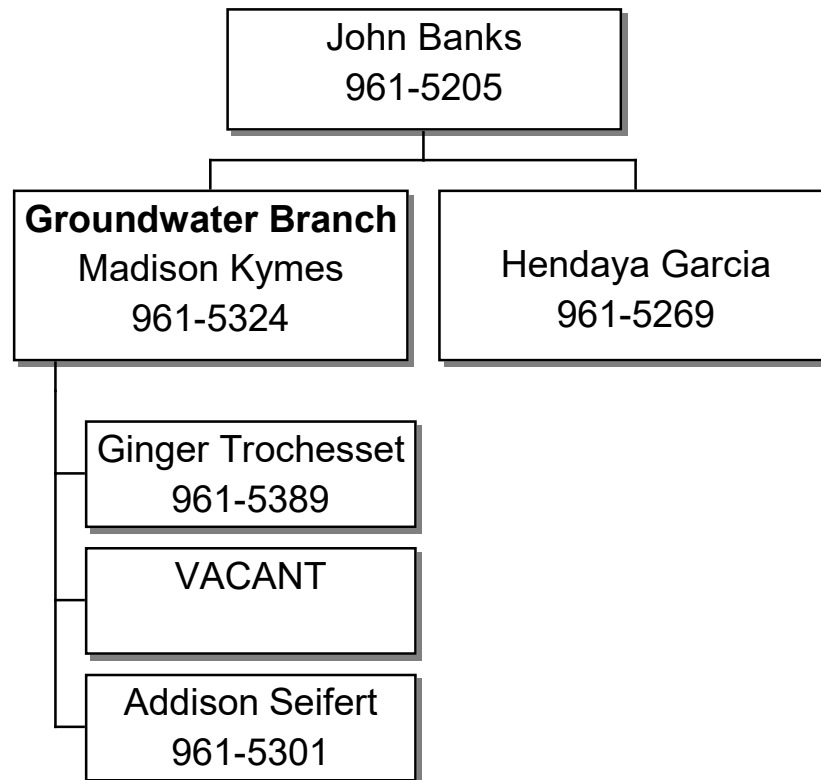


# MISSISSIPPI DEPARTMENT OF ENVIRONMENTAL QUALITY

OFFICE OF LAND AND WATER RESOURCES

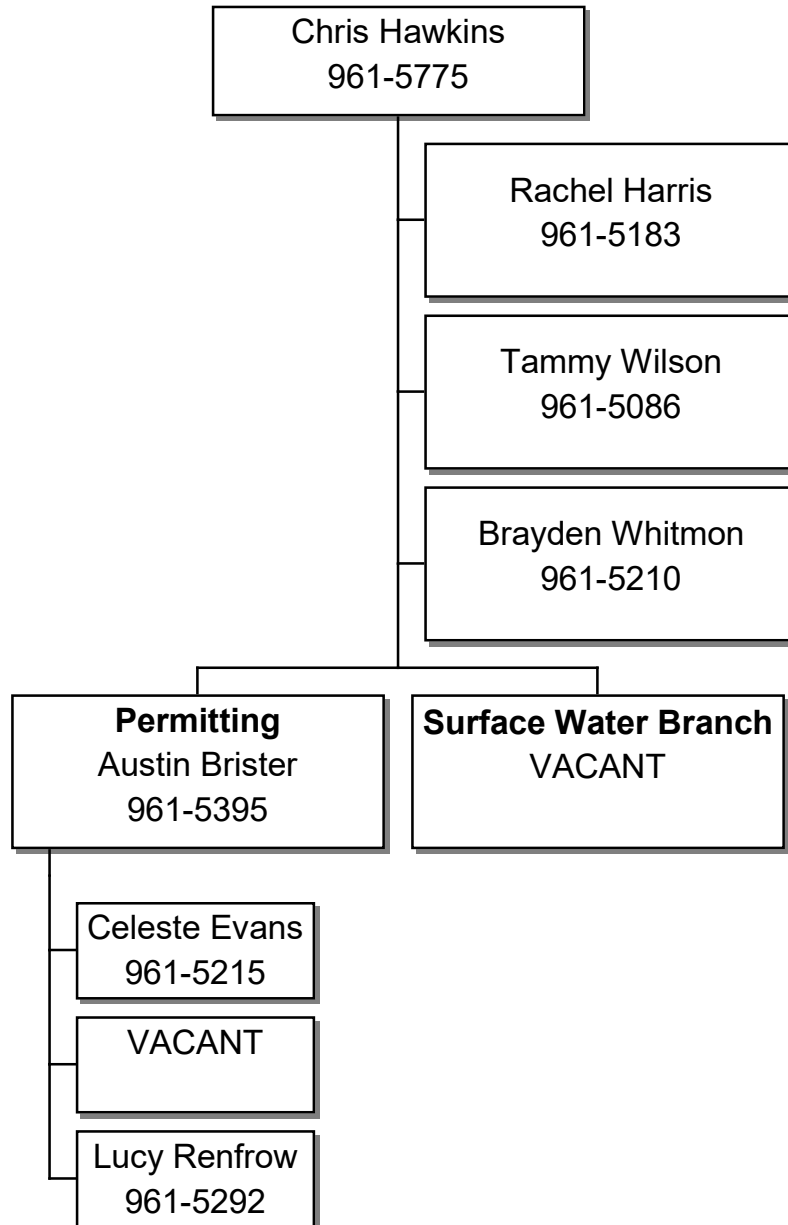
Water Resources Management

Page 2



# MISSISSIPPI DEPARTMENT OF ENVIRONMENTAL QUALITY

OFFICE OF LAND AND WATER RESOURCES  
Permitting, Certification & Compliance Division  
Page 3

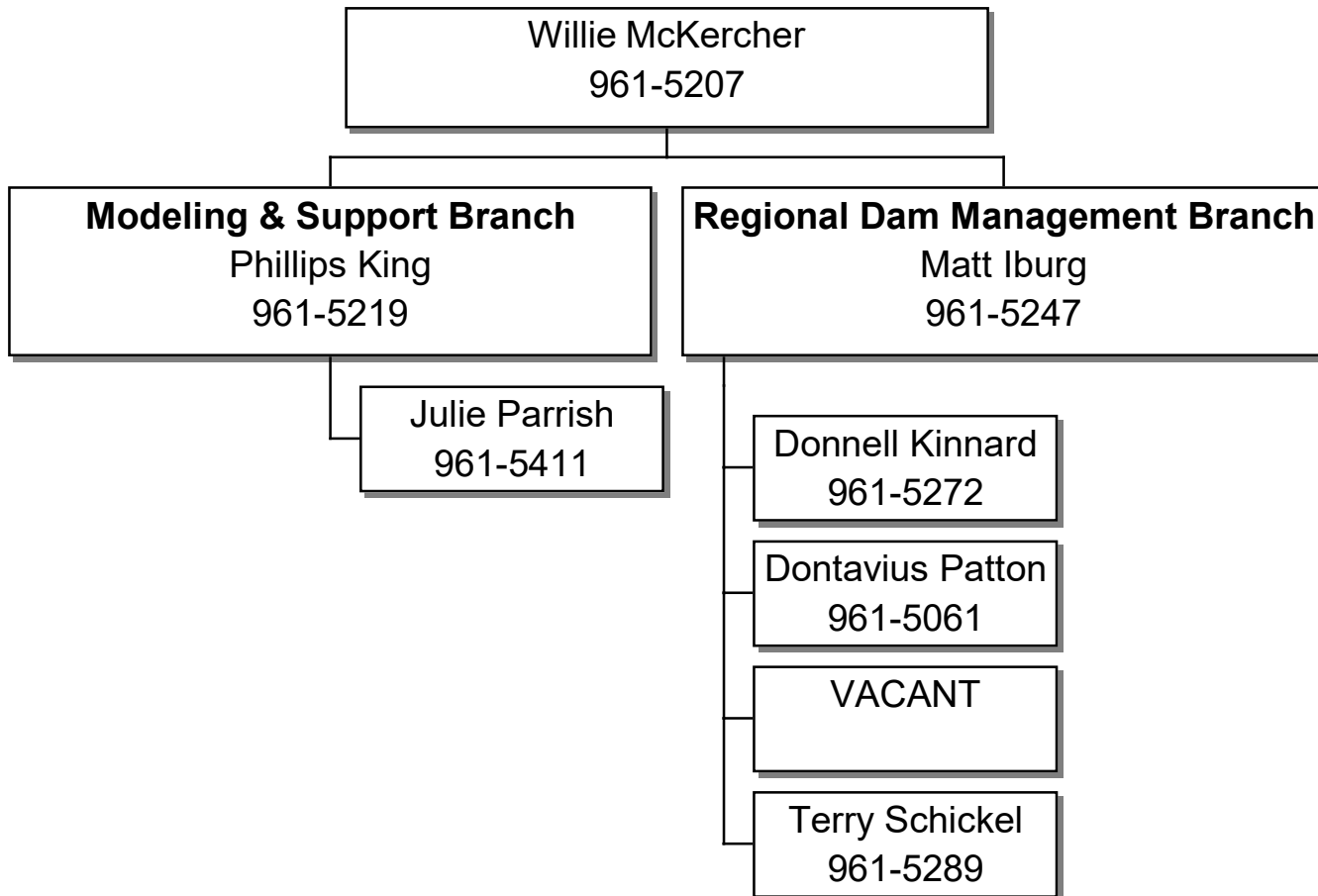


# MISSISSIPPI DEPARTMENT OF ENVIRONMENTAL QUALITY

OFFICE OF LAND AND WATER RESOURCES

Licensing and Dam Safety Division

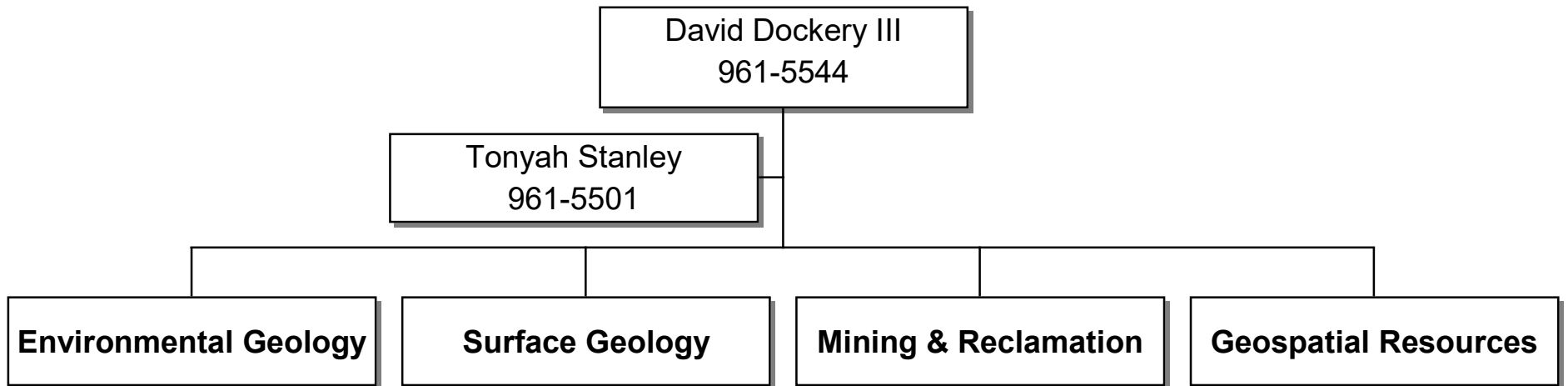
Page 4



**MISSISSIPPI DEPARTMENT OF ENVIRONMENTAL QUALITY**

**Office of Geology**

**Page 1**



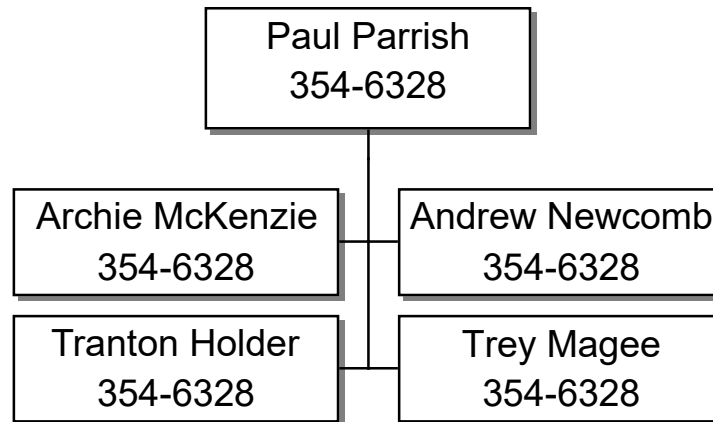


# MISSISSIPPI DEPARTMENT OF ENVIRONMENTAL QUALITY

OFFICE OF GEOLOGY

Environmental Geology

Page 2

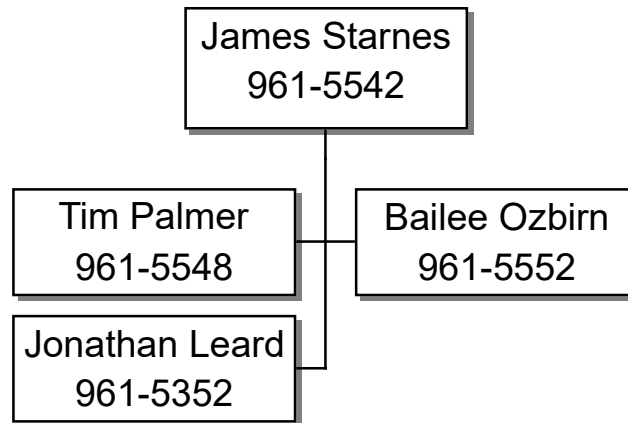


# MISSISSIPPI DEPARTMENT OF ENVIRONMENTAL QUALITY

OFFICE OF GEOLOGY

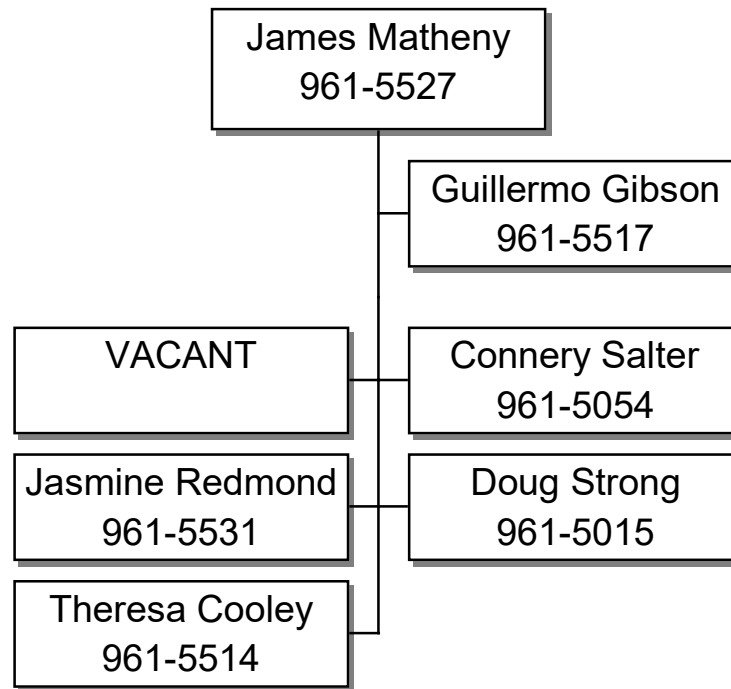
Surface Geology

Page 3



# MISSISSIPPI DEPARTMENT OF ENVIRONMENTAL QUALITY

OFFICE OF GEOLOGY  
Mining and Reclamation  
Page 4



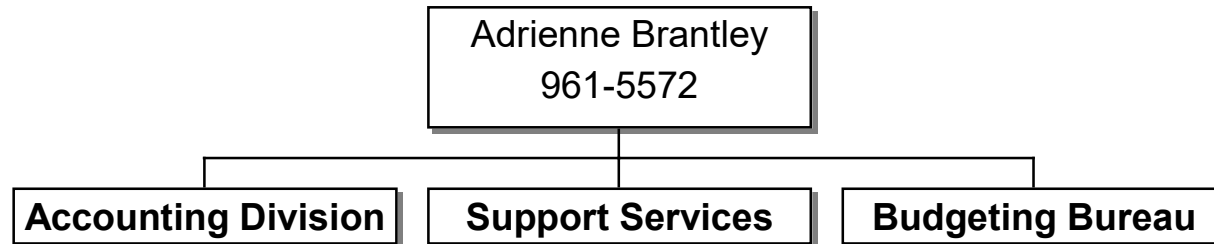
**MISSISSIPPI DEPARTMENT OF ENVIRONMENTAL QUALITY**

**OFFICE OF GEOLOGY  
Geospatial Resources Division  
Page 5**

Stephen Champlin  
961-5506

**MISSISSIPPI DEPARTMENT OF ENVIRONMENTAL QUALITY**  
**Office of Administrative Services**

**Page 7**

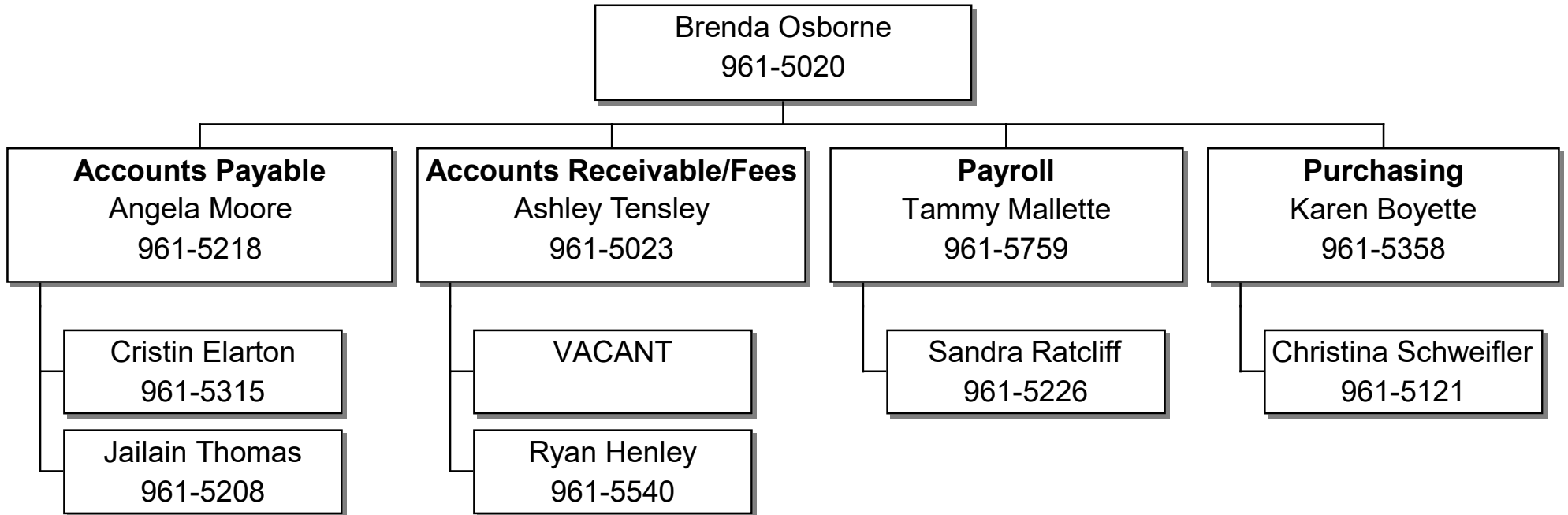


**MISSISSIPPI DEPARTMENT OF ENVIRONMENTAL QUALITY**

**OFFICE OF ADMINISTRATIVE SERVICES**

**Accounting Division**

**Page 8**

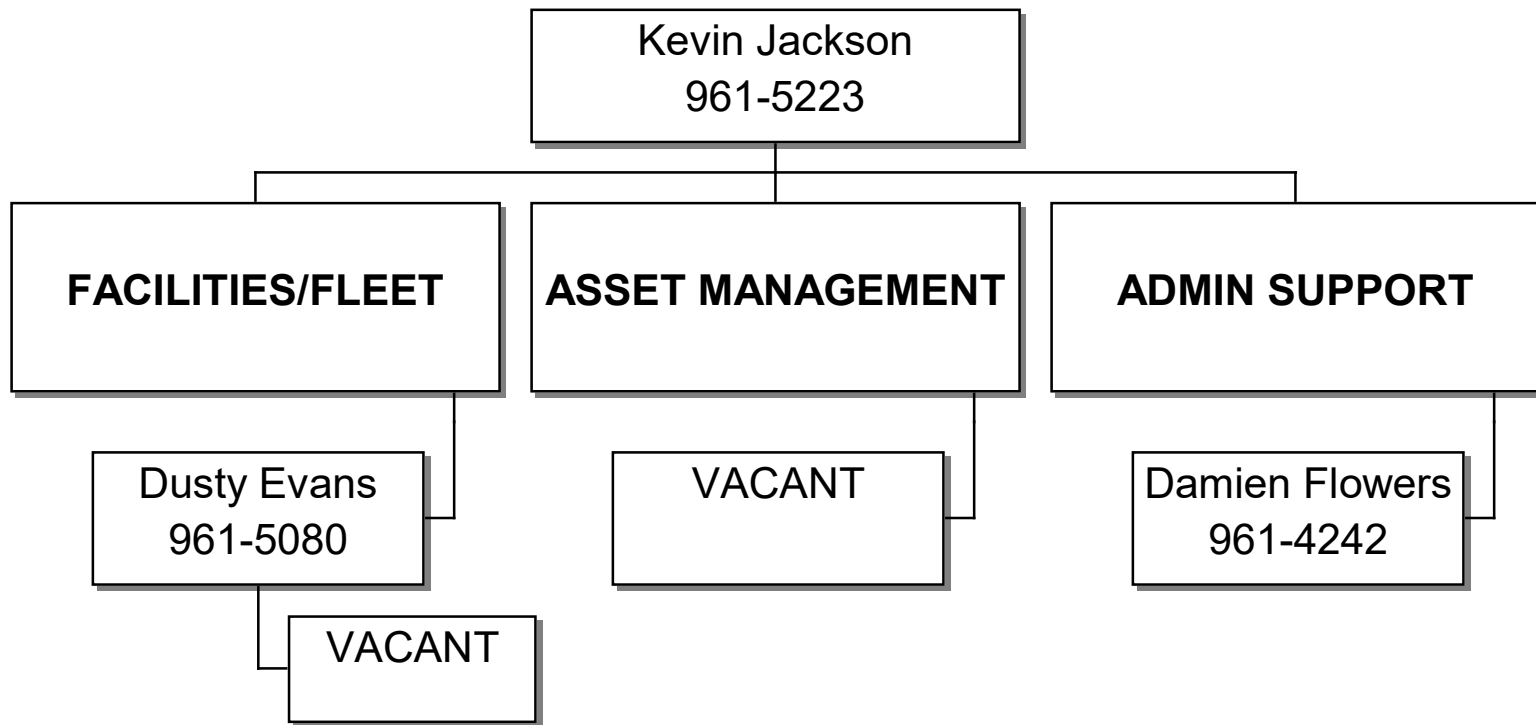


# MISSISSIPPI DEPARTMENT OF ENVIRONMENTAL QUALITY

## OFFICE OF ADMINISTRATIVE SERVICES

### Support Services

Page 9



# MISSISSIPPI DEPARTMENT OF ENVIRONMENTAL QUALITY

OFFICE OF ADMINISTRATIVE SERVICES

Budgeting Bureau

Page 10

