

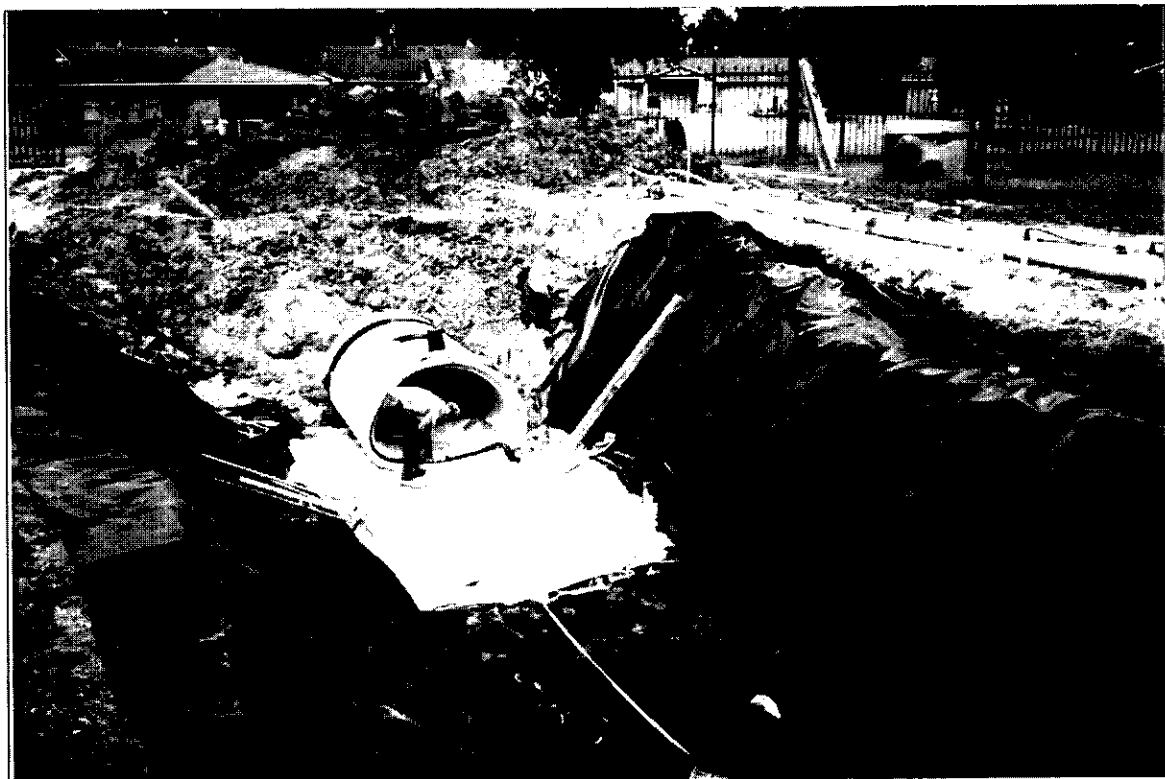
Appendix A

Selected Photographs of Construction Activities

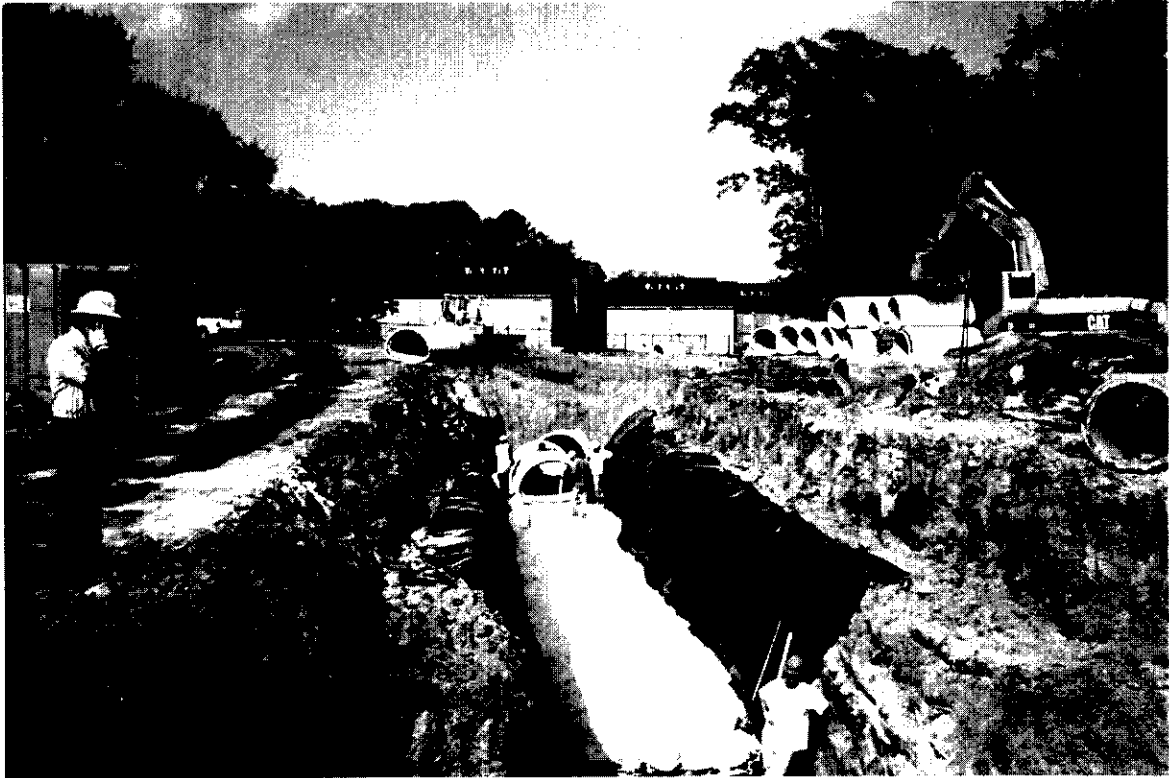
**Northeast Drainage Ditch Removal Action
Hattiesburg, Mississippi**



Shallow dewatering system adjacent to Francis St. Apts.
(facing downstream)



Culvert installation adjacent to Francis St. Apts.
(facing downstream)



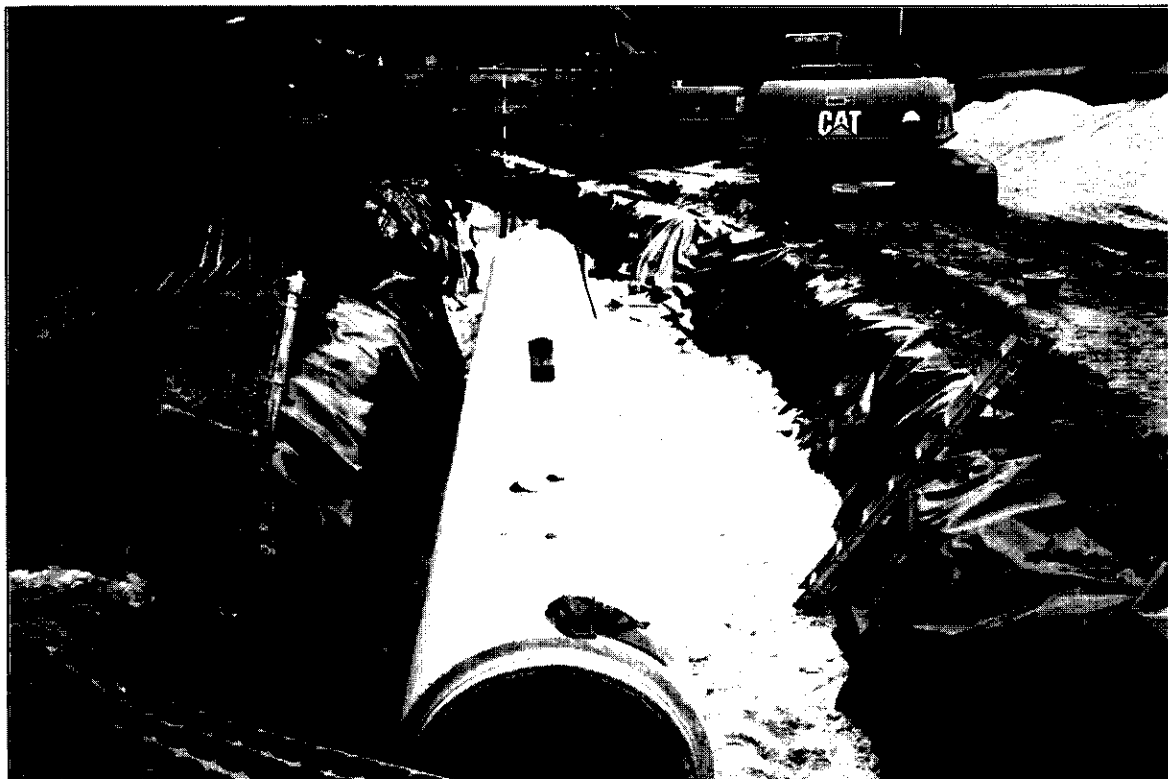
Culvert installation upstream of Francis St. Apts.
(facing downstream)



Completed project upstream of Francis St. Apts.
(facing downstream)



Trench excavation upstream of MLK Ave.
(facing upstream)



Culvert installation upstream of MLK Ave.
(facing upstream)



Culvert installation downstream of Francis St.
(facing upstream)



Trench excavation crossing Francis St.
(facing upstream)



Unremediated ditch between Harrell St. and Florence St.
(facing upstream)



Culvert installation between Harrell St. and Florence St.
(facing upstream)



Completed project between Harrell St. and Florence St.
(facing downstream)



Unremediated ditch between Florence St. and Scooba St.
(facing upstream)



Culvert installation between Florence St. and Scooba St.
(facing upstream)



Completed project between Florence St. and Scooba St.
(facing upstream)