

CD-25' ← Top
2.12'
1.0'
0.9'



D-25' ←

TOP

E-121
4-2
0-41





A-0/4'WNW ←

0-12
4-8
0-4



A-25 (7'W) ←
2-11
1-8
0-9



A-50' ← TOP
8-10"
9-8"
0-4"



P-25
100

P-38
100
8-12



B-25'

← TOP

4.8'
0.41



B-50' ← TOP

B-10'
4-B'
0-4'



C-10 ← Top

8-12'
1-8'
0-4'



C-25'

← TOP

0-41'



52-90
8-12
9-0
0-4

2-38 ← TOP
8-12
9-0
0-4



If you have any additional questions,
please contact:

TONY RUSSELL

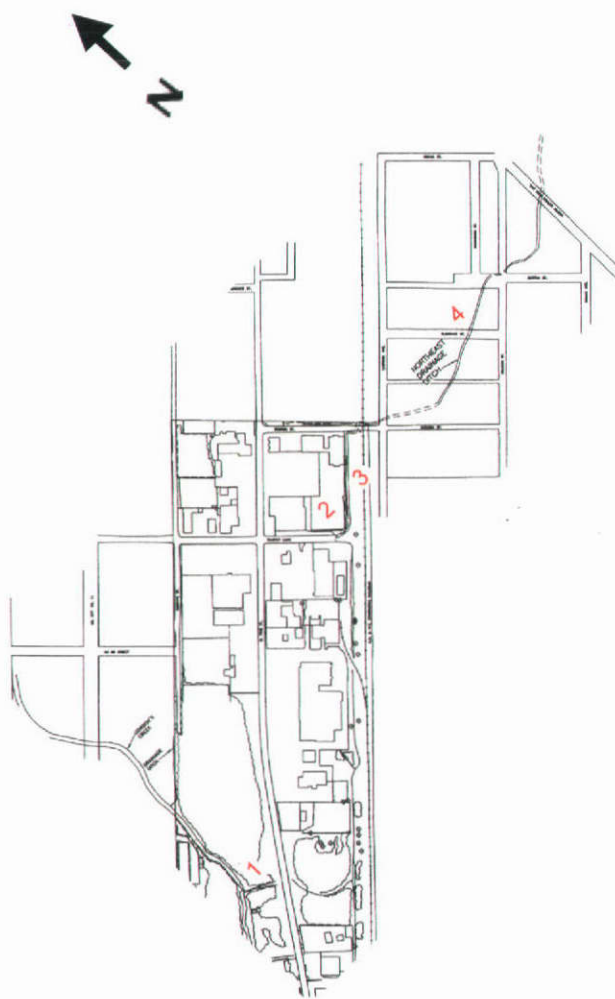
Mississippi Department of Environmental Quality
Uncontrolled Sites Section
(601)961-5318

GLORIA TATUM

Mississippi Department of Environmental Quality
Field Services Division
(601)961-5011

KELLY RILEY

Mississippi Department of Environmental Quality
Legal Division
(601)961-5369



Mississippi Department of **ENVIRONMENTAL QUALITY**

**PROPOSED
CLEANUP PLANS**
*for the former Gulf
States Creosote
site in Hattiesburg*

november 2002

MDEQ strives to preserve
and protect Mississippi's air,
land, and water through fair
and responsible regulation.



P.O. Box 10385
Jackson, MS 39289
www.deq.state.ms.us

The Mississippi Department of Environmental Quality (MDEQ) is publishing this notice to inform the citizens of Hattiesburg and the surrounding area about the proposed cleanup of the former creosote plant located in and around Courtesy Motors on West Pine Street.

The former creosote plant operated from the early 1900's to approximately 1960. Since the plant operated prior to the creation of MDEQ, the agency never regulated this site. In 1962, the site was redeveloped for commercial and light industrial use.

Location #1: (see map on back)

Former Fill Area (between West Pine St. & Gordon's Creek)
Proposed Cleanup: Install sheet-piling wall along the creek bank to eliminate seepage into the creek, install monitoring and recovery wells along the wall to monitor and recover any free product that may collect, install concrete culvert from West Pine Street to Creek, cover the area with a liner, and plant trees to prevent mounding of groundwater along the sheet-piling wall.

Location #2: (see map on back)

Former Process Area (between Scooba St. & Timothy Ln)
Proposed Cleanup: Remove creosote contaminated soil from the wooden substructure and the concrete sump area, backfill with compacted clay fill material, regrade the surface and cap the area with a liner and asphalt.

Location #3: (see map on back)

Southern Railroad Track Area
Proposed Cleanup: Remove creosote contaminated sediment and soils from within and beneath the drainage ditch. Depending on the effects of the integrity of the railroad tracks, the soils will either be capped in place or removed.

Location #4: (see map on back)

Northeast Ditch from Scooba Street to Katie Street
Proposed Cleanup: Remove contaminated sediment and soils, install a liner and sand bed in the ditch, install culvert and surface drains, and then backfill around culverts with clean soil.

In an effort to address some of your concerns, MDEQ has listed answers to the most frequently asked questions about the proposed cleanup. If you have any other questions, please contact Tony Russell at (601) 961-5318.

Question 1. Has the City's drinking water been contaminated by creosote or other wood treating chemicals?

No. There is no threat to the City of Hattiesburg's drinking water supply, but MDEQ will require monitoring on a semi-annual basis for two years to watch for any possible migration of groundwater contamination. After two years, the monitoring will be performed on an annual basis for an indefinite period of time.

Question 2. Have the citizens or residents in the area been exposed to creosote contamination at the surface?

No. MDEQ is not aware of any direct exposure at this time. The limited amount of contamination that exists is below the surface. Although creosote contamination exists in the drainage ditch that runs from Scooba Street to Katie Street, there is no direct exposure because the contamination has been covered by sediment that has been deposited over time.

Question 3. How does MDEQ know that the shallow groundwater contamination will not impact the City of Hattiesburg's drinking water supply or a private well?
Extensive groundwater monitoring will allow MDEQ to watch the location of the groundwater contamination and ensure that any migration does not threaten drinking water in the area. A private water well search was conducted in October 2000 in the residential area surrounding the site, and no private wells were identified. Also, the City of Hattiesburg has an ordinance that prohibits the drilling of private wells within the city limits.

Question 4. What is the possibility that contamination will continue to migrate in the future?
The remedies proposed should eliminate the possibility for migration in the fill area, process area, and drainage ditch.

Question 5. How long will the remediation take place?

The remedies proposed for the process area and the fill area will be accomplished within one year. The remedy for the northeast drainage ditch may take more than one year due to size of the project and weather conditions.

Question 6. Does MDEQ know if the contaminants have migrated from the site to the soils in the residential yards in the area?

Soil samples have been collected in the residential area, and no contamination was found above the target remediation goal levels established by MDEQ.

Question 7. When the company begins the cleanup of the site, will this create exposure to residents in the area?

No. But there will be odors associated with the removal of contaminated soils from the process area and the Northeast drainage ditch. Citizens will not be exposed to harmful levels of contaminants from the site.

Question 8. What is being done about the creosote in Gordon's Creek?

MDEQ knows there are occasional seepages from the old fill area into Gordon's Creek, but an ecological assessment conducted by the Corp of Engineers indicated that there are no environmental impacts to the creek. A sheet-piling barrier wall will be installed to eliminate further discharges to the creek.

If you have any additional questions,
please contact:

TONY RUSSELL

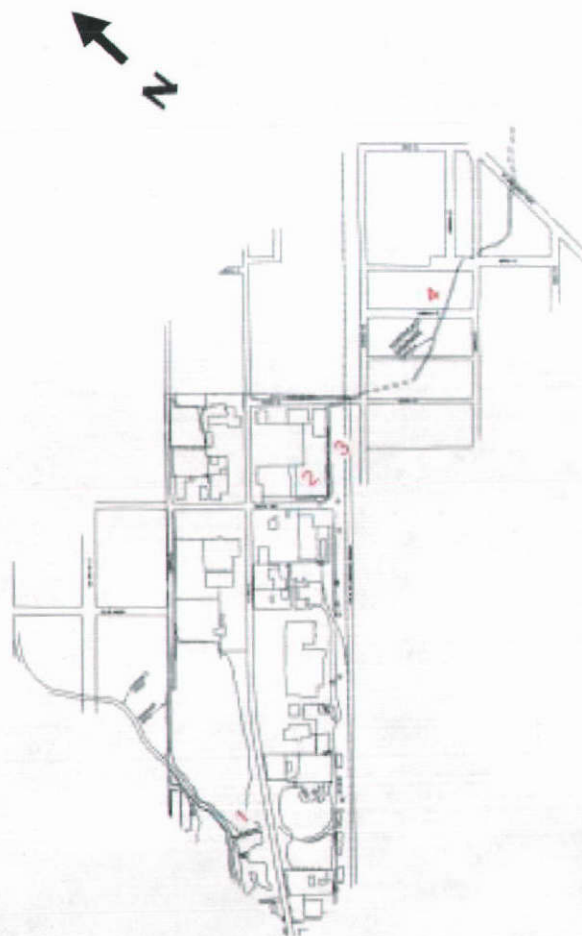
Mississippi Department of Environmental Quality
Uncontrolled Sites Section
(601)961-5318

GLORIA TATUM

Mississippi Department of Environmental Quality
Field Services Division
(601)961-5011

KELLY RILEY

Mississippi Department of Environmental Quality
Legal Division
(601)961-5369



Mississippi Department of ENVIRONMENTAL QUALITY

**PROPOSED
CLEANUP PLANS**
*for the former Gulf
States Creosote
site in Hattiesburg*

november 2002

MDEQ strives to preserve
and protect Mississippi's air,
land, and water through fair
and responsible regulation.



P.O. Box 10385
Jackson, MS 39289
www.deq.state.ms.us

The Mississippi Department of Environmental Quality (MDEQ) is publishing this notice to inform the citizens of Hattiesburg and the surrounding area about the proposed cleanup of the former creosote plant located in and around Courtesy Motors on West Pine Street.

The former creosote plant operated from the early 1900's to approximately 1960. Since the plant operated prior to the creation of MDEQ, the agency never regulated this site. In 1962, the site was redeveloped for commercial and light industrial use.

Location #1: (see map on back)

Former Fill Area (between West Pine St. & Gordon's Creek)

Proposed Cleanup: Install sheet-piling wall along the creek bank to eliminate seepage into the creek, install monitoring and recovery wells along the wall to monitor and recover any free product that may collect, install concrete culvert from West Pine Street to Creek, cover the area with a liner, and plant trees to prevent mounding of groundwater along the sheet-piling wall.

Location #2: (see map on back)

Former Process Area (between Scooba St. & Timothy Ln)

Proposed Cleanup: Remove creosote contaminated soil from the wooden substructure and the concrete sump area, backfill with compacted clay fill material, regrade the surface and cap the area with a liner and asphalt.

Location #3: (see map on back)

Southern Railroad Track Area

Proposed Cleanup: Remove creosote contaminated sediment and soils from within and beneath the drainage ditch. Depending on the effects of the integrity of the railroad tracks, the soils will either be capped in place or removed.

Location #4: (see map on back)

Northeast Ditch from Scooba Street to Katie Street

Proposed Cleanup: Remove contaminated sediment and soils, install a liner and sand bed in the ditch, install culvert and surface drains, and then backfill around culverts with clean soil.

In an effort to address some of your concerns, MDEQ has listed answers to the most frequently asked questions about the proposed cleanup. If you have any other questions, please contact Tony Russell at (601) 961-5318.

Question 1. Has the City's drinking water been contaminated by creosote or other wood treating chemicals?

No. There is no threat to the City of Hattiesburg's drinking water supply, but MDEQ will require monitoring on a semi-annual basis for two years to watch for any possible migration of groundwater contamination. After two years, the monitoring will be performed on an annual basis for an indefinite period of time.

Question 2. Have the citizens or residents in the area been exposed to creosote contamination at the surface?

No. MDEQ is not aware of any direct exposure at this time. The limited amount of contamination that exists is below the surface. Although creosote contamination exists in the drainage ditch that runs from Scooba Street to Katie Street, there is no direct exposure because the contamination has been covered by sediment that has been deposited over time.

Question 3. How does MDEQ know that the shallow groundwater contamination will not impact the City of Hattiesburg's drinking water supply or a private well? Extensive groundwater monitoring will allow MDEQ to watch the location of the groundwater contamination and ensure that any migration does not threaten drinking water in the area. A private water well search was conducted in October 2000 in the residential area surrounding the site, and no private wells were identified. Also, the City of Hattiesburg has an ordinance that prohibits the drilling of private wells within the city limits.

Question 4. What is the possibility that contamination will continue to migrate in the future? *The remedies proposed should eliminate the possibility for migration in the fill area, process area, and drainage ditch.*

Question 5. How long will the remediation take place?

The remedies proposed for the process area and the fill area will be accomplished within one year. The remedy for the northeast drainage ditch may take more than one year due to size of the project and weather conditions.

Question 6. Does MDEQ know if the contaminants have migrated from the site to the soils in the residential yards in the area?

Soil samples have been collected in the residential area, and no contamination was found above the target remediation goal levels established by MDEQ.

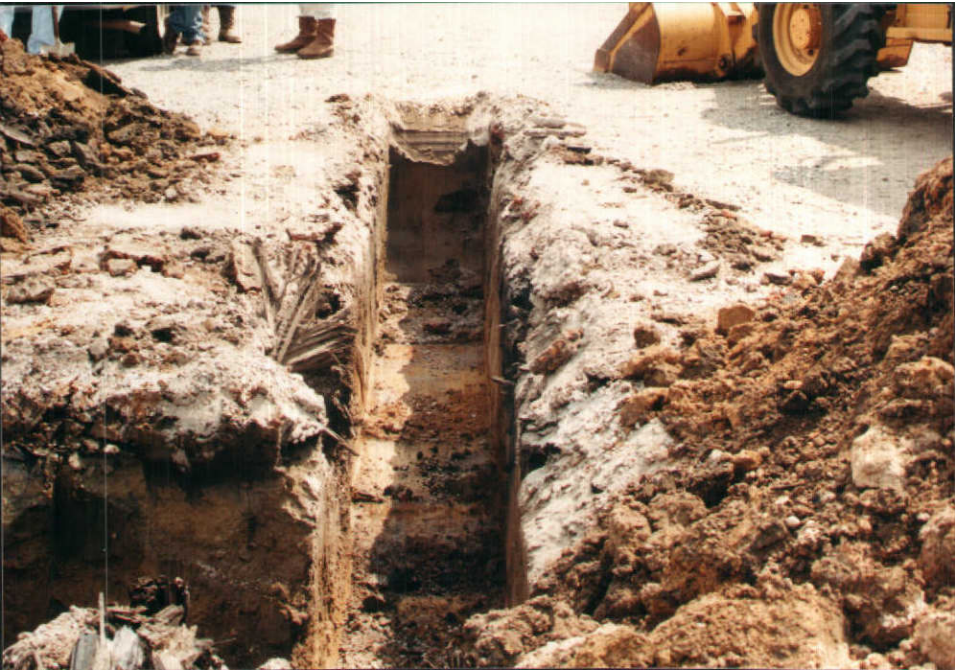
Question 7. When the company begins the cleanup of the site, will this create exposure to residents in the area?

No. But there will be odors associated with the removal of contaminated soils from the process area and the Northeast drainage ditch. Citizens will not be exposed to harmful levels of contaminants from the site.

Question 8. What is being done about the creosote in Gordon's Creek?

MDEQ knows there are occasional seepages from the old fill area into Gordon's Creek, but an ecological assessment conducted by the Corp of Engineers indicated that there are no environmental impacts to the creek. A sheet-piling barrier wall will be installed to eliminate further discharges to the creek.











































A



B



C



D



E



F



G



4



I



J



K



2



M



N



0



A



Q



2



5



T



4



V



w



X



Y



2



α