

Ditch which runs behind
car dealership into Gordon's Creek
8-28-89



Ditch which runs from pine
street to Garder's Creek

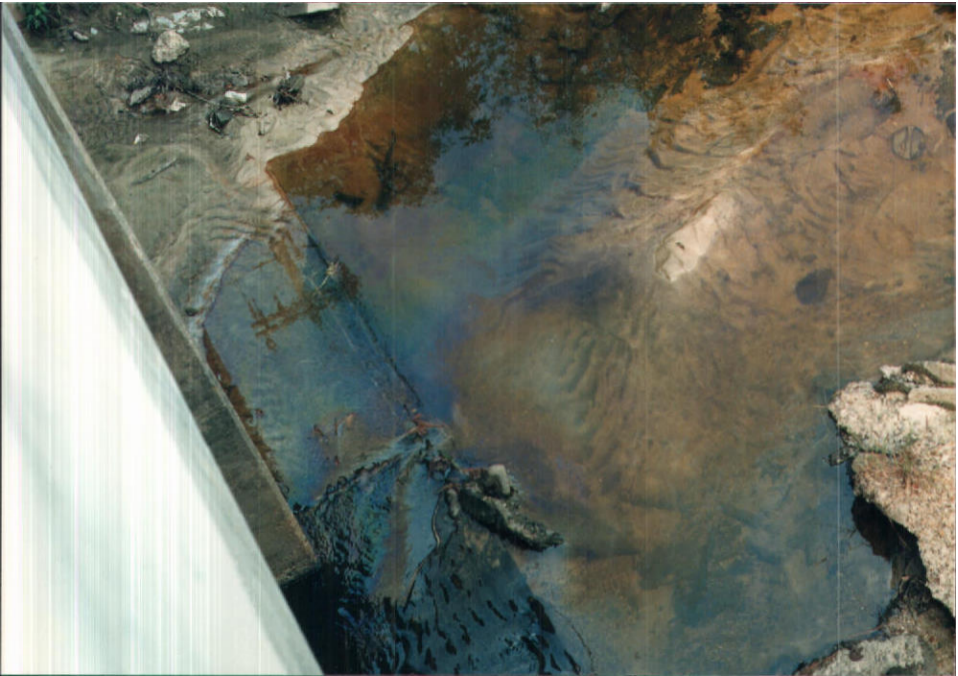
8-28-89



Ditch which runs behind
car dealership and into Gordon's Creek

8-28-89







Confluence of Gordon's Creek 8-28-89
and ditch which runs behind
car dealership

055 036 11 N N N N 2



LOOKING OFF SW SIDE OF BROADWAY

0

0

0

0

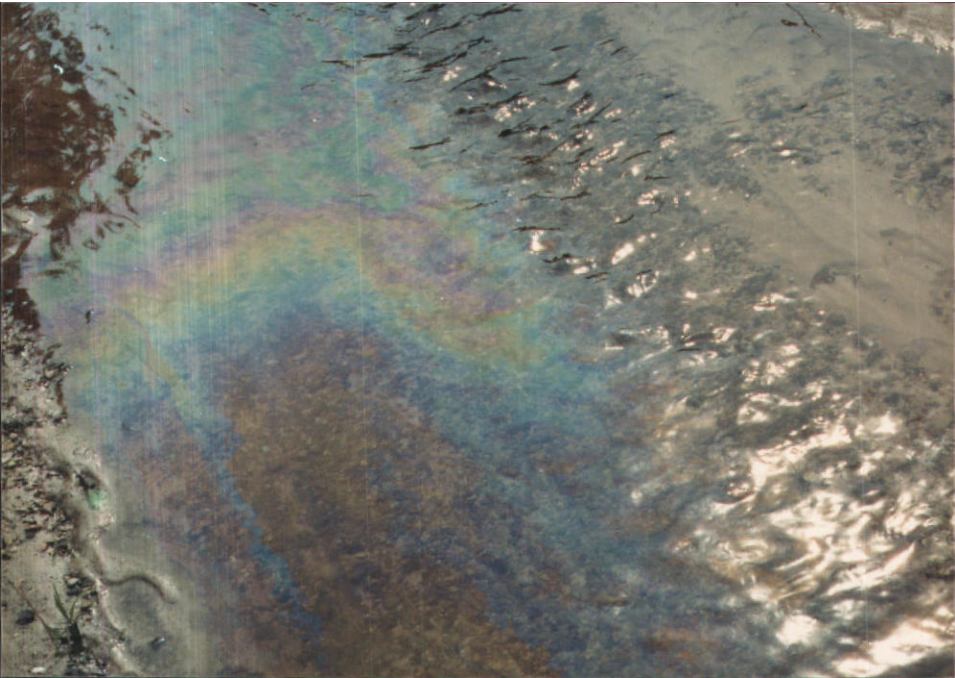
0

0

0

Q55 035 11 N N N N 2

00



Confluence of Gordon's Creek
and ditch which runs
behind car dealership

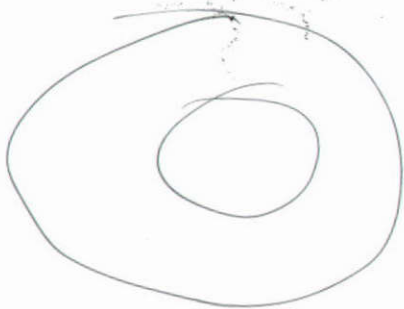
F-28-89

055 036 11 N N N N 2





SAND BAR IN GORDANS CREEK AT AMERICAN CREEKSITE
SITE (Aug '89)

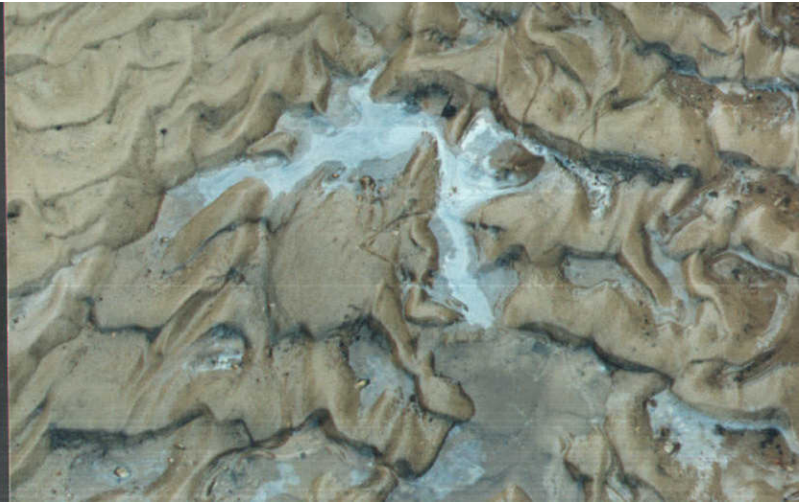


055 036 11 4.1 4.1 2

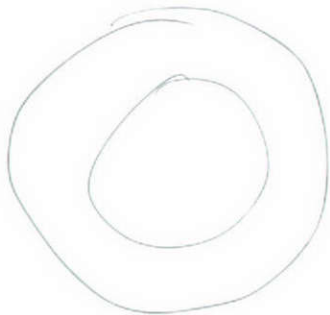








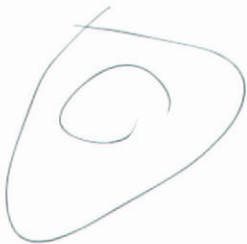
SAND BAR IN GORDANS CREEK AT AMERICAN CREEKOTE
SITE (AUG. '89)







SAND BAR IN GOROONS CREEK AT AMERICAN
CREOSOTE SITE (AUG '89)



055 036 11 N N K K 2













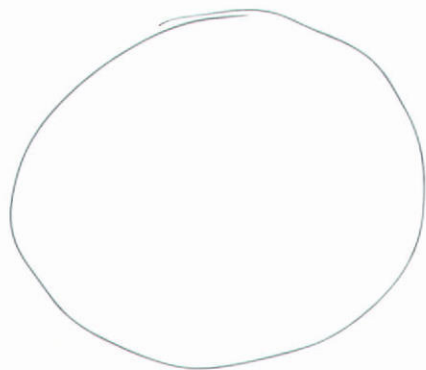






Gordon's Creek looking upstream
towards Hwy 49

8-28-89



055 036 11 N N N N ?



















