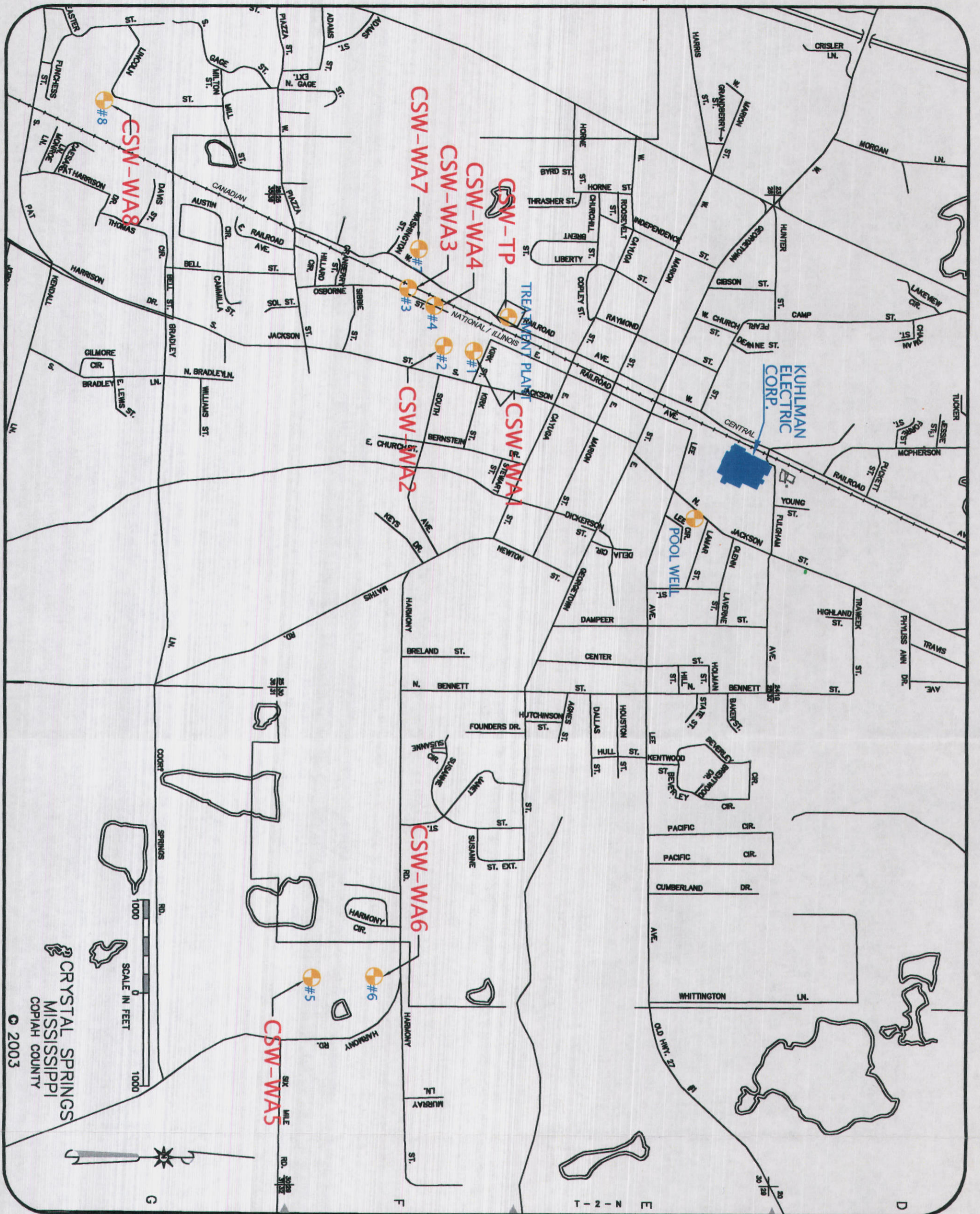


MARTIN & SLAGLE GeoEnvironmental Associates, LLC PO Box 1023 Black Mountain NC 28711 828.669.3929 828.669.5289	SCALE = 1":2000'	VICINITY MAP KUHLMAN ELECTRIC CORPORATION 101 KUHLMAN DRIVE CRYSTAL SPRINGS, MS FIGURE 1
	REV: 0	
	DATE: 8/3/07	
	DR: DGR	
	CHK: RLM	
	PREPARED FOR: BorgWarner Inc.	

RAFT



CRYSTAL SPRINGS
MISSISSIPPI
COPIAH COUNTY

© 2003

LEGEND



MUNICIPAL WELL

SCALE 1"=1000'
DR: DGR
CHK: RLM
REV: 0
DATE: 8/3/07
SOURCE: MS D.O.T.

GeoEnvironmental Associates LLC **MARTIN & SLAGLE**

PO Box 1023 Black Mountain NC 28711 p 828.669.3929 f 828.669.5289

PREPARED FOR:
BORGWARNER

CRYSTAL SPRINGS
MUNICIPAL WELL
LOCATION MAP
KUHLMAN ELECTRIC CORPORATION
101 KUHLMAN DRIVE
CRYSTAL SPRINGS, MS

2
FIGURE

DRAFT



KUHLMAN
ELECTRIC
CORPORATION
CLOSED

GeoEnvironmental Associates, LLC
MARTIN & SLAGLE
 PO Box 1023
 Black Mountain NC 28711
 828.669.3929 828.669.5289

PREPARED FOR:
BorgWarner
 DRAWING NAME:
 GROUNDWATER
 INTERIM PROGRESS REPORT\F3

LEGEND
 MW-00X MONITORING WELL LOCATION

MONITORING WELL LOCATION MAP
 KUHLMAN ELECTRIC CORPORATION
 101 KUHLMAN DRIVE
 CRYSTAL SPRINGS, MS

SCALE 1"=400'
 DR: DGR
 CHK: RLM
 REV: 0
 DATE: 8/03/07

3
 FIGURE

DRAFT

Table 1
 Summary of Crystal Springs Municipal Well Sampling Results for 1,1-DCE
 (1,1-Dichloroethene)
 September 2004 through June 2007
 Kuhlman Electric Corporation
 Crystal Springs, MS

Well ID	CSW-WA1	CSW-WA2	CSW-WA3 ¹	CSW-WA4 ²	CSW-WA5	CSW-WA6	CSW-WA7 ³	CSW-WA8	CSW-TP	Pool Well ⁴
Sample Date	(ug/L)	(ug/L)	(ug/L)	(ug/L)	(ug/L)	(ug/L)	(ug/L)	(ug/L)	(ug/L)	(ug/L)
9/7/2004	<1.0	<1.0	<1.0	<1.0	-	-	3.2	-	-	<1.0
11/14/2005	<1.0	<1.0	<1.0	<1.0	-	-	9.7	-	<1.0	-
11/16/2005	-	-	-	-	-	-	8.7	-	-	-
3/15/2006	<1.0	<1.0	<1.0	<1.0	-	-	-	<1.0	<1.0	-
9/21/2006	<1.0	<1.0	<1.0	-	-	-	-	<1.0	<1.0	-
11/8/2006	<1.0	<1.0	<1.0	-	<1.0	<1.0	-	<1.0	<1.0	-
12/13/2006	1.0	<1.0	<1.0	-	<1.0	<1.0	-	<1.0	<1.0	-
1/16/2007	<1.0	<1.0	<1.0	-	<1.0	<1.0	-	<1.0	<1.0	-
2/13/2007	1.0	<1.0	<1.0	-	<1.0	<1.0	-	<1.0	<1.0	-
3/13/2007	<1.0	<1.0	<1.0	-	<1.0	<1.0	-	<1.0	<1.0	-
4/17/2007	<1.0	<1.0	<1.0	-	<1.0	NC	-	<1.0	<1.0	-
5/22/2007	<1.0	<1.0	<1.0	-	<1.0	<1.0	-	<1.0	<1.0	-
6/19/2007	<1.0	<1.0	<1.0	-	<1.0	<1.0	-	<1.0	<1.0	-

1. Sample had Well ID of CSW-WA5 during the 9-7-04 sampling event

2. Sample had Well ID of CSW-WA3 during the 9-7-04 sampling event

3. Sample had Well ID of CSW-WA4 during the 9-7-04 sampling event

4. Sample had Well ID of CSW-WA6 during the 9-7-04 sampling event

Concentrations in bold exceed the MDEQ Tier 1 Target Remediation Goal (TRG) for 1,1-DCE of 7.0 ug/L (ppb)
 A result of (-) indicates this municipal well was not sampled during the specified monitoring event

NC = Sample not collected due to pump failure

Table 2
 Summary of On-site Monitoring Well Preliminary Groundwater Sample Results for VOCs and 1,4-Dioxane
 March 2005 through August 2007
 Kuhlman Electric Corporation
 Crystal Springs, MS

Well ID	Field Lab Sample ID	Sample ID	Date Collected	Time Collected	VOCs Date Analyzed	1,4-Dioxane Date Analyzed	1,1-Dichloroethene	1,1-Dichloroethane	1,1,1-Trichloroethane	1,2-Dichloroethane	1,1,2-Trichloroethane	Chloroform	Dibromochloromethane	1,4-Dioxane
MW-01	W1083	KEP-GW-001-003	2-Mar-05	11:04	3-Mar-05	-	18	< 1.0	< 1.0	< 1.0	< 1.0	< 1.0	< 1.0	-
MW-03	W1084	KEP-GW-003-003	2-Mar-05	13:06	3-Mar-05	-	43	1.1	< 1.0	< 1.0	< 1.0	< 1.0	< 1.0	-
MW-08	W1085	KEP-GW-008-003	2-Mar-05	14:04	3-Mar-05	-	5.0	< 1.0	< 1.0	< 1.0	< 1.0	< 1.0	< 1.0	-
MW-07	W1086	KEP-GW-007-003	2-Mar-05	14:57	3-Mar-05	-	1.4	< 1.0	< 1.0	< 1.0	< 1.0	< 1.0	< 1.0	-
MW-06	W1087	KEP-GW-006-003	2-Mar-05	15:14	3-Mar-05	-	20	< 1.0	< 1.0	< 1.0	< 1.0	< 1.0	< 1.0	-
MW-05	W1088	KEP-GW-005-003	2-Mar-05	15:28	3-Mar-05	-	< 1.0	< 1.0	< 1.0	< 1.0	< 1.0	< 1.0	< 1.0	-
MW-04	W1089	KEP-GW-004-003	2-Mar-05	16:03	3-Mar-05	-	18	< 1.0	< 1.0	< 1.0	< 1.0	< 1.0	< 1.0	-
MW-02	W1090	KEP-GW-002-003	2-Mar-05	16:17	3-Mar-05	-	64	1.8	< 1.0	< 1.0	< 1.0	< 1.0	< 1.0	-
MW-03	W1091	KEP-Duplicate	2-Mar-05		3-Mar-05	-	42	1.1	< 1.0	< 1.0	< 1.0	< 1.0	< 1.0	-
MW-09	W1140	KEP-GW-009-001	12-Mar-05	11:19	12-Mar-05	-	13	< 1.0	< 1.0	< 1.0	< 1.0	< 1.0	< 1.0	-
MW-09	W1142	KEP-Duplicate	12-Mar-05		12-Mar-05	-	14	< 1.0	< 1.0	< 1.0	< 1.0	< 1.0	< 1.0	-
MW-06	W1369	KEP-GW-006-004	18-Sep-05	15:09	19-Sep-05	-	12	< 1.0	< 1.0	< 1.0	< 1.0	< 1.0	< 1.0	-
MW-07	W1370	KEP-GW-007-004	18-Sep-05	15:22	19-Sep-05	-	< 1.0	< 1.0	< 1.0	< 1.0	< 1.0	< 1.0	< 1.0	-
MW-05	W1371	KEP-GW-005-004	18-Sep-05	15:45	19-Sep-05	-	< 1.0	< 1.0	< 1.0	< 1.0	< 1.0	< 1.0	< 1.0	-
MW-02	W1373	KEP-GW-002-004	18-Sep-05	16:08	19-Sep-05	-	40	1.5	1.6	< 1.0	< 1.0	< 1.0	< 1.0	-
MW-04	W1374	KEP-GW-004-004	18-Sep-05	16:45	19-Sep-05	-	18	< 1.0	< 1.0	< 1.0	< 1.0	< 1.0	< 1.0	-
MW-09	W1375	KEP-GW-009-002	18-Sep-05	17:03	19-Sep-05	-	13	< 1.0	< 1.0	< 1.0	< 1.0	< 1.0	< 1.0	-
MW-02	W1376	KEP-Duplicate	18-Sep-05		19-Sep-05	-	42	1.3	1.4	< 1.0	< 1.0	< 1.0	< 1.0	-
MW-08	W1409	KEP-GW-008-004	22-Sep-05	17:25	22-Sep-05	-	5.0	< 1.0	< 1.0	< 1.0	< 1.0	< 1.0	< 1.0	-
MW-03	W1411	KEP-GW-003-004	23-Sep-05	10:25	23-Sep-05	-	28	< 1.0	< 1.0	< 1.0	< 1.0	< 1.0	< 1.0	-
MW-03	W1412	KEP-Duplicate	23-Sep-05		23-Sep-05	-	33	< 1.0	< 1.0	< 1.0	< 1.0	< 1.0	< 1.0	-
MW-02	W1700	KEP-GW-002-005	20-Sep-06	15:30	22-Sep-06	22-Sep-06	8.3	< 1.0	< 1.0	< 1.0	< 1.0	< 1.0	< 1.0	13
MW-03	W1701	KEP-GW-003-005	20-Sep-06	20:20	22-Sep-06	22-Sep-06	26	2.4	< 1.0	< 1.0	< 1.0	< 1.0	< 1.0	30
MW-04	W1702	KEP-GW-004-005	20-Sep-06	17:45	22-Sep-06	22-Sep-06	32	< 1.0	< 1.0	< 1.0	< 1.0	< 1.0	< 1.0	< 5.0
MDEQ Tier 1 TRG (Target Remediation Goal) (ug/L)							7	798	200	5	5	0.155	0.126	6.09

Concentrations in bold exceed their respective MDEQ Tier 1 TRG

A result of (-) indicates that 1,4-dioxane was not analyzed for during the specified sampling event
 Results reported in micrograms per liter (ug/L)

Table 2
 Summary of On-site Monitoring Well Preliminary Groundwater Sample Results for VOCs and 1,4-Dioxane
 March 2005 through August 2007
 Kuhlman Electric Corporation
 Crystal Springs, MS

Well ID	Field Lab Sample ID	Sample ID	Date Collected	Time Collected	VOCs Date Analyzed	1,4-Dioxane Date Analyzed	1,1-Dichloroethene	1,1-Dichloroethane	1,1,1-Trichloroethane	1,2-Dichloroethane	1,1,2-Trichloroethane	Chloroform	Dibromochloromethane	1,4-Dioxane
MW-05	W1703	KEP-GW-005-005	20-Sep-06	14:05	22-Sep-06	22-Sep-06	< 1.0	< 1.0	< 1.0	< 1.0	< 1.0	< 1.0	< 1.0	< 5.0
MW-06	W1704	KEP-GW-006-005	20-Sep-06	12:30	22-Sep-06	22-Sep-06	3.3	< 1.0	< 1.0	< 1.0	< 1.0	< 1.0	< 1.0	< 5.0
MW-07	W1705	KEP-GW-007-005	20-Sep-06	10:20	22-Sep-06	22-Sep-06	< 1.0	< 1.0	< 1.0	< 1.0	< 1.0	< 1.0	< 1.0	< 5.0
MW-08	W1706	KEP-GW-008-005	20-Sep-06	11:40	22-Sep-06	22-Sep-06	2.2	< 1.0	< 1.0	< 1.0	< 1.0	< 1.0	< 1.0	< 5.0
MW-09	W1707	KEP-GW-009-003	20-Sep-06	19:15	22-Sep-06	22-Sep-06	10	< 1.0	< 1.0	< 1.0	< 1.0	< 1.0	< 1.0	< 5.0
MW-02	W1708	KEP-Duplicate	20-Sep-06		22-Sep-06	22-Sep-06	15	< 1.0	< 1.0	< 1.0	< 1.0	< 1.0	< 1.0	14
MW-02	W1948	KEP-GW-002-006	31-Jul-07	10:22	1-Aug-07	31-Jul-07	14	< 1.0	< 1.0	< 1.0	< 1.0	< 1.0	< 1.0	6.0
MW-03	W1949	KEP-GW-003-006	29-Jul-07	17:30	1-Aug-07	31-Jul-07	35	3.6	< 1.0	< 1.0	< 1.0	< 1.0	< 1.0	41
MW-04	W1951	KEP-GW-004-006	31-Jul-07	8:55	1-Aug-07	31-Jul-07	31	< 1.0	< 1.0	< 1.0	< 1.0	< 1.0	< 1.0	< 1.0
MW-05	W1952	KEP-GW-005-006	3-Aug-07	15:10	3-Aug-07	3-Aug-07	< 1.0	< 1.0	< 1.0	< 1.0	< 1.0	< 1.0	< 1.0	< 1.0
MW-06	W1953	KEP-GW-006-006	29-Jul-07	15:45	1-Aug-07	31-Jul-07	10	< 1.0	< 1.0	< 1.0	< 1.0	< 1.0	< 1.0	< 1.0
MW-07	W1954	KEP-GW-007-006	29-Jul-07	11:08	1-Aug-07	31-Jul-07	< 1.0	< 1.0	< 1.0	< 1.0	< 1.0	< 1.0	< 1.0	< 1.0
MW-08	W1955	KEP-GW-008-006	29-Jul-07	13:30	1-Aug-07	31-Jul-07	3.0	< 1.0	< 1.0	< 1.0	< 1.0	< 1.0	< 1.0	< 1.0
MW-09	W1956	KEP-GW-009-004	31-Jul-07	13:15	1-Aug-07	31-Jul-07	13	< 1.0	< 1.0	< 1.0	< 1.0	< 1.0	< 1.0	< 1.0
MW-10A	W1957	KEP-GW-010A-001	2-Aug-07	19:43	3-Aug-07	3-Aug-07	120	4.4	3.1	2.4	5.6	< 1.0	< 1.0	8.3
MW-10B	W1958	KEP-GW-010B-001	2-Aug-07	20:17	3-Aug-07	3-Aug-07	4.1	< 1.0	< 1.0	< 1.0	< 1.0	< 1.0	< 1.0	6.0
MW-10C	W1959	KEP-GW-010C-001	30-Jul-07	18:25	1-Aug-07	1-Aug-07	< 1.0	< 1.0	< 1.0	< 1.0	< 1.0	1.7	1.5	< 2.0
MW-13	W1963	KEP-GW-013-001	1-Aug-07	13:30	2-Aug-07	1-Aug-07	< 1.0	< 1.0	< 1.0	< 1.0	< 1.0	< 1.0	< 1.0	< 1.0
MDEQ Tier 1 TRG (Target Remediation Goal) (ug/L)							7	798	200	5	5	0.155	0.126	6.09

Concentrations in bold exceed their respective MDEQ Tier 1 TRG

A result of (-) indicates that 1,4-dioxane was not analyzed for during the specified sampling event
 Results reported in micrograms per liter (ug/L)

Summary of On-Site Monitoring Well Preliminary Groundwater Sample Results for Chlorinated Benzenes
 March 2005 through August 2007
 Kuhlman Electric Corporation
 Crystal Springs, MS

DRAFT

Well ID	Field Lab Sample ID	Sample ID	Date Collected	Time Collected	Date Analyzed	1,3,5-Trichloro-benzene	1,2,4-Trichloro-benzene	1,2,3-Trichloro-benzene	1,2,3,5-& 1,2,4,5-Tetrachloro-benzene	1,2,3,4-Tetrachloro-benzene	Penta-chloro-benzene	Hexa-chloro-benzene
MW-01	W1083	KEP-GW-001-003	2-Mar-05	11:04	3-Mar-05	< 0.025	< 0.025	0.10	< 0.050	< 0.025	< 0.025	< 0.025
MW-03	W1084	KEP-GW-003-003	2-Mar-05	13:06	3-Mar-05	0.079	0.14	0.45	0.059	0.29	0.032	< 0.025
MW-08	W1085	KEP-GW-008-003	2-Mar-05	14:24	3-Mar-05	< 0.025	< 0.025	< 0.025	< 0.050	< 0.025	< 0.025	< 0.025
MW-07	W1086	KEP-GW-007-003	2-Mar-05	14:57	3-Mar-05	< 0.025	< 0.025	< 0.025	< 0.050	< 0.025	< 0.025	< 0.025
MW-06	W1087	KEP-GW-006-003	2-Mar-05	15:14	3-Mar-05	0.097	< 0.025	0.039	0.20	0.25	0.22	< 0.025
MW-05	W1088	KEP-GW-005-003	2-Mar-05	15:28	3-Mar-05	< 0.025	< 0.025	< 0.025	< 0.050	< 0.025	< 0.025	< 0.025
MW-04	W1089	KEP-GW-004-003	2-Mar-05	16:03	3-Mar-05	< 0.025	< 0.025	0.029	< 0.050	< 0.025	< 0.025	< 0.025
MW-02	W1090	KEP-GW-002-003	2-Mar-05	16:17	3-Mar-05	< 0.025	< 0.025	< 0.025	< 0.050	< 0.025	< 0.025	< 0.025
MW-03	W1091	KEP-Duplicate	2-Mar-05		3-Mar-05	0.072	0.14	0.50	0.057	0.29	0.031	< 0.025
MW-09	W1140	KEP-GW-009-001	12-Mar-05	11:19	12-Mar-05	< 1.0	< 1.0	< 1.0	< 0.40	< 0.40	< 0.20	< 0.20
MW-09	W1142	KEP-Duplicate	12-Mar-05		12-Mar-05	< 1.0	< 1.0	< 1.0	< 0.40	< 0.40	< 0.20	< 0.20
MW-06	W1369	KEP-GW-006-004	18-Sep-05	15:09	19-Sep-05	< 1.0	< 1.0	< 1.0	< 0.40	< 0.40	< 0.20	< 0.20
MW-07	W1370	KEP-GW-007-004	18-Sep-05	15:22	19-Sep-05	< 1.0	< 1.0	< 1.0	< 0.40	< 0.40	< 0.20	< 0.20
MW-05	W1371	KEP-GW-005-004	18-Sep-05	15:45	19-Sep-05	< 1.0	< 1.0	< 1.0	< 0.40	< 0.40	< 0.20	< 0.20
MW-02	W1373	KEP-GW-002-004	18-Sep-05	16:08	19-Sep-05	< 1.0	< 1.0	< 1.0	< 0.40	< 0.40	< 0.20	< 0.20
MW-04	W1374	KEP-GW-004-004	18-Sep-05	16:45	19-Sep-05	< 1.0	< 1.0	< 1.0	< 0.40	< 0.40	< 0.20	< 0.20
MW-09	W1375	KEP-GW-009-002	18-Sep-05	17:03	19-Sep-05	< 1.0	< 1.0	< 1.0	< 0.40	< 0.40	< 0.20	< 0.20
MW-02	W1376	KEP-Duplicate	18-Sep-05		19-Sep-05	< 1.0	< 1.0	< 1.0	< 0.40	< 0.40	< 0.20	< 0.20
MW-08	W1409	KEP-GW-008-004	22-Sep-05	17:25	22-Sep-05	< 1.0	< 1.0	< 1.0	< 0.40	< 0.40	< 0.20	< 0.20
MW-03	W1411	KEP-GW-003-004	23-Sep-05	10:25	23-Sep-05	< 1.0	< 1.0	< 1.0	< 0.40	< 0.40	< 0.20	< 0.20
MW-03	W1412	KEP-Duplicate	23-Sep-05		23-Sep-05	< 1.0	< 1.0	< 1.0	< 0.40	< 0.40	< 0.20	< 0.20
MW-02	W1700	KEP-GW-002-005	20-Sep-06	15:30	20-Sep-06	< 0.025	< 0.025	< 0.025	< 0.050	0.025	< 0.025	< 0.025
MW-03	W1701	KEP-GW-003-005	20-Sep-06	20:20	21-Sep-06	< 0.025	< 0.025	0.16	< 0.050	0.096	< 0.025	< 0.025
MW-04	W1702	KEP-GW-004-005	20-Sep-06	17:45	20-Sep-06	< 0.025	< 0.025	0.057	< 0.050	< 0.025	< 0.025	< 0.025
MW-05	W1703	KEP-GW-005-005	20-Sep-06	14:05	20-Sep-06	< 0.025	< 0.025	< 0.025	< 0.050	< 0.025	< 0.025	< 0.025
MW-06	W1704	KEP-GW-006-005	20-Sep-06	12:30	20-Sep-06	< 0.025	< 0.025	< 0.025	< 0.050	0.080	0.076	< 0.025
MDEQ Tier 1 Target Remediation Goal (ug/L)						NS	70	NS	11	NS	29.2	1

Concentrations in bold exceed their respective MDEQ Tier 1 TRG

NS - No MDEQ Tier 1 TRG established
 Results reported in micrograms per liter (ug/L)

Summary of On-Site Monitoring Well Preliminary Groundwater Sample Results for Chlorinated Benzenes
March 2005 through August 2007
Kuhlman Electric Corporation
Crystal Springs, MS

DRAFT

File 3

Well ID	Field Lab Sample ID	Sample ID	Date Collected	Time Collected	Date Analyzed	1,3,5-Trichloro-benzene	1,2,4-Trichloro-benzene	1,2,3-Trichloro-benzene	1,2,3,5-Tetrachloro-benzene	1,2,3,4-Tetrachloro-benzene	Penta-chloro-benzene	Hexa-chloro-benzene
MW-07	W1705	KEP-GW-007-005	20-Sep-06	10:20	20-Sep-06	< 0.025	< 0.025	< 0.025	< 0.050	< 0.025	< 0.025	< 0.025
MW-08	W1706	KEP-GW-008-005	20-Sep-06	11:40	20-Sep-06	< 0.025	< 0.025	< 0.025	< 0.050	< 0.025	< 0.025	< 0.025
MW-09	W1707	KEP-GW-009-003	20-Sep-06	19:15	20-Sep-06	< 0.025	< 0.025	< 0.025	< 0.050	< 0.025	< 0.025	< 0.025
MW-02	W1708	KEP-Duplicate	20-Sep-06		20-Sep-06	< 0.025	< 0.025	< 0.025	< 0.050	< 0.025	< 0.025	< 0.025
MW-02	W1948	KEP-GW-002-006	31-Jul-07	10:22	31-Jul-07	< 0.10	< 0.10	< 0.10	< 0.10	< 0.10	< 0.10	< 0.10
MW-03	W1949	KEP-GW-003-006	29-Jul-07	17:30	31-Jul-07	< 0.10	< 0.10	< 0.10	< 0.10	< 0.10	< 0.10	< 0.10
MW-04	W1951	KEP-GW-004-006	31-Jul-07	8:55	31-Jul-07	< 0.10	< 0.10	< 0.10	< 0.10	< 0.10	< 0.10	< 0.10
MW-05	W1952	KEP-GW-005-006	3-Aug-07	15:10	3-Aug-07	< 0.10	< 0.10	< 0.10	< 0.10	< 0.10	< 0.10	< 0.10
MW-06	W1953	KEP-GW-006-006	29-Jul-07	15:45	31-Jul-07	< 0.10	< 0.10	< 0.10	< 0.10	< 0.10	< 0.10	< 0.10
MW-07	W1954	KEP-GW-007-006	29-Jul-07	11:08	31-Jul-07	< 0.10	< 0.10	< 0.10	< 0.10	< 0.10	< 0.10	< 0.10
MW-08	W1955	KEP-GW-008-006	29-Jul-07	13:30	31-Jul-07	< 0.10	< 0.10	< 0.10	< 0.10	< 0.10	< 0.10	< 0.10
MW-09	W1956	KEP-GW-009-004	31-Jul-07	13:15	31-Jul-07	< 0.10	< 0.10	< 0.10	< 0.10	< 0.10	< 0.10	< 0.10
MW-10A	W1957	KEP-GW-010A-001	2-Aug-07	19:43	3-Aug-07	< 0.10	< 0.10	< 0.10	< 0.10	< 0.10	< 0.10	< 0.10
MW-10B	W1958	KEP-GW-010B-001	2-Aug-07	20:17	3-Aug-07	< 0.10	< 0.10	< 0.10	< 0.10	< 0.10	< 0.10	< 0.10
MW-10C	W1959	KEP-GW-010C-001	30-Jul-07	18:25	31-Jul-07	< 0.10	< 0.10	< 0.10	< 0.10	< 0.10	< 0.10	< 0.10
MW-13	W1963	KEP-GW-013-001	1-Aug-07	13:30	1-Aug-07	< 0.10	< 0.10	< 0.10	< 0.10	< 0.10	< 0.10	< 0.10
MDEQ Tier 1 Target Remediation Goal (ug/L)						NS	70	NS	11	NS	29.2	1

Concentrations in bold exceed their respective MDEQ Tier 1 TRG

NS - No MDEQ Tier 1 TRG established
 Results reported in micrograms per liter (ug/L)

Monitoring Well Construction Details
 March 2004 through July 2007
 Kuhlman Electric Corporation
 Crystal Springs, MS

DRAFT

Well No.	Date Installed	Screen Length (ft)	Screen Interval (ft bgs)	Depth of Surface Casing (ft bgs)	Depth to GW (ft bgs)	Ground Surface Elevation (ft msl)	Top Casing Elevation (ft msl)	GW Elevation 4-12-04 (ft msl)	GW Elevation 3-05 (ft msl)	GW Elevation 9-05 (ft msl)	GW Elevation 7-28-07 (ft msl)	Pump Setting (ft bgs)
MW-1	3/9 & 3/11/2004	15	58-73	-	60.37	467.76	467.47	407.1	408.05	-	-	-
MW-2	3/16/2004	15	57-72	-	57.88	465.59	465.23	407.35	408.28	408.96	407.36	65
MW-3	3/18/2004	15	59-64	-	50.63	458.7	458.32	407.69	408.45	409.04	407.3	58
MW-4	3/17/2004	15	55-70	-	51.15	465.75	468.47	407.32	408.27	408.97	406.98	64
MW-5	3/18/2004	15	18-33	-	19.25	457.02	456.55	437.26	436.87	425.84	429.27	26
MW-6	3/25/2004	15	43-58	-	49.53	457.61	457.28	407.75	408.71	409.35	407.46	54
MW-7	3/24/2004	15	51-66	-	54.7	463	462.7	408	408.95	409.7	407.75	61
MW-8	3/26/2004	15	47-62	-	46.78	455.04	454.46	407.68	408.78	409.27	407.59	55
MW-9	3/3/2005	15	61-76	-	63.04	470.21	470.03	-	406.87	407.35	405.81	70
MW-10A	7/7/2007	10	62-72	-	65.05	471.25	470.95	-	-	-	406.2	70
MW-10B	7/7/2007	5	76-81	-	63.85	471.25	470.78	-	-	-	406.4	79
MW-10C	7/17/2007	5	94-99	90	65.05	471.25	470.97	-	-	-	406.2	97
MW-11A	7/5/2007	10	75-85	-	64.75	470.46	470.08	-	-	-	405.71	81
MW-11B	7/18/2007	5	100-105	95	63.55	470.46	470.01	-	-	-	406.91	103
MW-12	6/4/2007	10	65-75	-	59.17	465.66	465.35	-	-	-	406.48	73
MW-13	7/7/2007	10	62-72	-	59.94	465.38	465.12	-	-	-	405.71	70
MW-14A	6/8/2007	10	69.5-79.5	-	59.25	464.2	464.03	-	-	-	404.95	78
MW-14B	6/11/2007	5	97-102	-	59.23	464.2	463.99	-	-	-	404.97	100
MW-15A	6/18/2007	10	65-75	-	62.85	467.53	467.29	-	-	-	404.68	73
MW-15B	6/20/2007	5	86-91	-	62.94	467.53	467.29	-	-	-	404.59	87
MW-16	6/5/2007	10	55-65	-	55.98	460.56	460.24	-	-	-	404.53	63
MW-17A	6/28/2007	10	60-70	-	57.05	460.31	460.02	-	-	-	403.26	65
MW-17B	6/28/2007	5	83-88	-	57.0	460.31	460.04	-	-	-	403.31	86
MW-18A	6/25/2007	10	62-72	-	57.05	459.95	459.46	-	-	-	402.9	69
MW-18B	6/26/2007	5	80-85	-	57.25	459.95	459.67	-	-	-	402.7	82
MW-19	6/6/2007	10	85-95	-	48.9	454.38	454.02	-	-	-	402.48	92
MW-20A	6/22/2007	10	57-67	-	59.37	462.41	462.12	-	-	-	403.04	65
MW-20B	6/21/2007	5	100-105	-	59.25	462.41	462.0	-	-	-	403.16	104
MW-21A	7/2/2007	10	58-68	-	54.2	458.0	458.72	-	-	-	403.8	66
MW-21B	7/16/2007	5	88-93	85	55.19	459	458.65	-	-	-	403.81	92
MW-22	6/12/2007	10	85.5-95.5	-	45.05	447.92	447.54	-	-	-	402.87	90
MW-23A	6/15/2007	10	35-45	-	37.24	440.61	440.12	-	-	-	403.37	43
MW-23B	6/14/2007	5	79-84	-	37.64	440.61	440.41	-	-	-	402.97	81
MW-24	7/5/2007	5	77-82	-	31.97	433.41	433.14	-	-	-	401.44	81
MW-25	7/13/2007	10	98-108	-	51.2	451.26	450.95	-	-	-	400.06	106
MW-26	6/13/2007	10	92-102	-	59.65	459.61	459.37	-	-	-	399.96	101
MW-27	7/17/2007	10	99-109	-	42.5	433.48	433.56	-	-	-	390.98	108

Summary of Off-Site Monitoring Well Preliminary Groundwater Sample Results for VOCs and 1,4-Dioxane
 July 2007 through August 2007
 Kuhlman Electric Corporation
 Crystal Springs, MS

Well ID	Field Lab Sample ID	Sample ID	Date Collected	Time Collected	VOCs Date Analyzed	1,4-Dioxane Date Analyzed	1,1-Dichloroethene	1,1-Dichloroethane	1,1,2-Trichloroethane	Tetra-chloroethene	Toluene	Dibromo-chloro-methane	1,4-Dioxane
MW-11B	W1950	KEP-Duplicate	30-Jul-07	-	1-Aug-07	1-Aug-07	< 1.0	< 1.0	< 1.0	< 1.0	< 1.0	< 1.0	< 1.0
MW-11A	W1960	KEP-GW-011A-001	30-Jul-07	12:40	1-Aug-07	31-Jul-07	27	< 1.0	< 1.0	< 1.0	< 1.0	< 1.0	2.8
MW-11B	W1961	KEP-GW-011B-001	30-Jul-07	14:55	1-Aug-07	31-Jul-07	< 1.0	< 1.0	< 1.0	< 1.0	< 1.0	< 1.0	< 1.0
MW-12	W1962	KEP-GW-012-001	30-Jul-07	8:45	1-Aug-07	31-Jul-07	1.1	< 1.0	< 1.0	< 1.0	< 1.0	< 1.0	< 1.0
MW-14A	W1964	KEP-GW-014A-001	31-Jul-07	18:52	2-Aug-07	1-Aug-07	< 1.0	< 1.0	< 1.0	< 1.0	< 1.0	< 1.0	< 1.0
MW-14B	W1965	KEP-GW-014B-001	31-Jul-07	19:25	2-Aug-07	1-Aug-07	< 1.0	< 1.0	< 1.0	< 1.0	< 1.0	< 1.0	< 1.0
MW-15A	W1966	KEP-GW-015A-001	3-Aug-07	14:15	3-Aug-07	3-Aug-07	45	1.2	1.4	< 1.0	1.6	< 1.0	1.8
MW-15B	W1967	KEP-GW-015B-001	1-Aug-07	9:30	2-Aug-07	1-Aug-07	10	< 1.0	< 1.0	< 1.0	44	< 1.0	4.3
MW-16	W1968	KEP-GW-016-001	30-Jul-07	10:45	1-Aug-07	31-Jul-07	< 1.0	< 1.0	< 1.0	< 1.0	< 1.0	< 1.0	< 1.0
MW-17A	W1969	KEP-GW-017A-001	31-Jul-07	21:40	2-Aug-07	1-Aug-07	48	< 1.0	< 1.0	< 1.0	< 1.0	< 1.0	4.3
MW-17B	W1970	KEP-GW-017B-001	31-Jul-07	21:05	2-Aug-07	1-Aug-07	17	< 1.0	< 1.0	< 1.0	< 1.0	< 1.0	< 1.0
MW-18A	W1971	KEP-GW-018A-001	31-Jul-07	16:10	2-Aug-07	31-Jul-07	31	< 1.0	< 1.0	< 1.0	< 1.0	< 1.0	5.1
MW-18B	W1972	KEP-GW-018B-001	31-Jul-07	15:35	2-Aug-07	1-Aug-07	10	< 1.0	< 1.0	< 1.0	1.6	< 1.0	< 1.0
MW-19	W1973	KEP-GW-019-001	3-Aug-07	9:30	3-Aug-07	3-Aug-07	1.5	< 1.0	< 1.0	< 1.0	< 1.0	< 1.0	< 1.0
MW-20A	W1974	KEP-GW-020A-001	2-Aug-07	16:09	2-Aug-07	2-Aug-07	20	< 1.0	< 1.0	< 1.0	52	< 1.0	< 1.0
MW-20B	W1975	KEP-GW-020B-001	2-Aug-07	17:28	2-Aug-07	2-Aug-07	46	< 1.0	< 1.0	< 1.0	5.4	< 1.0	2.5
MW-21A	W1976	KEP-GW-021A-001	1-Aug-07	19:16	2-Aug-07	2-Aug-07	29	< 1.0	< 1.0	< 1.0	3.6	< 1.0	< 1.0
MW-21B	W1977	KEP-GW-021B-001	3-Aug-07	14:59	3-Aug-07	3-Aug-07	1.1	< 1.0	< 1.0	< 1.0	< 1.0	1.1	< 3.0
MW-22	W1978	KEP-GW-022-001	2-Aug-07	9:20	2-Aug-07	2-Aug-07	< 1.0	< 1.0	< 1.0	< 1.0	< 1.0	< 1.0	< 1.0
MW-23A	W1979	KEP-GW-023A-001	2-Aug-07	15:10	2-Aug-07	2-Aug-07	< 1.0	< 1.0	< 1.0	< 1.0	< 1.0	< 1.0	< 1.0
MW-23B	W1980	KEP-GW-023B-001	2-Aug-07	14:42	2-Aug-07	2-Aug-07	41	< 1.0	< 1.0	< 1.0	< 1.0	< 1.0	1.6
MW-15B	W1981	KEP-Duplicate	1-Aug-07	-	2-Aug-07	1-Aug-07	11	< 1.0	< 1.0	< 1.0	54	< 1.0	4.4
MW-24	W1982	KEP-GW-024-001	2-Aug-07	11:15	2-Aug-07	2-Aug-07	2.3	< 1.0	< 1.0	< 1.0	< 1.0	< 1.0	< 1.0
MW-25	W1983	KEP-GW-025-001	1-Aug-07	17:25	2-Aug-07	1-Aug-07	15	< 1.0	< 1.0	< 1.0	< 1.0	< 1.0	1.8
MW-26	W1984	KEP-GW-026-001	3-Aug-07	10:20	3-Aug-07	3-Aug-07	< 1.0	< 1.0	< 1.0	< 1.0	3.6	< 1.0	< 1.0
MW-27	W1985	KEP-GW-027-001	28-Jul-07	18:41	1-Aug-07	31-Jul-07	< 1.0	< 1.0	< 1.0	< 1.0	< 1.0	< 1.0	< 1.0
MDEQ Tier 1 Target Remediation Goal (ug/L)													6.09
							7	798	5	5	1000	0.126	6.09

Concentrations in bold exceed their respective MDEQ Tier 1 TRG

Results reported in micrograms per liter (ug/L)

**Comparison of 1,1-Dichloroethene Results for Crystal Springs Municipal Water Well Samples
Between Sample and Duplicate Pair for On-site and Off-site Laboratories**

September 2004 through June 2007

Kuhlman Electric Corporation

Crystal Springs, MS

DRAFT

Sample Name	Blind Duplicate	On-site Laboratory Result (ug/L)	On-site Laboratory Duplicate Result (ug/L)	Relative % Difference, On-site Laboratory Results ¹	Off-site Laboratory Result (ug/L)	Off-site Laboratory Duplicate Result (ug/L)	Relative % Difference, Off-site Laboratory Results ¹
CSW-WA1-001	CSW-BD-001	1.0 U	1.0 U	0.0	1.00 U	1.00 U	0.0
CSW-WA7-002	CSW-BD-003	9.7	Sample not analyzed		10.1	10.2	-1.0
CSW-WA7-003	CSW-BD-004	8.7	8.8	-1.1	10.5	10.6	-0.9
CSW-WA3-003	CSW-BD-005	1.0 U	1.0 U	0.0	1.00 U	1.00 U	0.0
CSW-WA3-004	CSW-Duplicate-001	1.0 U	1.0 U	0.0	1.00 U	1.00 U	0.0
CSW-WA3-005	DUPLICATE	1.0 U	1.0 U	0.0	1.00 U	1.00 U	0.0
CSW-WA3-006	DUPLICATE	1.0 U	1.0 U	0.0	1.00 U	1.00 U	0.0
CSW-WA3-007	DUPLICATE-01	1.0 U	1.0 U	0.0	1.00 U	1.00 U	0.0
CSW-WA1-007	DUPLICATE-02	1.0 U	1.0 U	0.0	1.00 U	1.00 U	0.0
CSW-WA1-008	DUPLICATE	1.0	1.0	0.0	1.00 U	1.00 U	0.0
CSW-WA1-009	DUPLICATE	1.0 U	1.0 U	0.0	1.00 U	1.00 U	0.0
CSW-WA1-010	DUPLICATE	1.0 U	1.0 U	0.0	1.00 U	1.00 U	0.0
CSW-WA1-011	DUPLICATE	1.0 U	1.0 U	0.0	1.00 U	1.00 U	0.0
CSW-WA1-012	DUPLICATE	1.0 U	1.0 U	0.0	1.00 U	1.00 U	0.0

U - Not detected at the reported quantitation limit

1. In instances where one result in the duplicate pair is not detected and the other result is detected, if the difference between results is within 2x the quantitation limit, precision criteria are considered to be met

Table 7
Comparison of On-site and Off-site Laboratory 1,1-Dichloroethene
Split Sample Results for Crystal Springs Municipal Water Wells
September 2004 through June 2007
Kuhlman Electric Corporation
Crystal Springs, MS

DRAFT

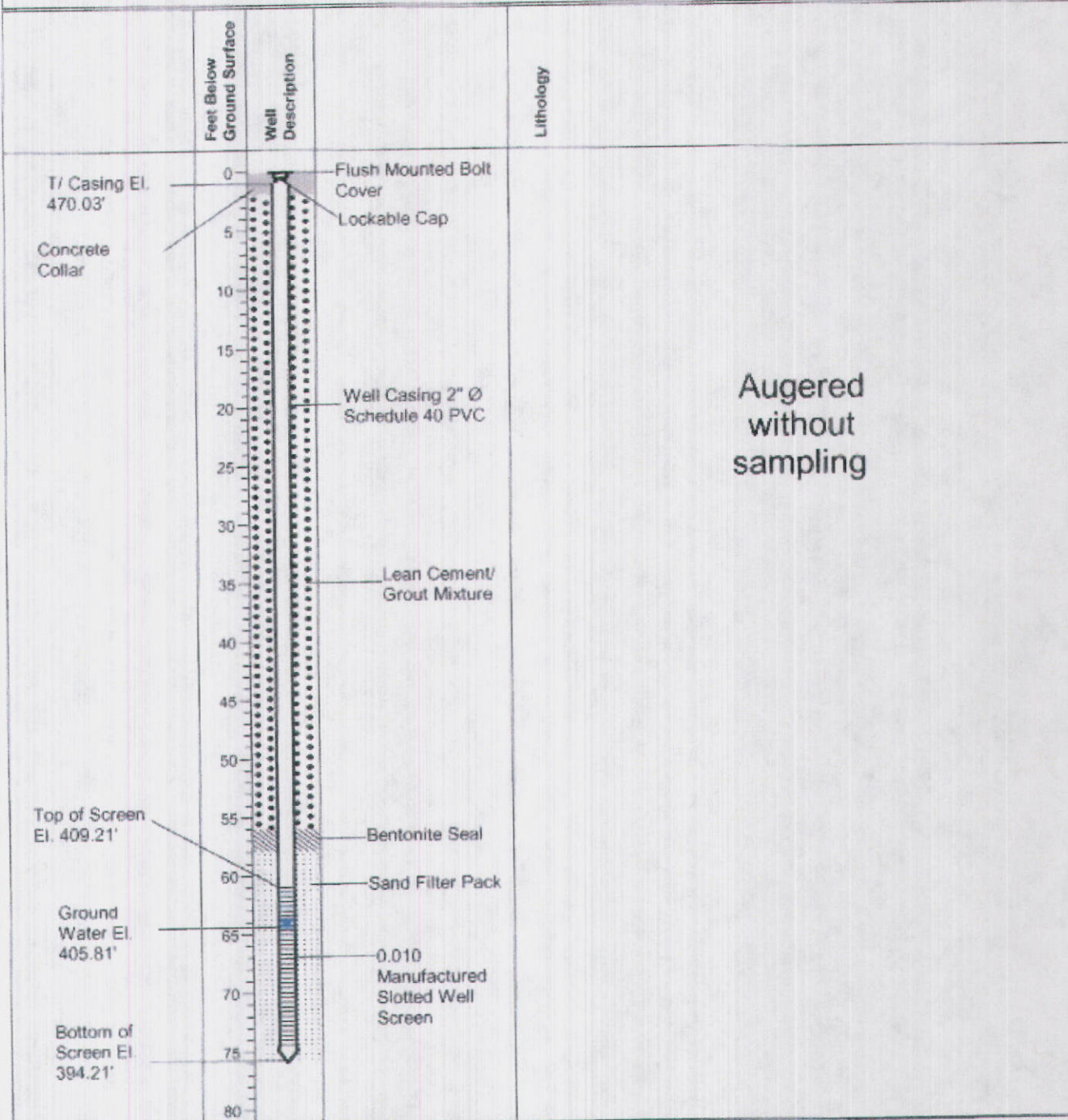
Sample Name	Field #	Sample Date	On-site Laboratory Result (ug/L)	Off-site Laboratory Result (ug/L)	Relative % Difference ¹
CSW-WA1-001	W1021	9/7/2004	1.0 U	1.00 U	0.0
CSW-FB-001	W1022	9/7/2004	1.0 U	1.00 U	0.0
CSW-WA2-001	W1023	9/7/2004	1.0 U	1.00 U	0.0
CSW-WA3-001	W1024	9/7/2004	1.0 U	1.00 U	0.0
CSW-WA4-001	W1025	9/7/2004	3.2	2.93	8.8
CSW-FB-002	W1026	9/7/2004	1.0 U	1.00 U	0.0
CSW-BD-001	W1027	9/7/2004	1.0 U	1.00 U	0.0
CSW-WA5-001	W1028	9/7/2004	1.0 U	1.00 U	0.0
CSW-WA6-001	W1029	9/7/2004	1.0 U	1.00 U	0.0
CSW-WA7-002	W1494	11/14/2005	9.7	10.1	-4.0
CSW-TP-002	W1495	11/16/2005	1.0 U	1.00 U	0.0
CSW-BD-004	W1496	11/16/2005	8.8	10.6	-18.6
CSW-WA7-003	W1497	11/16/2005	8.7	10.5	-18.8
CSW-WA3-003	W1551	3/15/2006	1.0 U	1.00 U	0.0
CSW-BD-005	W1554	3/15/2006	1.0 U	1.00 U	0.0
CSW-TP-004	W1716	9/21/2006	1.0 U	1.00 U	0.0
CSW-Duplicate-001	W1715	9/21/2006	1.0 U	1.00 U	0.0
CSW-WA3-004	W1712	9/21/2006	1.0 U	1.00 U	0.0
CSW-WA3-005	W1738	11/8/2006	1.0 U	1.00 U	0.0
DUPLICATE	W1745	11/8/2006	1.0 U	1.00 U	0.0
CSW-WA3-006	W1757	12/13/2006	1.0 U	1.00 U	0.0
DUPLICATE	W1764	12/13/2006	1.0 U	1.00 U	0.0
CSW-WA3-007	W1781	1/16/2007	1.0 U	1.00 U	0.0
DUPLICATE-01	W1788	1/16/2007	1.0 U	1.00 U	0.0
CSW-WA1-007	W1783	1/16/2007	1.0 U	1.00 U	0.0
DUPLICATE-02	W1789	1/16/2007	1.0 U	1.00 U	0.0
CSW-WA1-008	W1811	2/13/2007	1.0	1.00 U	0.0
DUPLICATE	W1816	2/13/2007	1.0	1.00 U	0.0
CSW-WA1-009	W1840	3/13/2007	1.0 U	1.00 U	0.0
DUPLICATE	W1845	3/13/2007	1.0 U	1.00 U	0.0
CSW-WA1-010	W1846	4/17/2007	1.0 U	1.00 U	0.0
DUPLICATE	W1874	4/17/2007	1.0 U	1.00 U	0.0
CSW-WA1-011	W1886	5/22/2007	1.0 U	1.00 U	0.0
DUPLICATE	W1891	5/22/2007	1.0 U	1.00 U	0.0
CSW-WA1-012	W1905	6/19/2007	1.0 U	1.00 U	0.0
DUPLICATE	W1910	6/19/2007	1.0 U	1.00 U	0.0

U - Not detected at the reported quantitation limit

1. In instances where one result in the split pair is not detected and the other result is detected, if the difference between results is within 2x the quantitation limit, precision criteria are considered to be met

Project: Groundwater Assessment
 Location: Crystal Springs, MS
 Client: BorgWarner, Inc.
 Reviewed By: S. Spinner

Well Number: MW-9
 Coordinates: E- 2289234.47 N- 905266.08
 Ground Surface: 470.21
 Logged By: Robert Martin

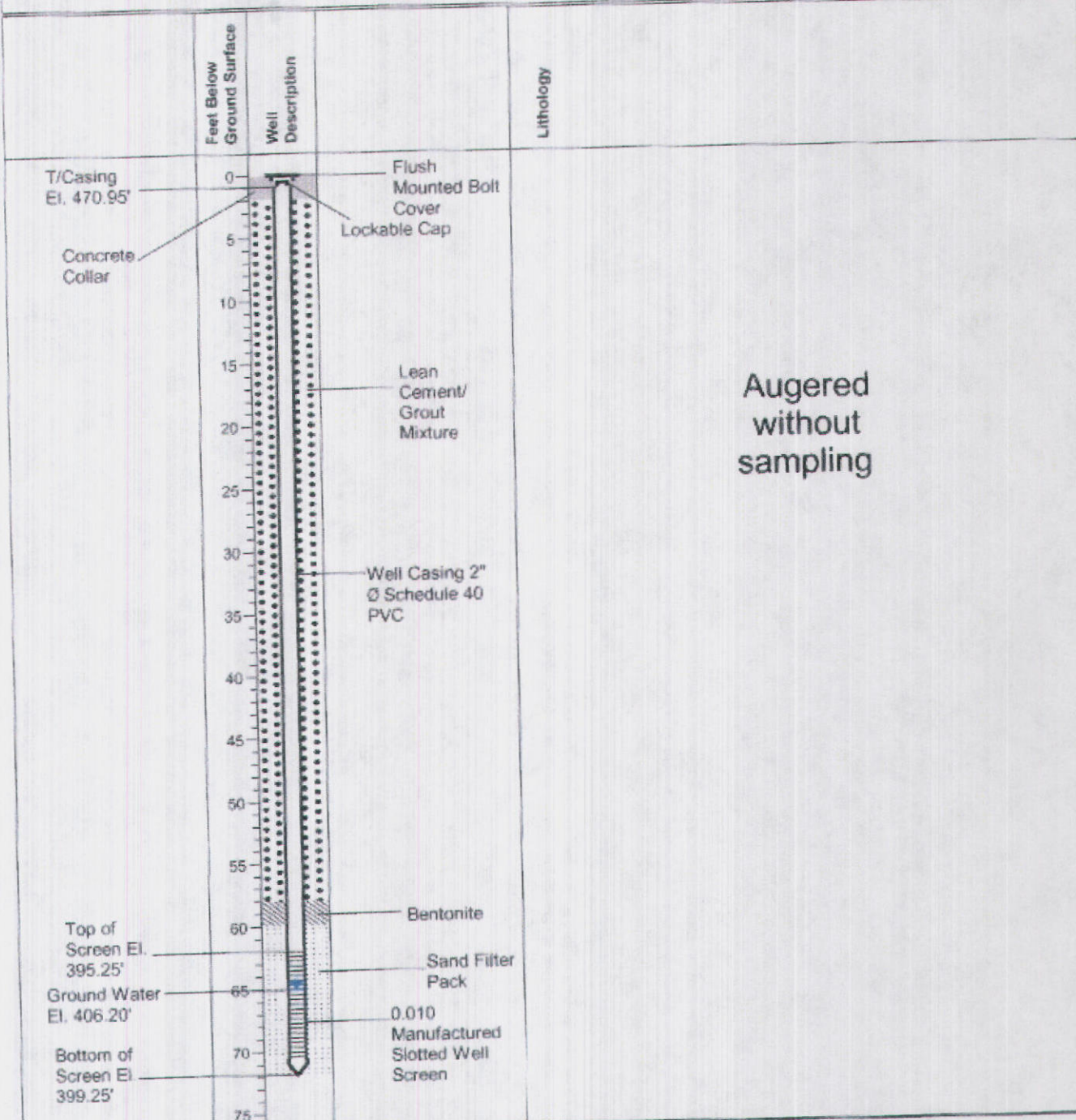


Drilling Contractor: Walker-Hill Environmental, Inc.
 Drilling Method: Rotary Auger/Mud Auger
 Drilling Equipment: Rotary Auger
 Drilling Started: 3/3/2005
 Drilling Ended: 3/3/2005

DRAFT

Project: Groundwater Assessment
 Location: Crystal Springs, MS
 Client: BorgWarner, Inc.
 Reviewed By: S. Spinner

Well Number: MW-10A
 Coordinates: E- 2289297.51 N- 905573.51
 Ground Surface: 471.25
 Logged By: Robert Martin

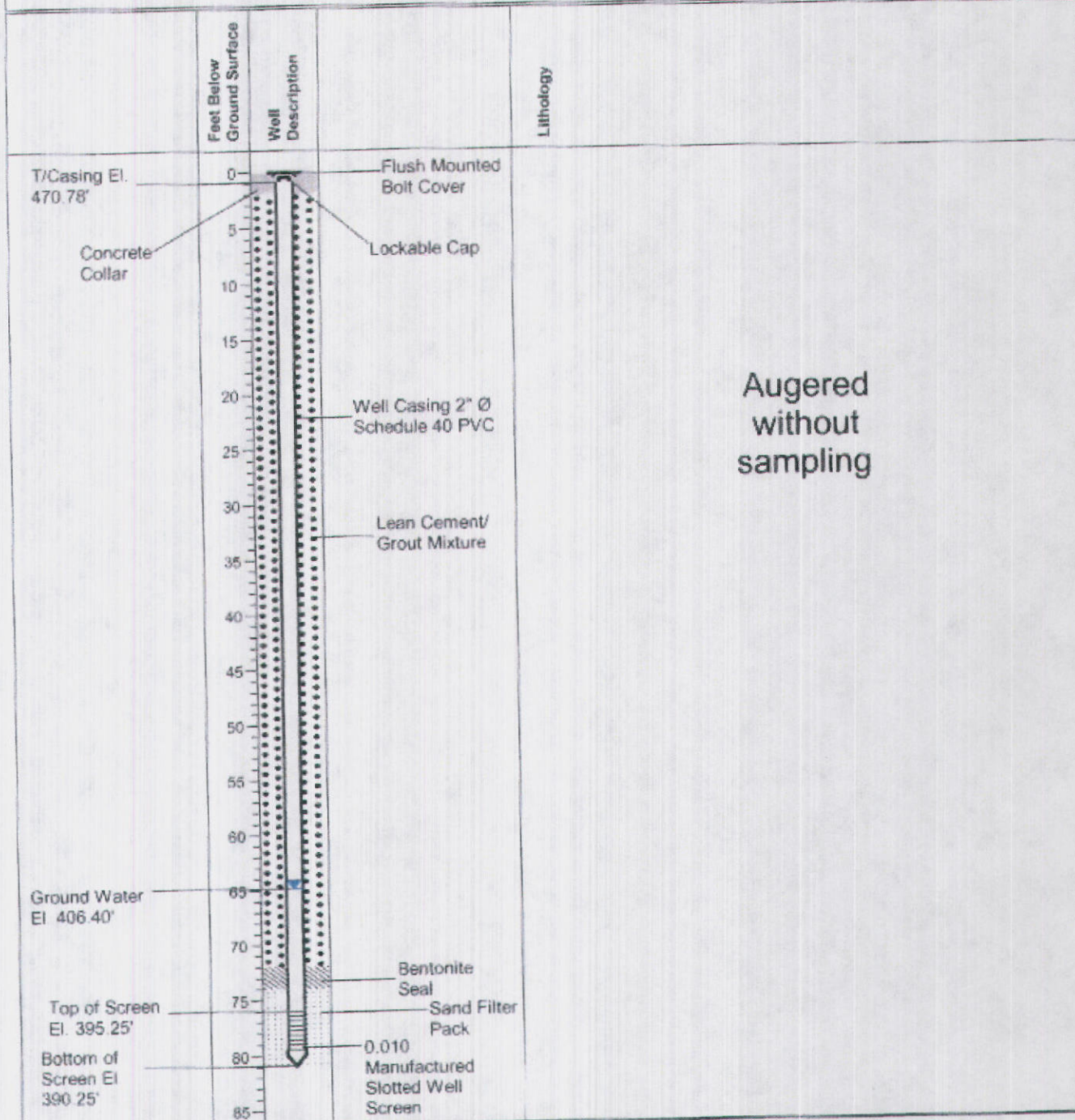


Drilling Contractor: Walker-Hill Engineering, Inc
 Drilling Method: Rotary Auger/Mud Rotary
 Drilling Equipment: Rotary Auger
 Drilling Started: 7/7/2007
 Drilling Ended: 7/7/2007

DRAFT

Project: Groundwater Assessment
 Location: Crystal Springs, MS
 Client: BorgWarner, Inc.
 Reviewed By: S. Spinner

Well Number: MW-10B
 Coordinates: E- 2289309.51 N- 905605.33
 Ground Surface: 471.25
 Logged By: Chuck Peel

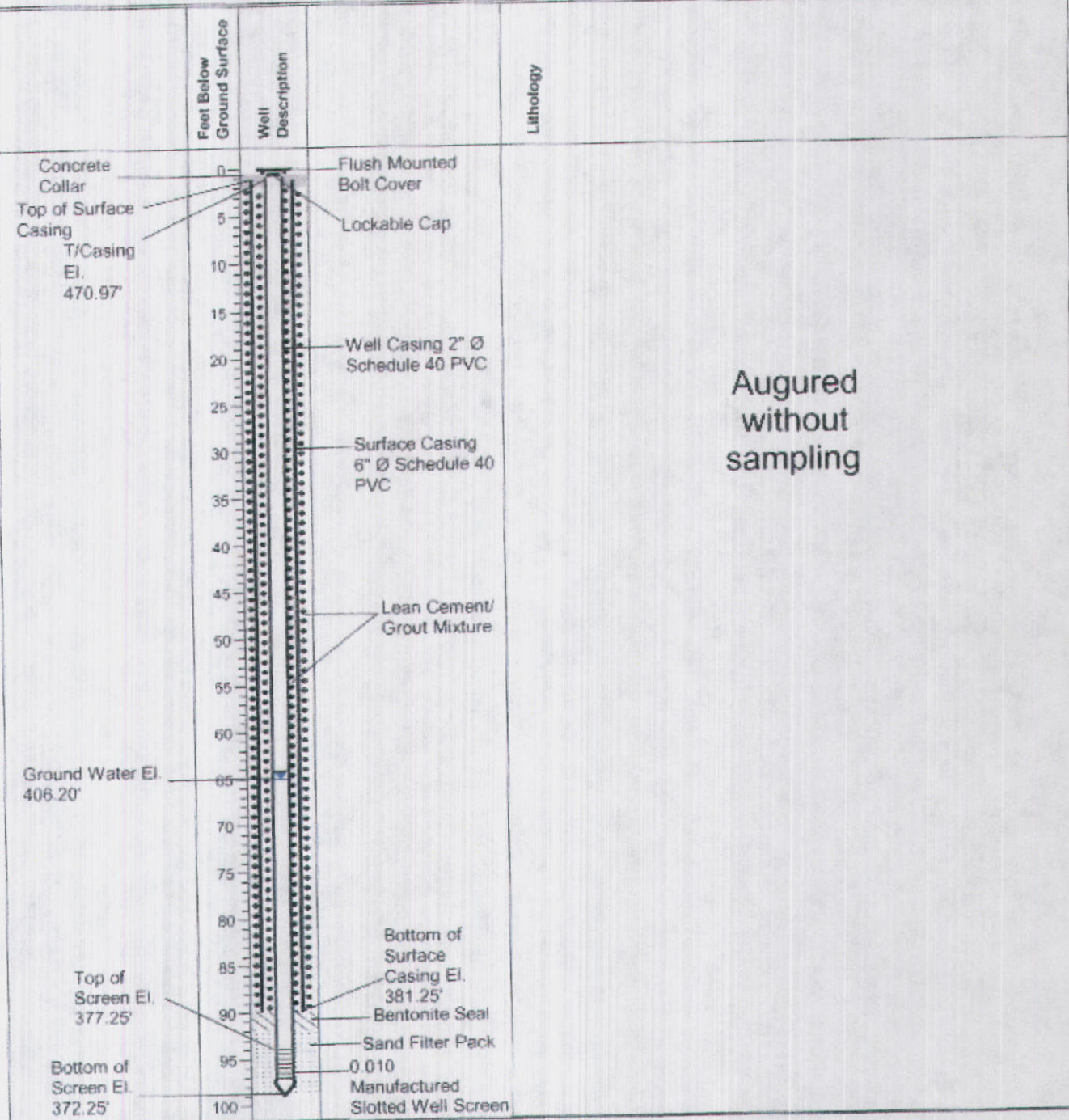


Drilling Contractor: Walker-Hill Environmental, Inc.
 Drilling Method: Rotary Auger & Mud Auger
 Drilling Equipment: Rotary Auger
 Drilling Started: 7/7/2007
 Drilling Ended: 7/7/2007

DRAFT

Project: Groundwater Assessment
 Location: Crystal Springs, MS
 Client: BorgWarner, Inc.
 Reviewed By: S. Spinner

Well Number: MW-10C
 Coordinates: E- 2289301.89 N- 905589.90
 Ground Surface: 471.25
 Logged By: Robert Martin

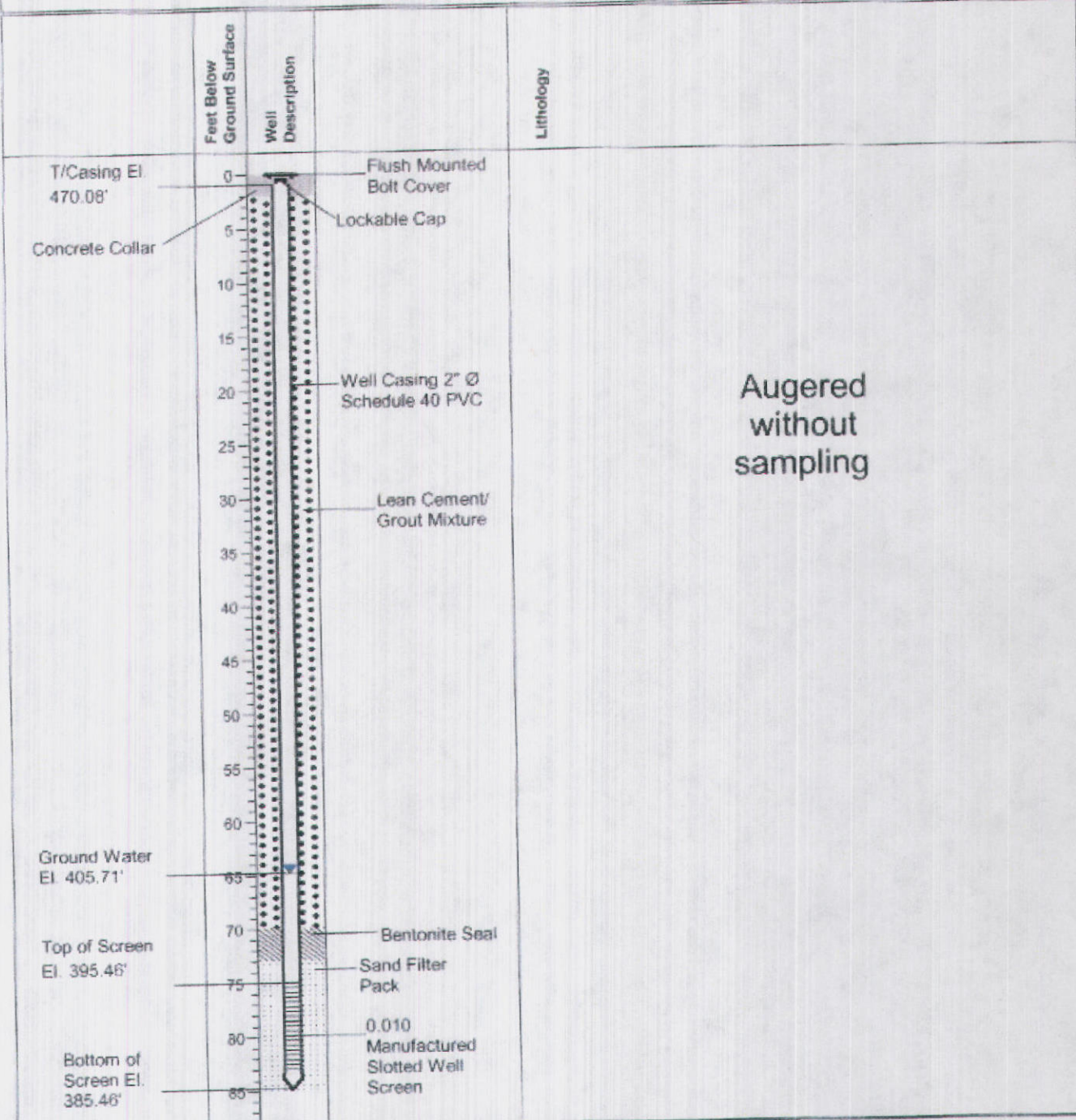


Drilling Contractor: Walker-Hill Environmental, Inc
 Drilling Method: Rotary Auger/Mud Rotary
 Drilling Equipment: Rotary Auger
 Drilling Started: 7/10/2007
 Drilling Ended: 7/17/2007

DRAFT

Project: Groundwater Assessment
 Location: Crystal Springs, MS
 Client: BorgWarner, Inc.
 Reviewed By:

Well Number: MW-11A
 Coordinates: E- 2288964.05 N- 905338.67
 Ground Surface: 470.46
 Logged By: Chuck Peel

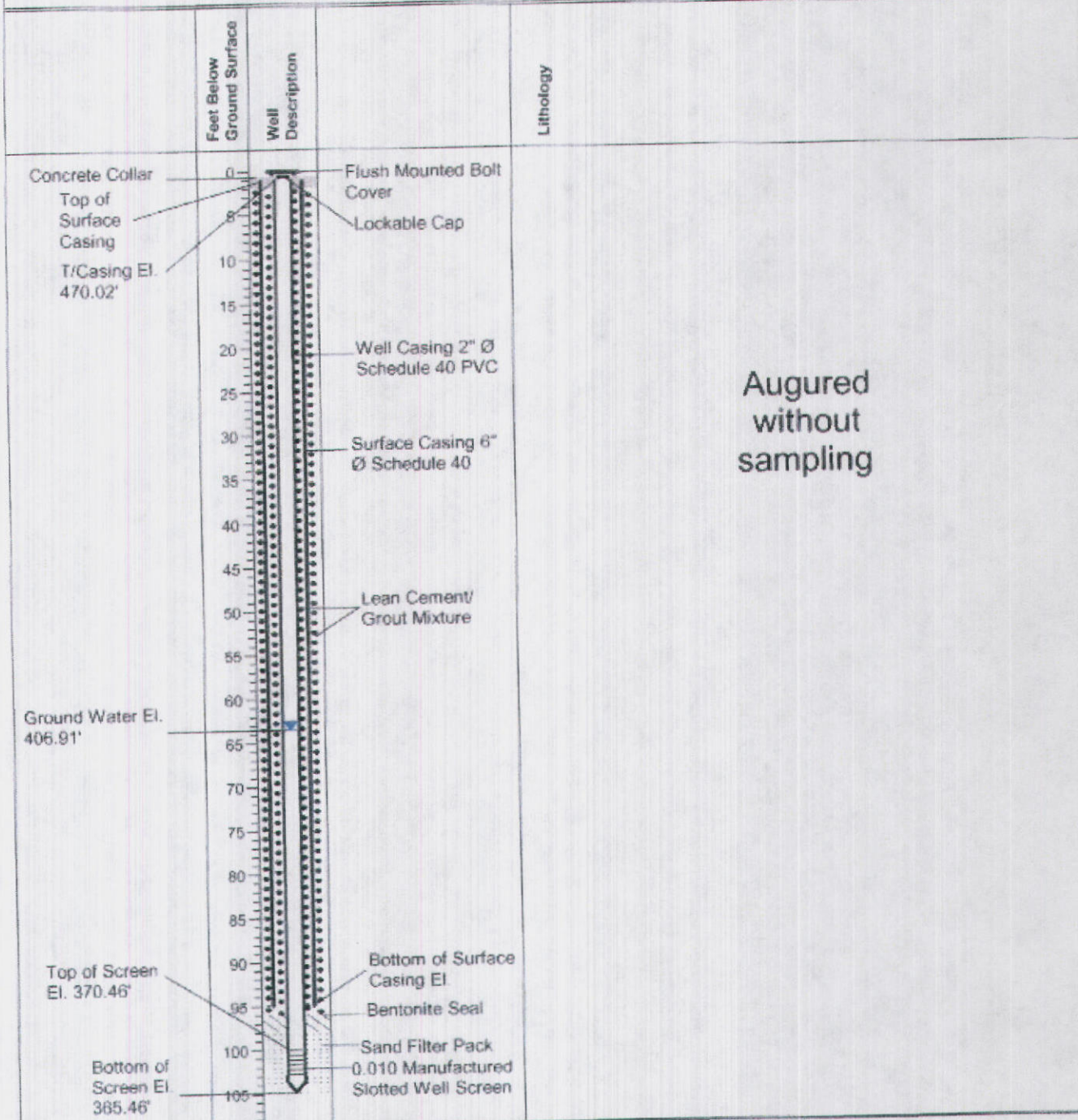


Drilling Contractor: Walker-Hill Environmental, Inc.
 Drilling Method: Rotary Auger & Mud Auger
 Drilling Equipment: Rotary Auger
 Drilling Started: 7/5/2007
 Drilling Ended: 7/5/2007

DRAFT

Project: Groundwater Assessment
 Location: Crystal Springs, MS
 Client: BorgWarner, Inc.
 Reviewed By: S. Spinner

Well Number: MW-11B
 Coordinates: E- 2288957.27 N- 905341.65
 Ground Surface: 470.46
 Logged By: Chuck Peel

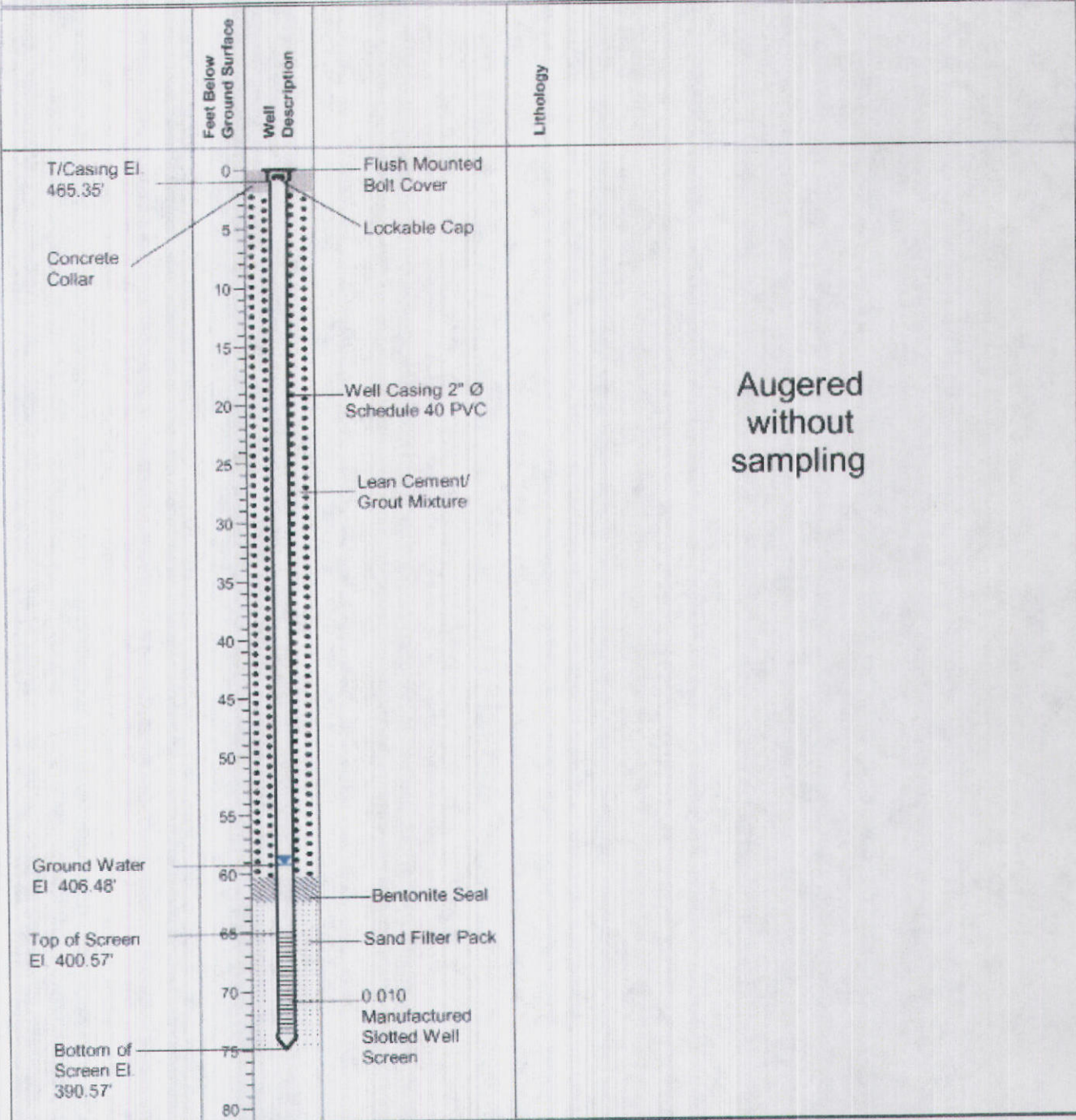


Drilling Contractor: Walker-Hill Environmental, Inc.
 Drilling Method: Rotary Auger & Mud Auger
 Drilling Equipment: Rotary Auger
 Drilling Started: 7/9/2007
 Drilling Ended: 7/18/2007

DRAFT

Project: Groundwater Assessment
 Location: Crystal Springs, MS
 Client: BorgWarner, Inc.
 Reviewed By: S. Spinner

Well Number: MW-12
 Coordinates: E- 2289400.57 N- 906172.27
 Ground Surface: 465.66
 Logged By: Chuck Peel

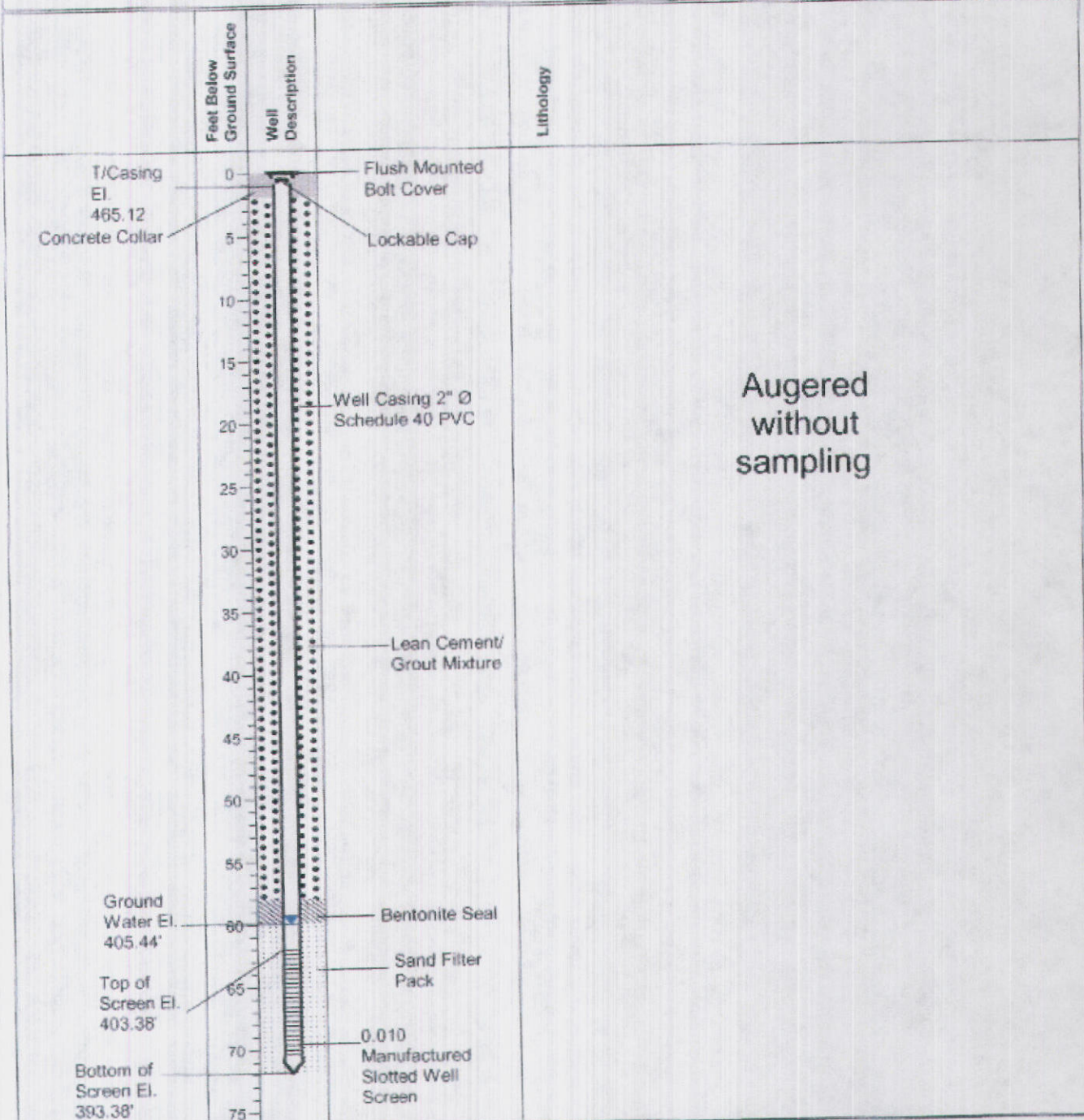


Drilling Contractor: Walker-Hill Environmental, Inc.
 Drilling Method: Rotary Auger & Mud Auger
 Drilling Equipment: Rotary Auger
 Drilling Started: 6/4/2007
 Drilling Ended: 6/4/2007

DRAFT

Project: Groundwater Assessment
 Location: Crystal Springs, MS
 Client: BorgWarner, Inc.
 Reviewed By: S. Spinner

Well Number: MW-13
 Coordinates: E- 2289570.85 N- 905167.38
 Ground Surface: 465.38
 Logged By: Chuck Peel

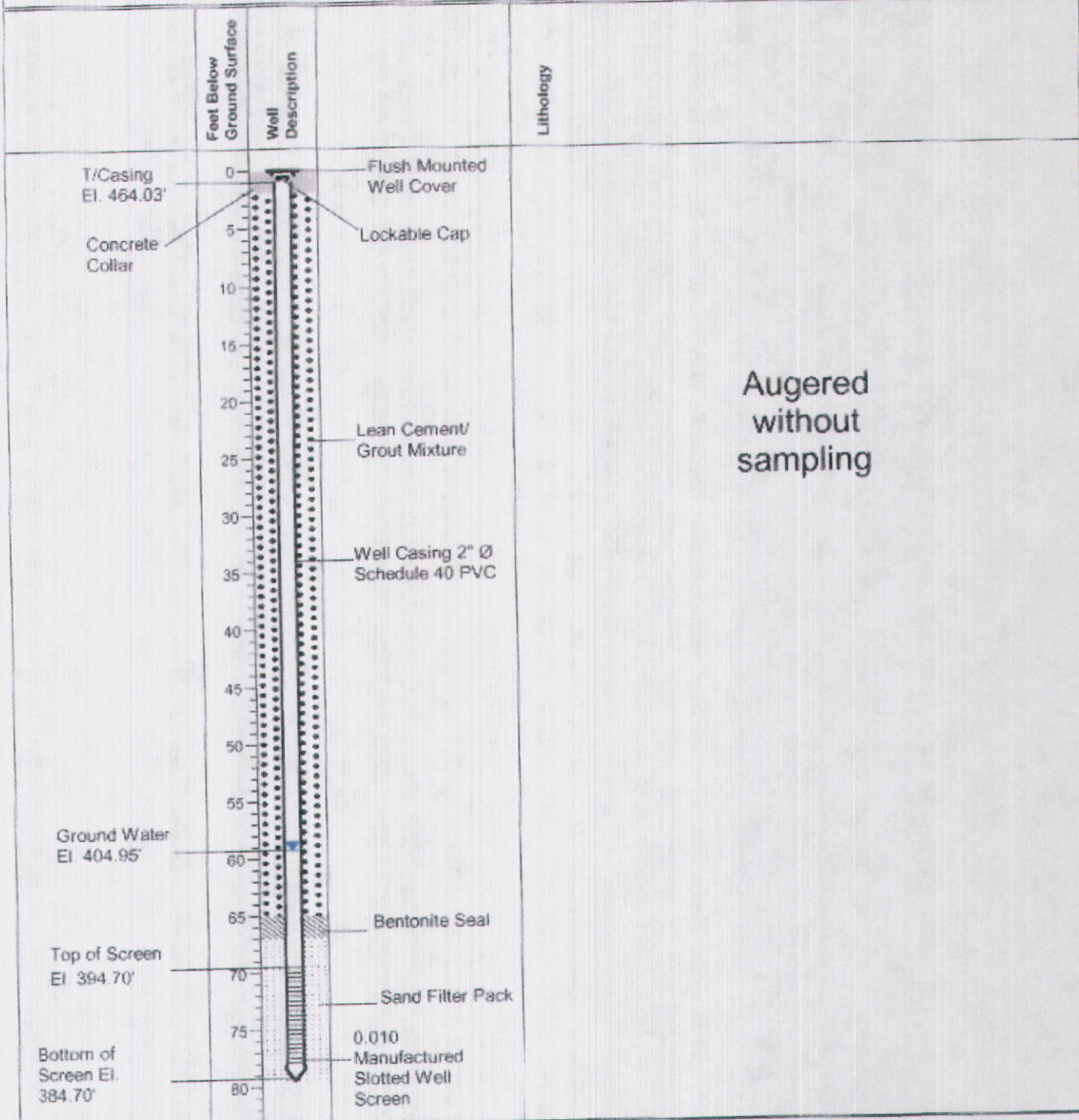


Drilling Contractor: Walker-Hill Environmental, Inc.
 Drilling Method: Rotary Auger & Mud Auger
 Drilling Equipment: Rotary Auger
 Drilling Started: 7/7/2007
 Drilling Ended: 7/7/2007

DRAFT

Project: Groundwater Assessment
 Location: Crystal Springs, MS
 Client: BorgWarner, Inc.
 Reviewed By: S. Spinner

Well Number: MW-14A
 Coordinates: E- 228892.25 N- 904792.79
 Ground Surface: 464.20
 Logged By: Chuck Peel

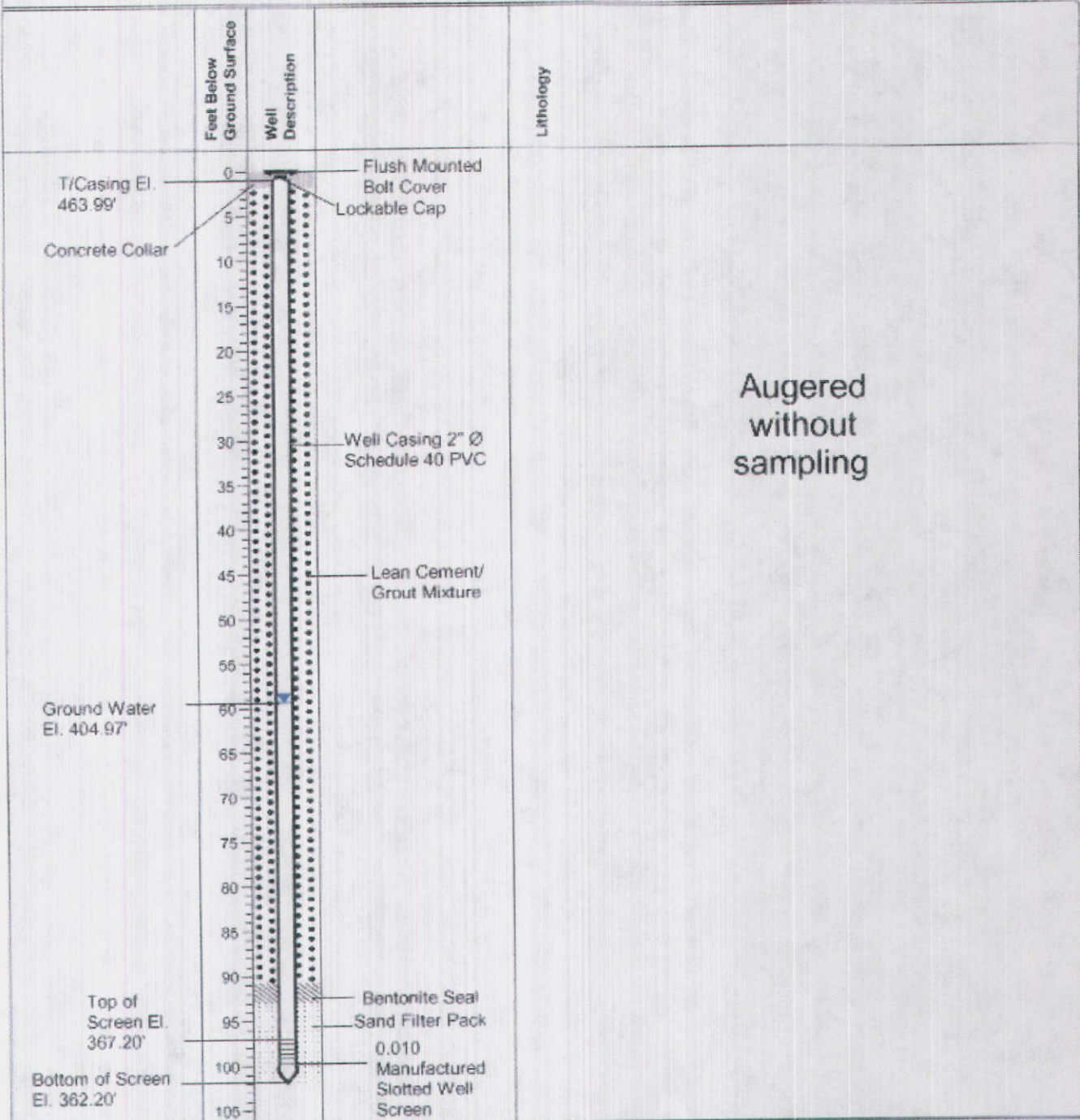


Drilling Contractor: Walker-Hill Environmental, Inc.
 Drilling Method: Rotary Auger & Mud Auger
 Drilling Equipment: Rotary Auger
 Drilling Started: 6/8/2007
 Drilling Ended: 6/8/2007

DRAFT

Project: Groundwater Assessment
 Location: Crystal Springs, MS
 Client: BorgWarner, Inc.
 Reviewed By: S. Spinner

Well Number: MW-14B
 Coordinates: E- 2288921.69 N- 904795.11
 Ground Surface: 464.20
 Logged By: Chuck Peel

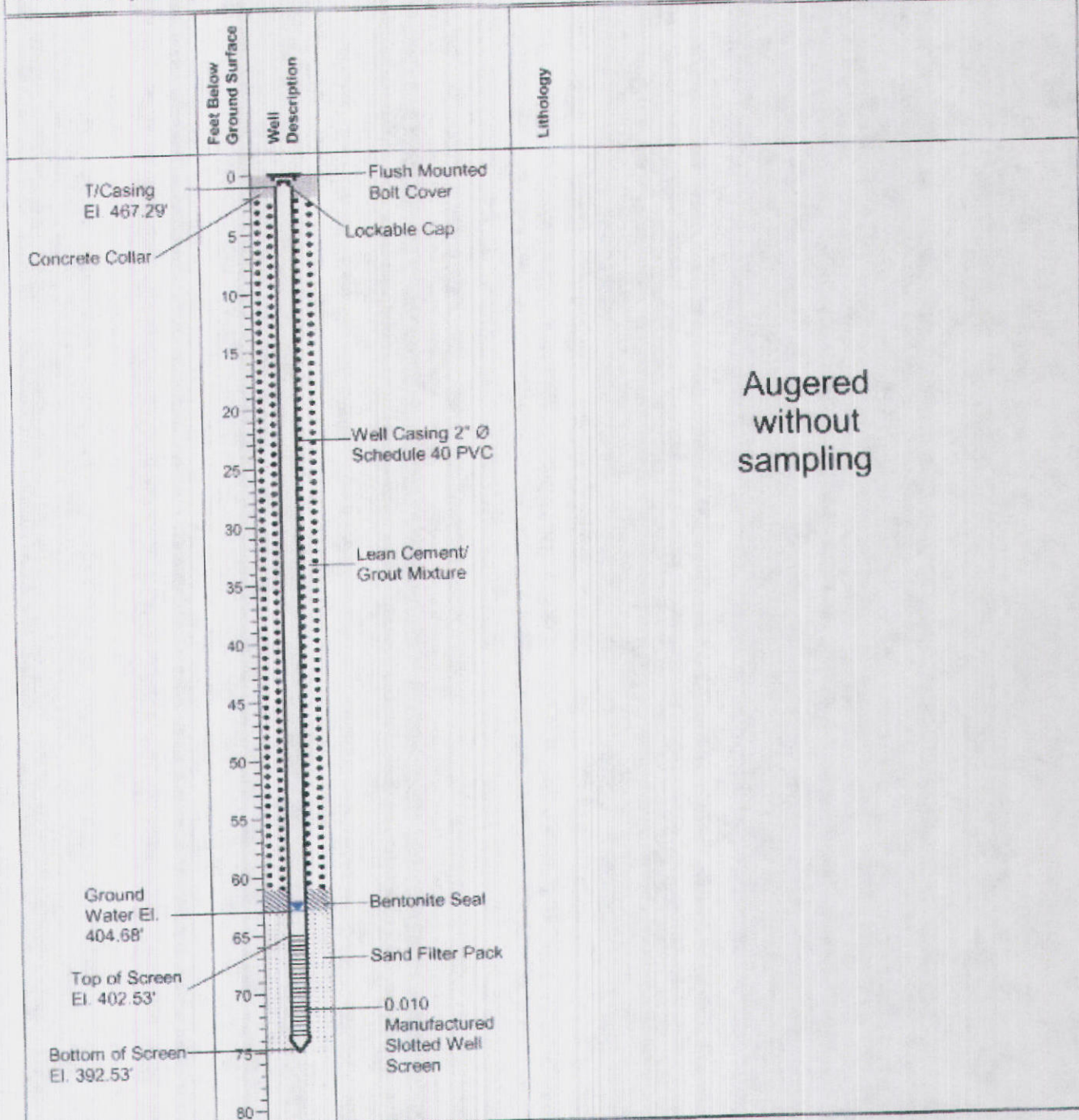


Drilling Contractor: Walker-Hill Environmental, Inc.
 Drilling Method: Rotary Auger & Mud Auger
 Drilling Equipment: Rotary Auger
 Drilling Started: 6/11/2007
 Drilling Ended: 6/11/2007

DRAFT

Project: Groundwater Assessment
 Location: Crystal Springs, MS
 Client: BorgWarner, Inc.
 Reviewed By: S. Spinner

Well Number: MW-15A
 Coordinates: E- 2288523.07 N- 905002.74
 Ground Surface: 467.53
 Logged By: Chuck Peel

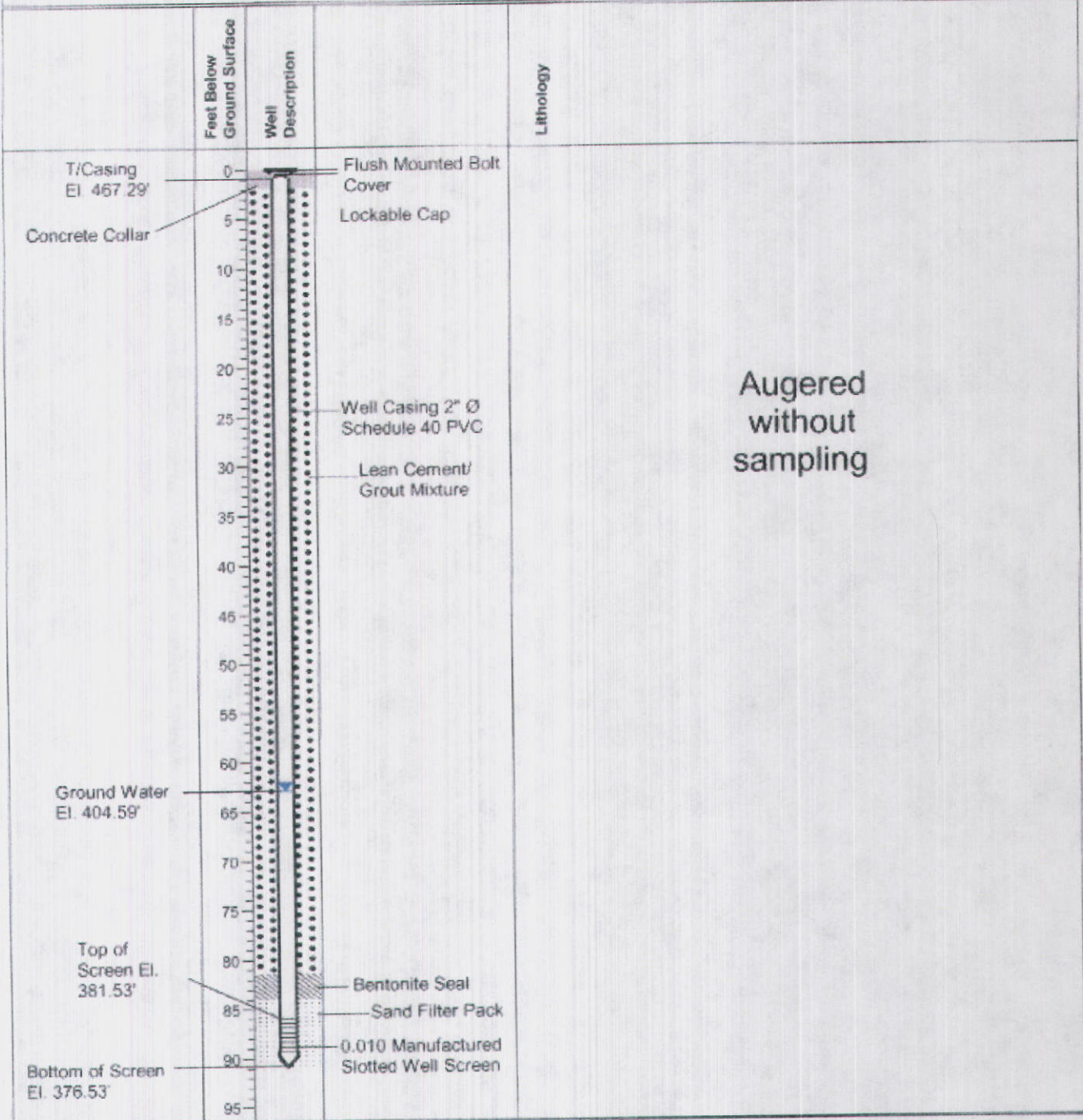


Drilling Contractor: Walker-Hill Environmental, Inc.
 Drilling Method: Rotary Auger & Mud Auger
 Drilling Equipment: Rotary Auger
 Drilling Started: 6/18/2007
 Drilling Ended: 6/18/2007



Project: Groundwater Assessment
 Location: Crystal Springs, MS
 Client: BorgWarner, Inc.
 Reviewed By: S. Spinner

Well Number: MW-15B
 Coordinates: E- 2288529.38 N- 905000.05
 Ground Surface: 467.53
 Logged By: Chuck Peel

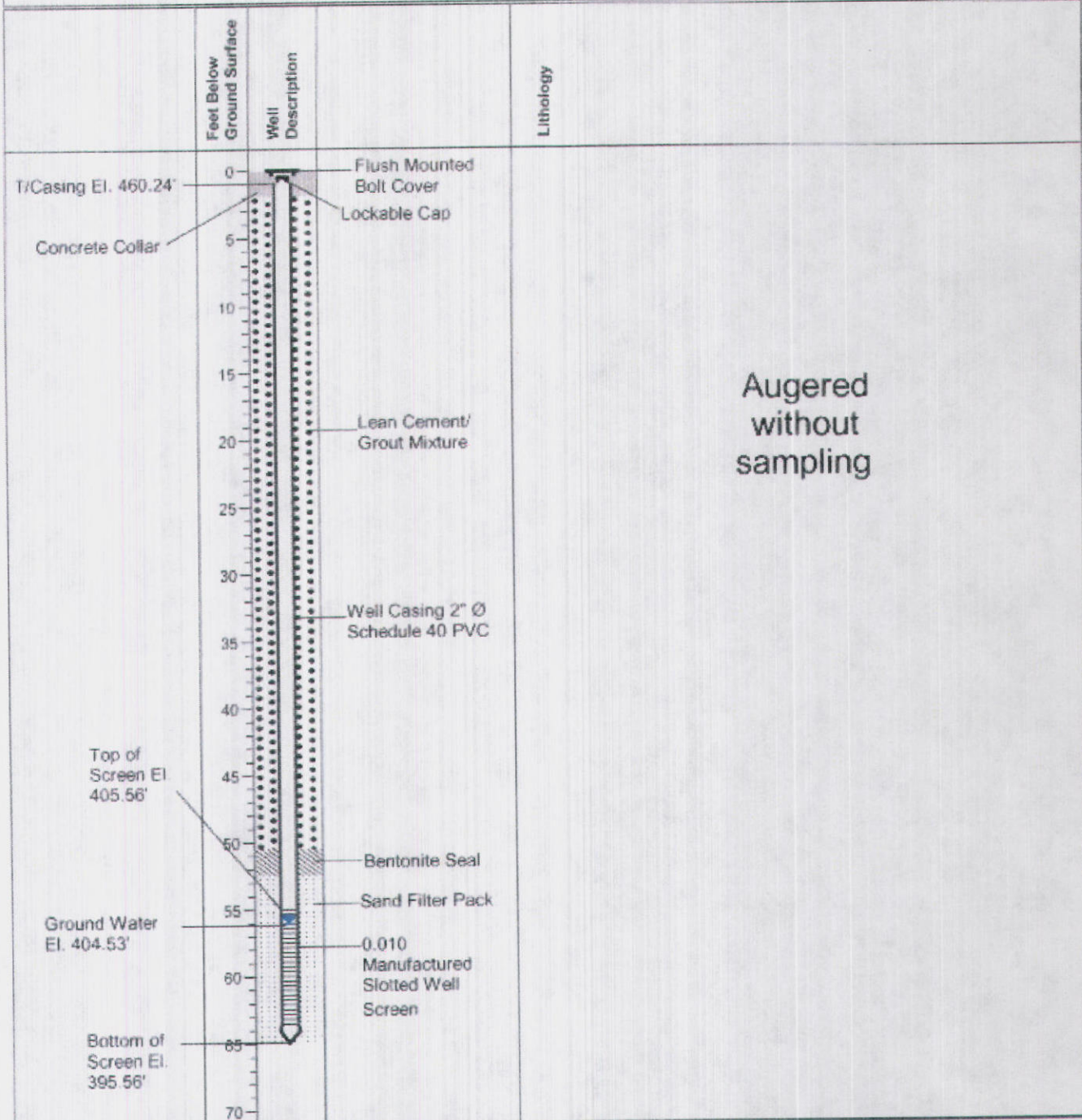


Drilling Contractor: Walker-Hill Environmental, Inc.
 Drilling Method: Rotary Auger & Mud Auger
 Drilling Equipment: Rotary Auger
 Drilling Started: 6/20/2007
 Drilling Ended: 6/20/2007

DRAFT

Project: Groundwater Assessment
 Location: Crystal Springs, MS
 Client: BorgWarner, Inc.
 Reviewed By: S. Spinner

Well Number: MW-16
 Coordinates: E- 2288330.26 N- 905631.43
 Ground Surface: 460.56
 Logged By: Chuck Peel

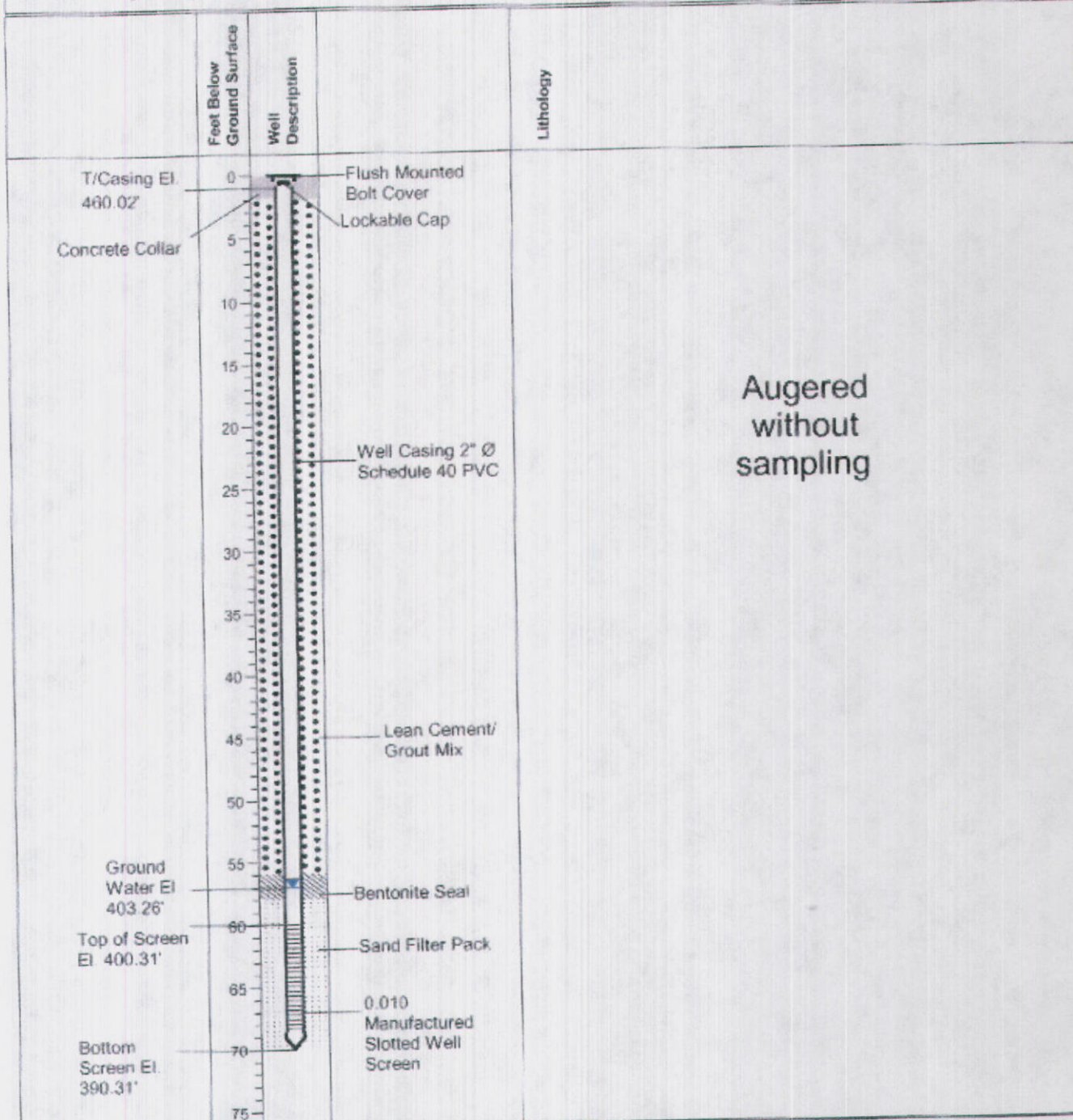


Drilling Contractor: Walker-Hill Environmental, Inc.
 Drilling Method: Rotary Auger & Mud Auger
 Drilling Equipment: Rotary Auger
 Drilling Started: 6/5/2007
 Drilling Ended: 6/5/2007

DRA

Project: Groundwater Assessment
 Location: Crystal Springs, MS
 Client: BorgWarner, Inc.
 Reviewed By: S. Spinner

Well Number: MW-17A
 Coordinates: E- 2288006.27 N- 905269.12
 Ground Surface: 460.31
 Logged By: Chuck Peel

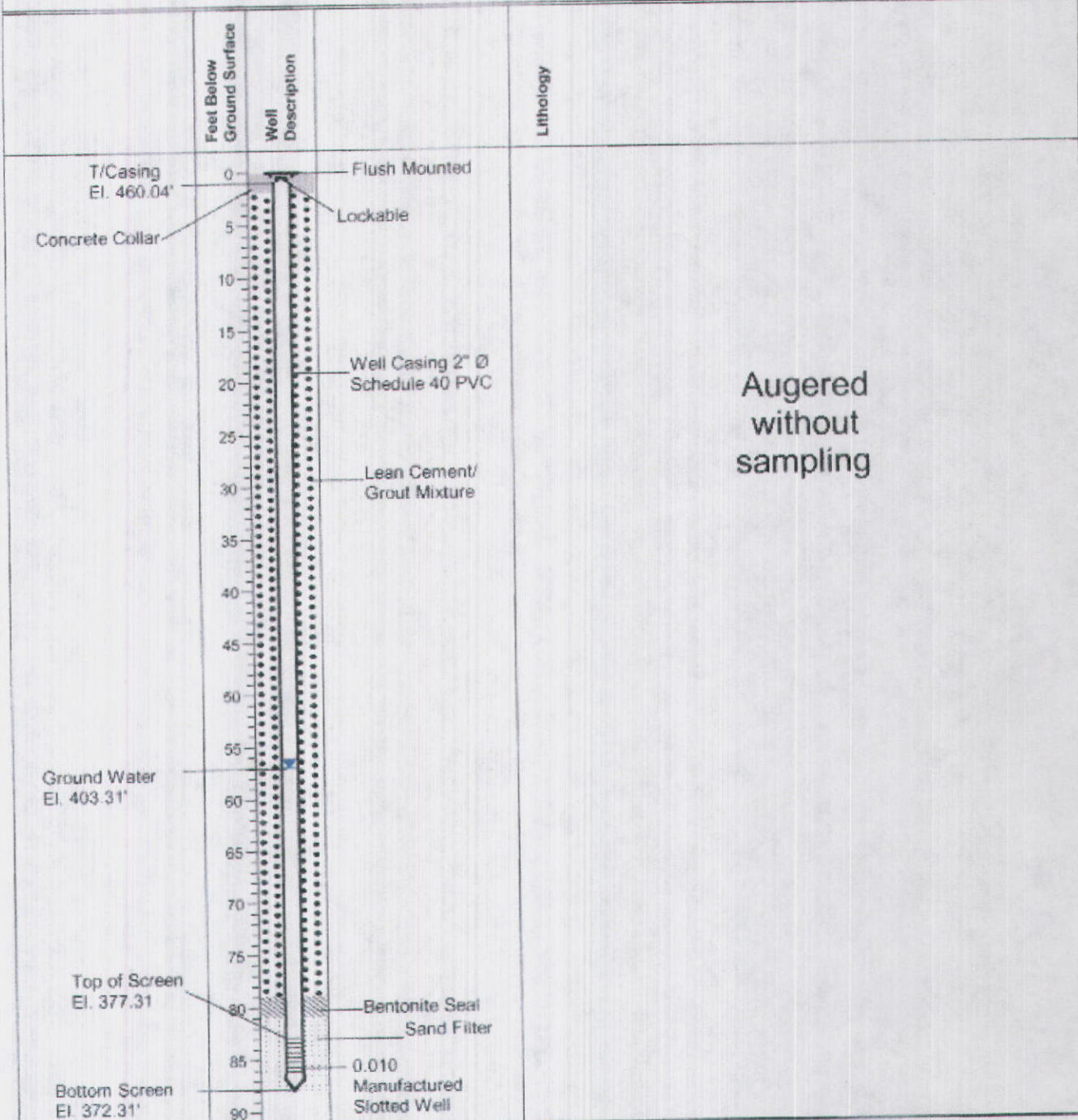


Drilling Contractor: Walker-Hill Environmental, Inc.
 Drilling Method: Rotary Auger & Mud Auger
 Drilling Equipment: Rotary Auger
 Drilling Started: 6/28/2007
 Drilling Ended: 6/28/2007

DRAFT

Project: Groundwater Assessment
 Location: Crystal Springs, MS
 Client: BorgWarner, Inc.
 Reviewed By: S. Spinner

Well Number: MW-17B
 Coordinates: E- 2288013.03 N- 905265.88
 Ground Surface: 460.31
 Logged By: Chuck Peel

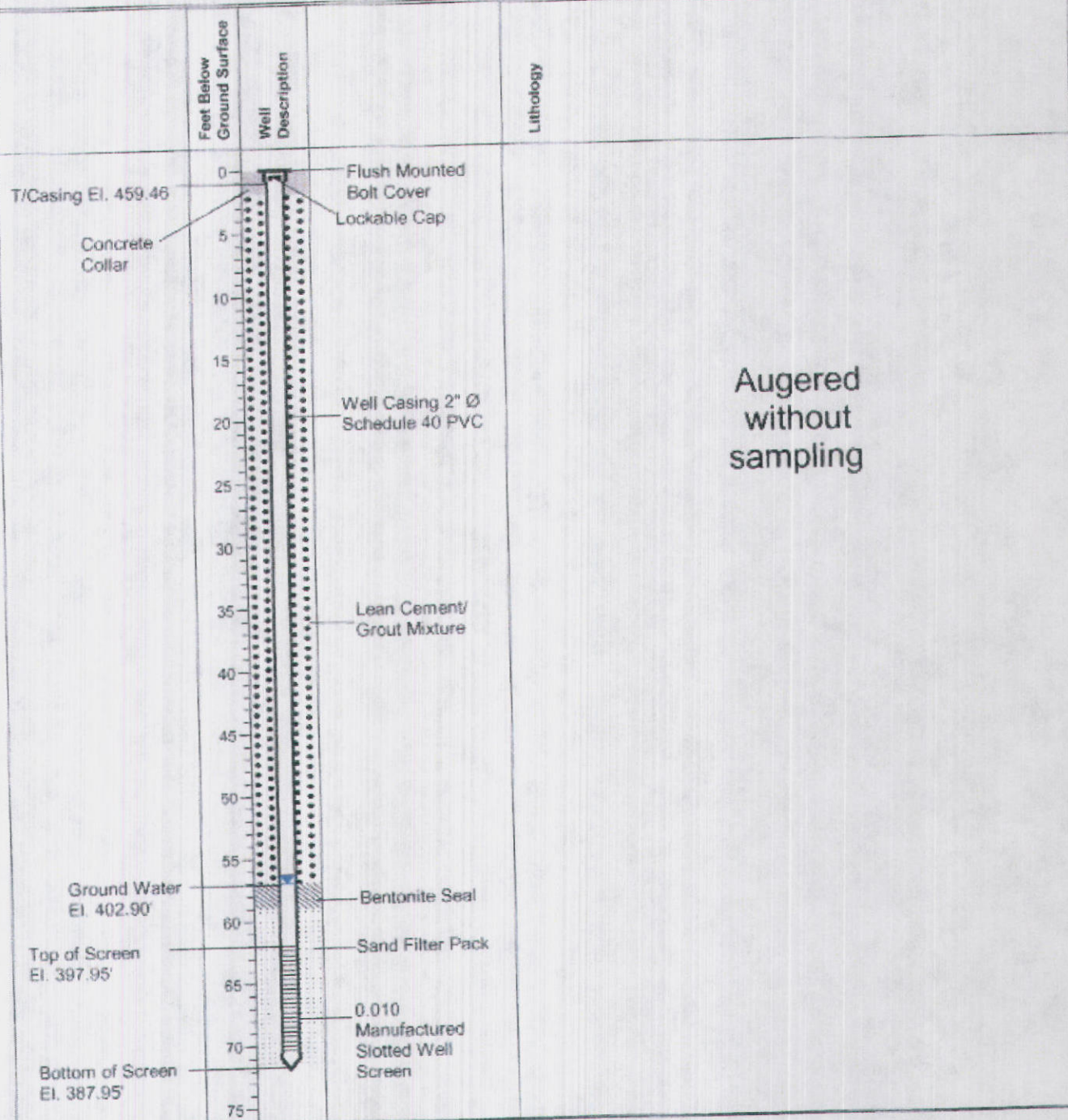


Drilling Contractor: Walker-Hill Environmental, Inc.
 Drilling Method: Rotary Auger & Mud Auger
 Drilling Equipment: Rotary Auger
 Drilling Started: 6/28/2007
 Drilling Ended: 6/28/2007

DRAFT

Project: Groundwater Assessment
 Location: Crystal Springs, MS
 Client: BorgWarner, Inc.
 Reviewed By: S. Spinner

Well Number: MW-18A
 Coordinates: E- 2287234.60 N- 905645.75
 Ground Surface: 459.95
 Logged By: Chuck Peel

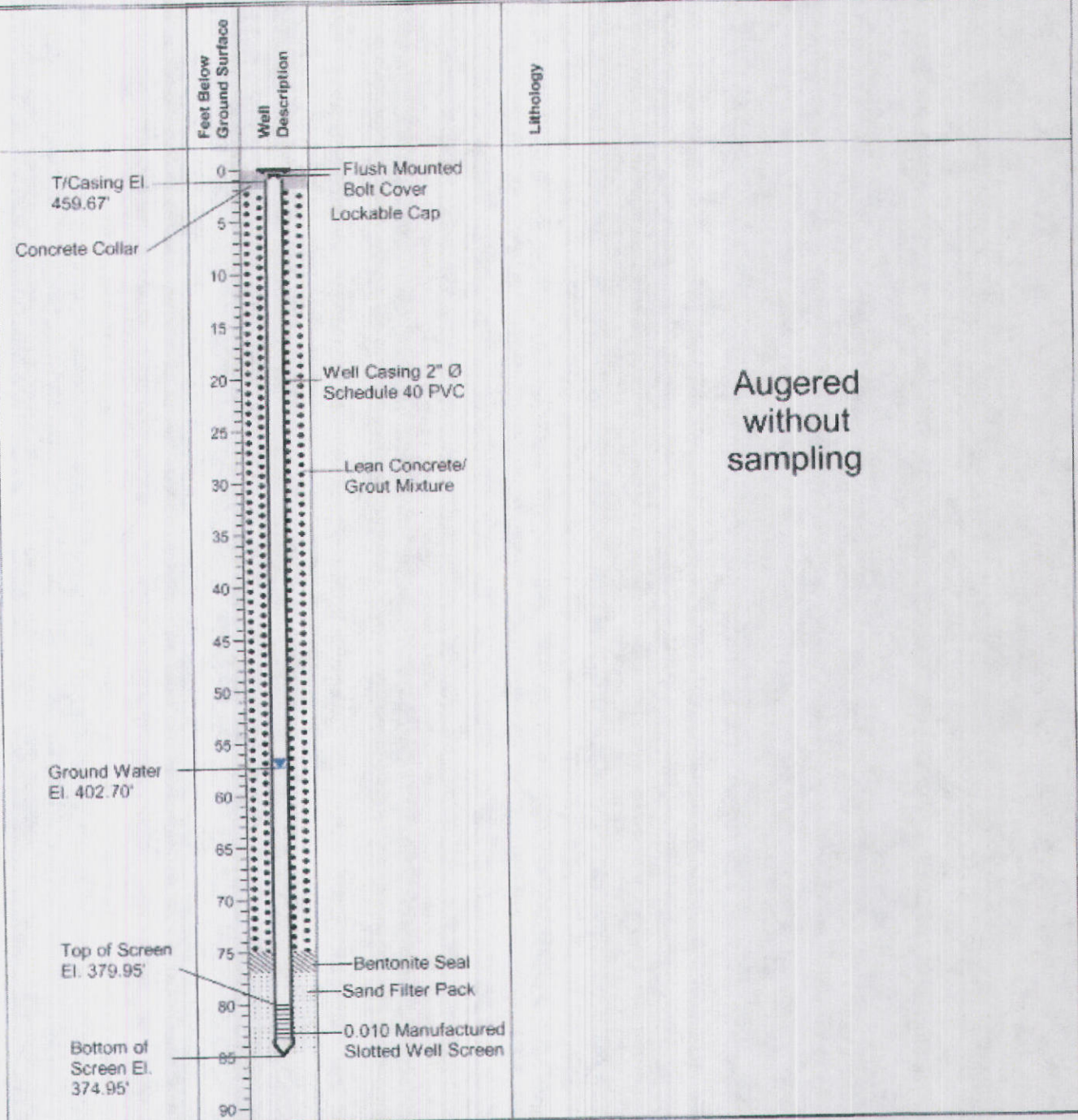


Drilling Contractor: Walker-Hill Environmental, Inc.
 Drilling Method: Rotary Auger & Mud Auger
 Drilling Equipment: Rotary Auger
 Drilling Started: 6/25/2007
 Drilling Ended: 6/25/2007

DRAFT

Project: Groundwater Assessment
 Location: Crystal Springs, MS
 Client: BorgWarner, Inc.
 Reviewed By: S. Spinner

Well Number: MW-18B
 Coordinates: E- 2287239.22 N- 905640.98
 Ground Surface: 459.95
 Logged By: Chuck Peel

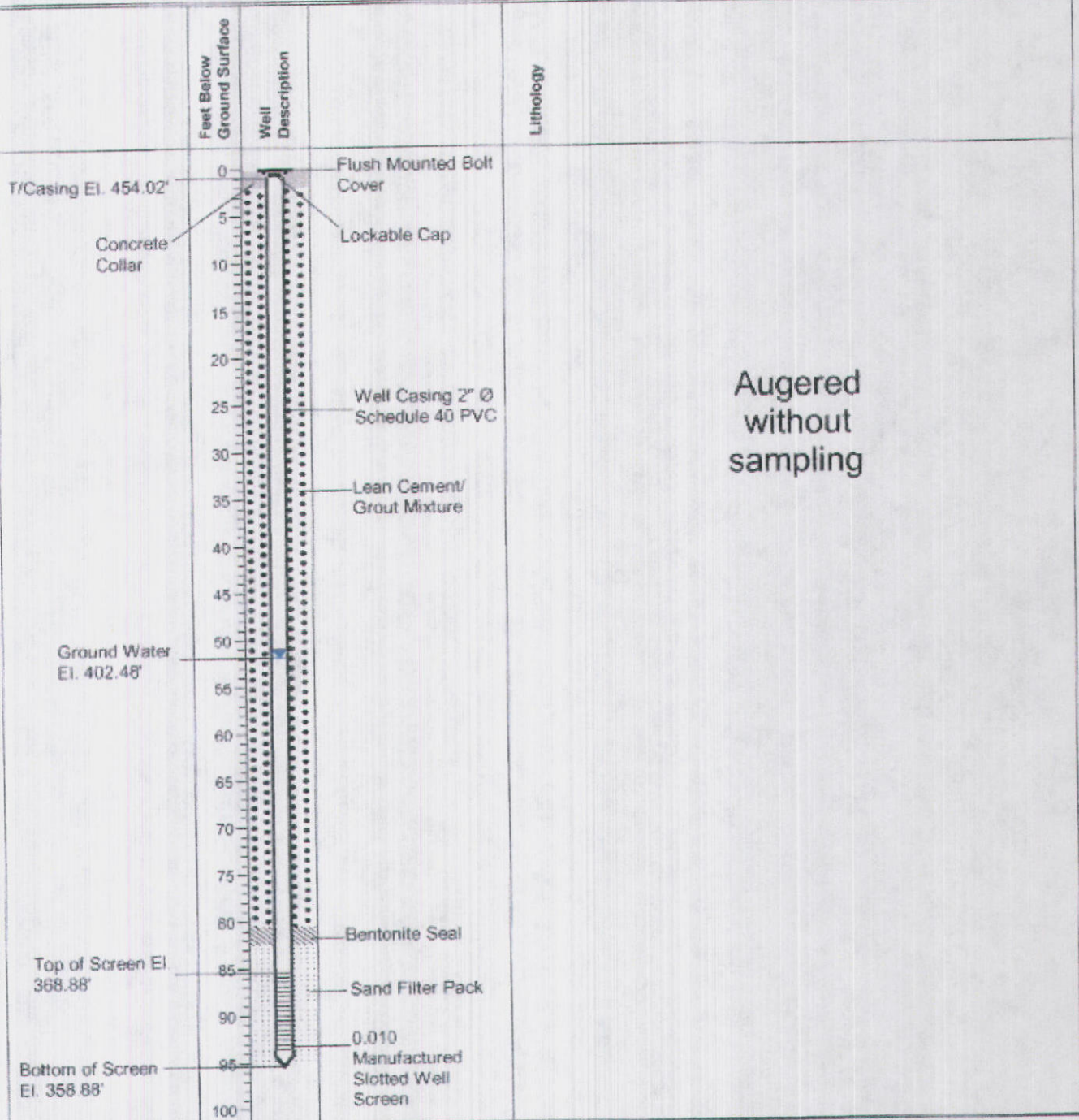


Drilling Contractor: Walker-Hill Environmental, Inc.
 Drilling Method: Rotary Auger & Mud Auger
 Drilling Equipment: Rotary Auger
 Drilling Started: 6/26/2007
 Drilling Ended: 6/26/2007

DRAFT

Project: Groundwater Assessment
 Location: Crystal Springs, MS
 Client: BorgWarner, Inc.
 Reviewed By: S. Spinner

Well Number: MW-19
 Coordinates: E- 2286848.43 N- 905960.22
 Ground Surface: 454.38
 Logged By: Chuck Peel

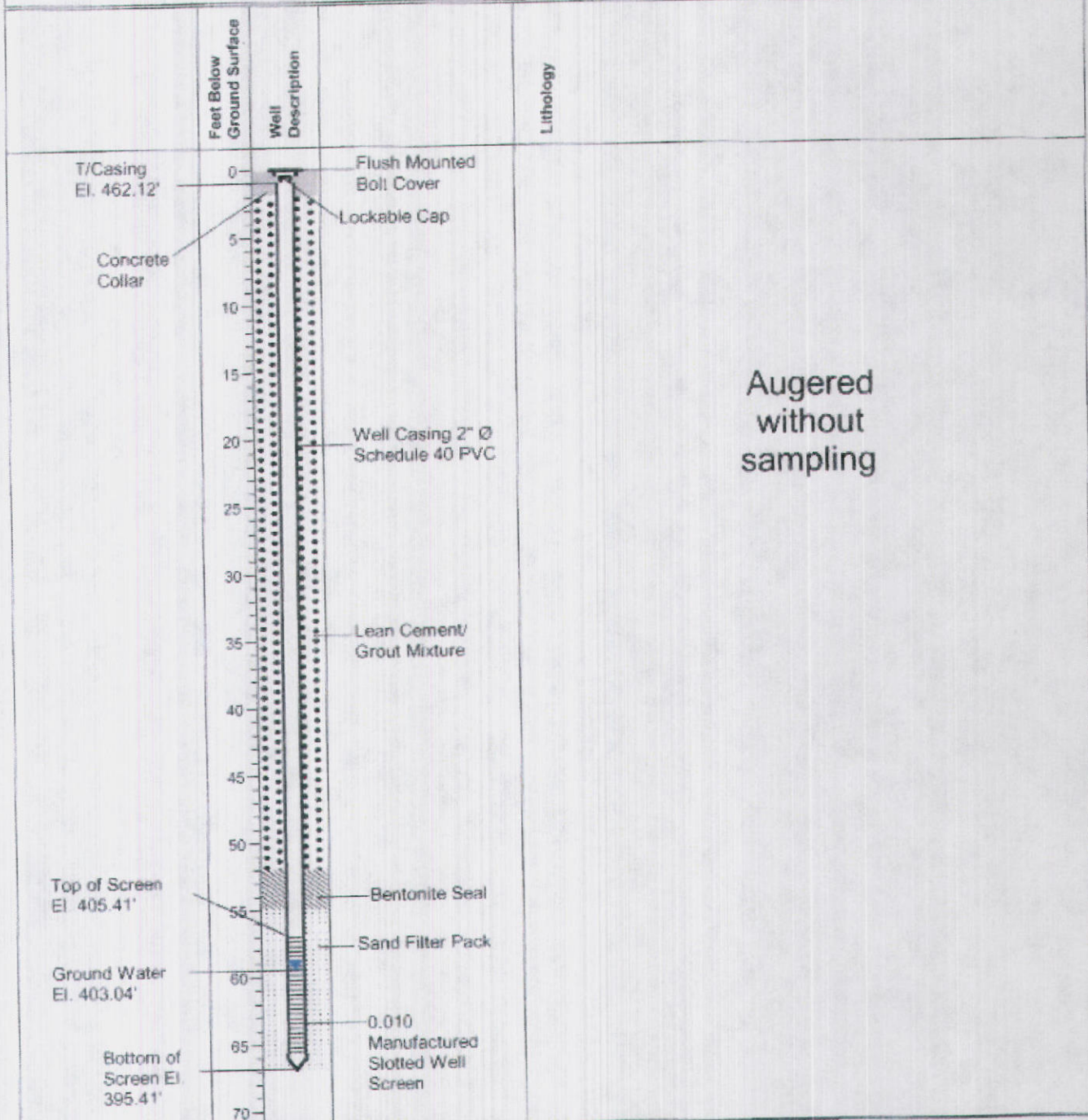


Drilling Contractor: Walker-Hill Environmental, Inc.
 Drilling Method: Rotary Auger & Mud Auger
 Drilling Equipment: Rotary Auger
 Drilling Started: 6/6/2007
 Drilling Ended: 6/6/2007

DRAFT

Project: Groundwater Assessment
 Location: Crystal Springs, MS
 Client: BorgWarner, Inc.
 Reviewed By: S. Spinner

Well Number: MW-20A
 Coordinates: E- 2287478.87 N- 904967.37
 Ground Surface: 462.41
 Logged By: Chuck Peel

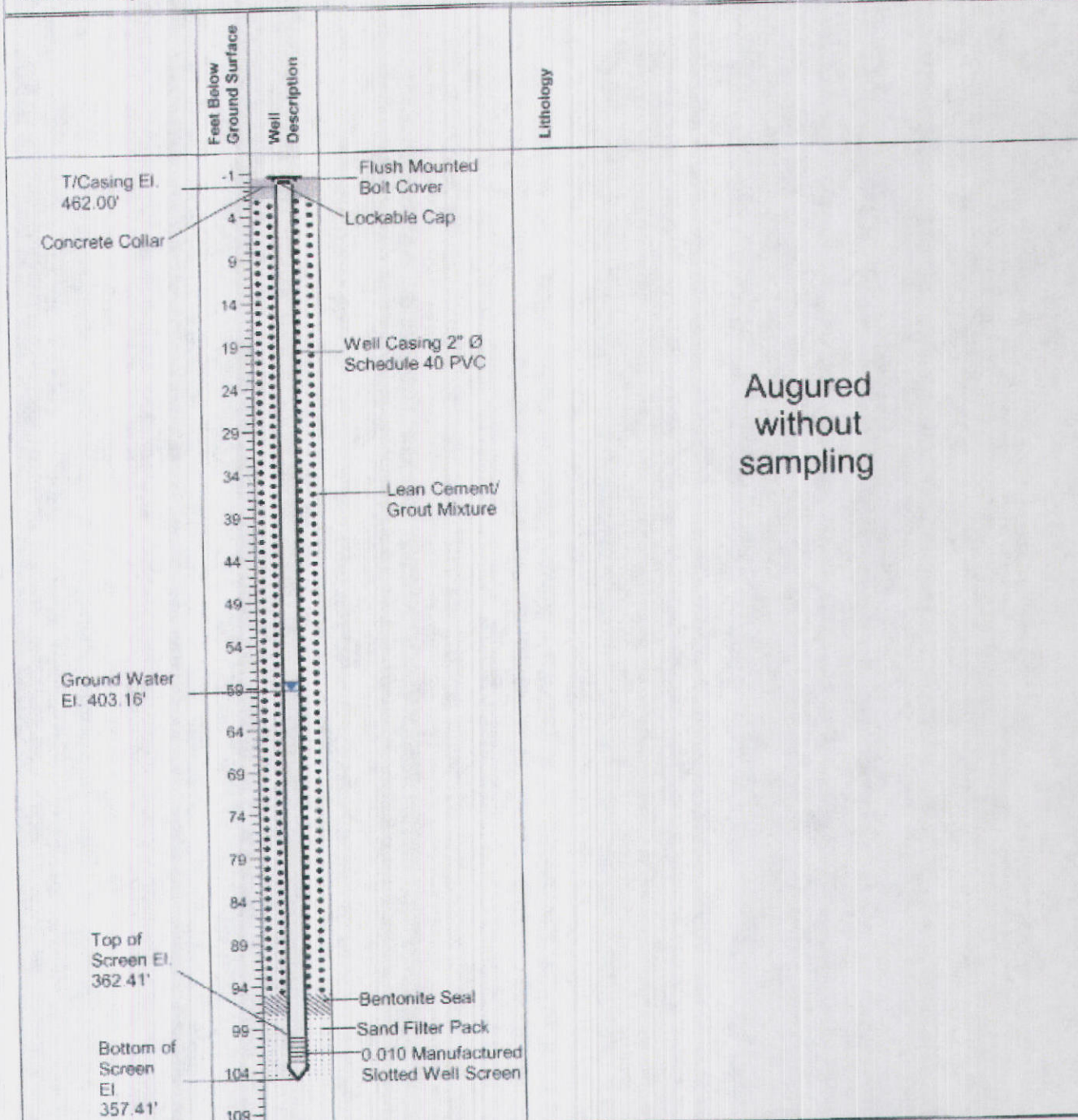


Drilling Contractor: Walker-Hill Environmental, Inc.
 Drilling Method: Rotary Auger & Mud Auger
 Drilling Equipment: Rotary Auger
 Drilling Started: 6/22/2007
 Drilling Ended: 6/22/2007

DRAFT

Project: Groundwater Assessment
 Location: Crystal Springs, MS
 Client: BorgWarner, Inc.
 Reviewed By: S. Spinner

Well Number: MW-20B
 Coordinates: E- 2287485.33 N- 904964.46
 Ground Surface: 462.41
 Logged By: Chuck Peel

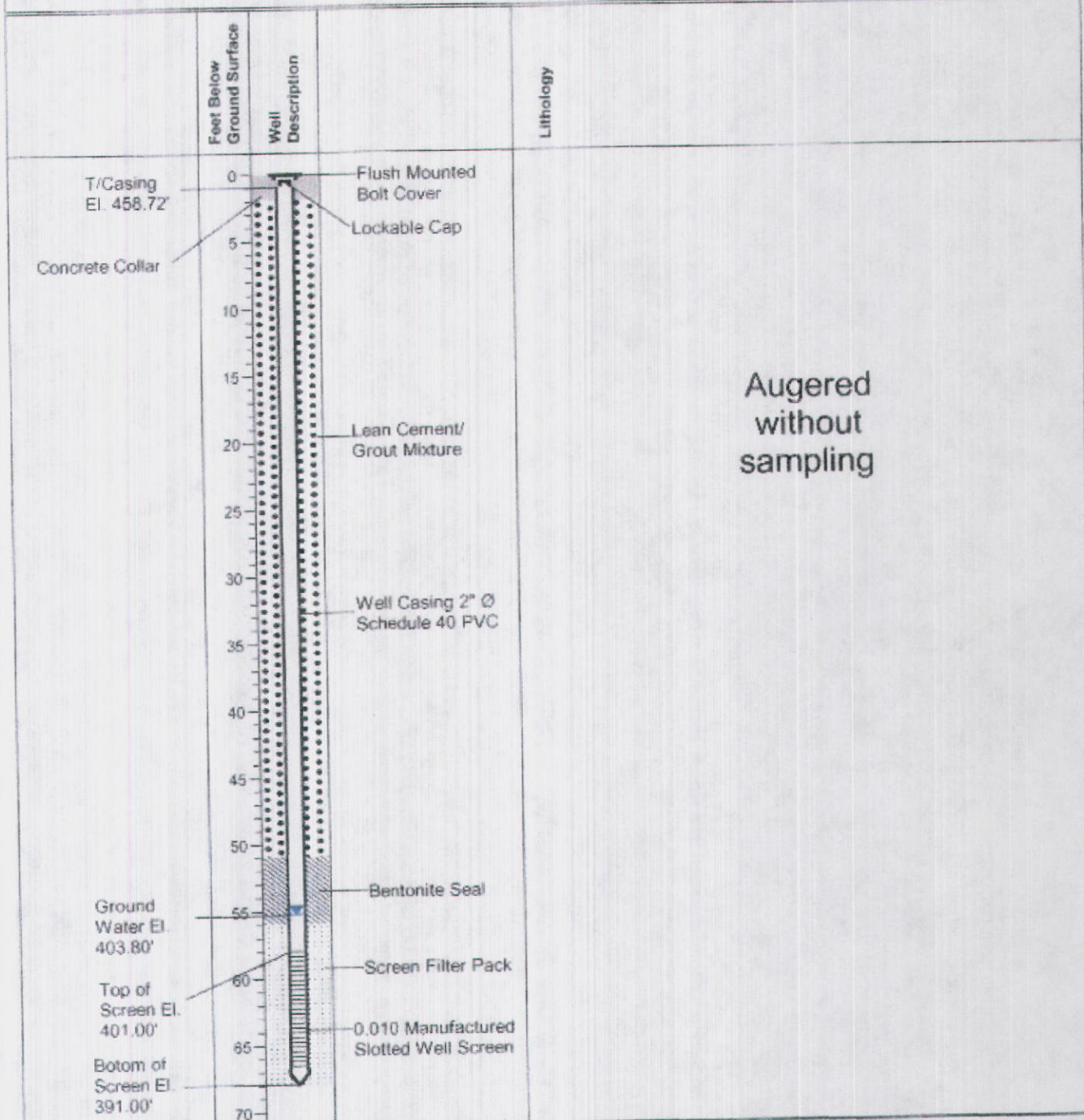


Drilling Contractor: Walker-Hill Environmental, Inc.
 Drilling Method: Rotary Auger & Mud Auger
 Drilling Equipment: Rotary Auger
 Drilling Started: 6/21/2007
 Drilling Ended: 6/21/2007

DRAFT

Project: Groundwater Assessment
 Location: Crystal Springs, MS
 Client: BorgWarner, Inc.
 Reviewed By: S. Spinner

Well Number: MW-21A
 Coordinates: E- 2288135.87 N- 904676.18
 Ground Surface: 458.00
 Logged By: Chuck Peel

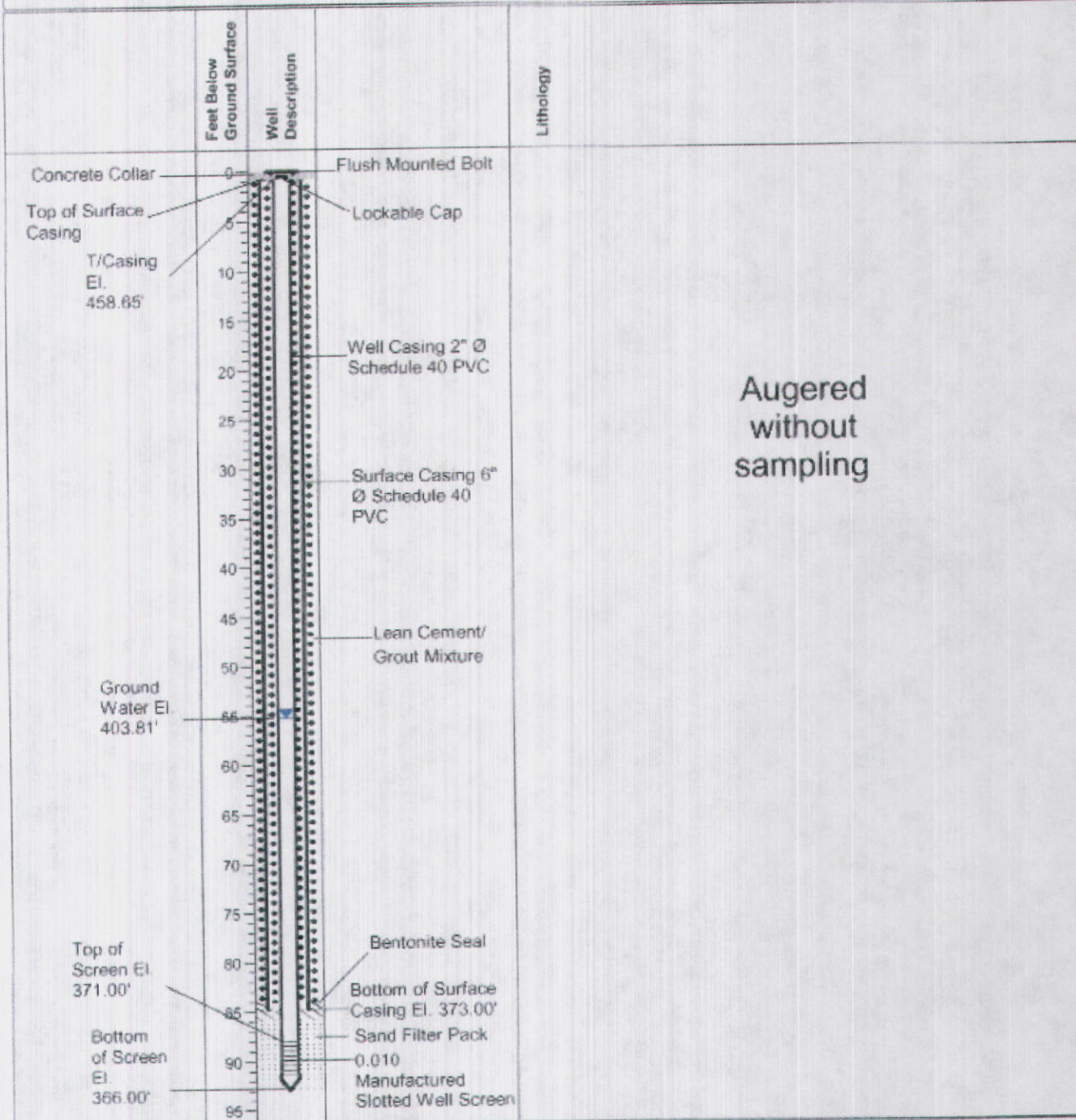


Drilling Contractor: Walker-Hill Environmental, Inc.
 Drilling Method: Rotary Auger & Mud Auger
 Drilling Equipment: Rotary Auger
 Drilling Started: 7/2/2007
 Drilling Ended: 7/2/2007

DRAFT

Project: Groundwater Assessment
 Location: Crystal Springs, MS
 Client: BorgWarner, Inc.
 Reviewed By: S. Spinner

Well Number: MW-21B
 Coordinates: E- 2288129.37 N- 904679.22
 Ground Surface: 459.00
 Logged By: Chuck Peel

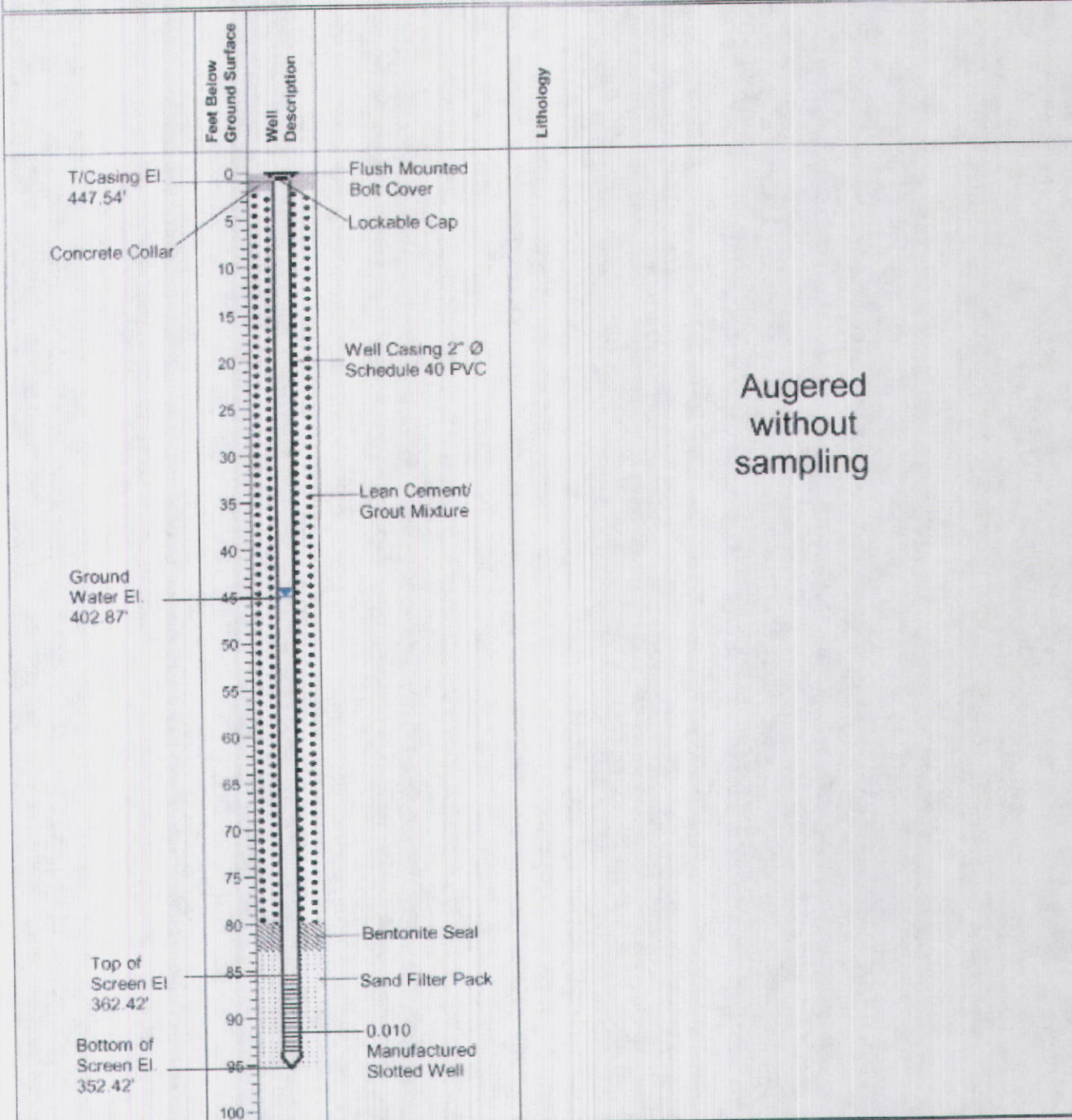


Drilling Contractor: Walker-Hill Environmental, Inc.
 Drilling Method: Rotary Auger & Mud Auger
 Drilling Equipment: Rotary Auger
 Drilling Started: 7/3/2007
 Drilling Ended: 7/16/2007

DRAFT

Project: Groundwater Assessment
 Location: Crystal Springs, MS
 Client: BorgWarner, Inc.
 Reviewed By: S. Spinner

Well Number: MW-22
 Coordinates: E- 2286757.99 N- 904576.75
 Ground Surface: 447.92
 Logged By: Chuck Peel

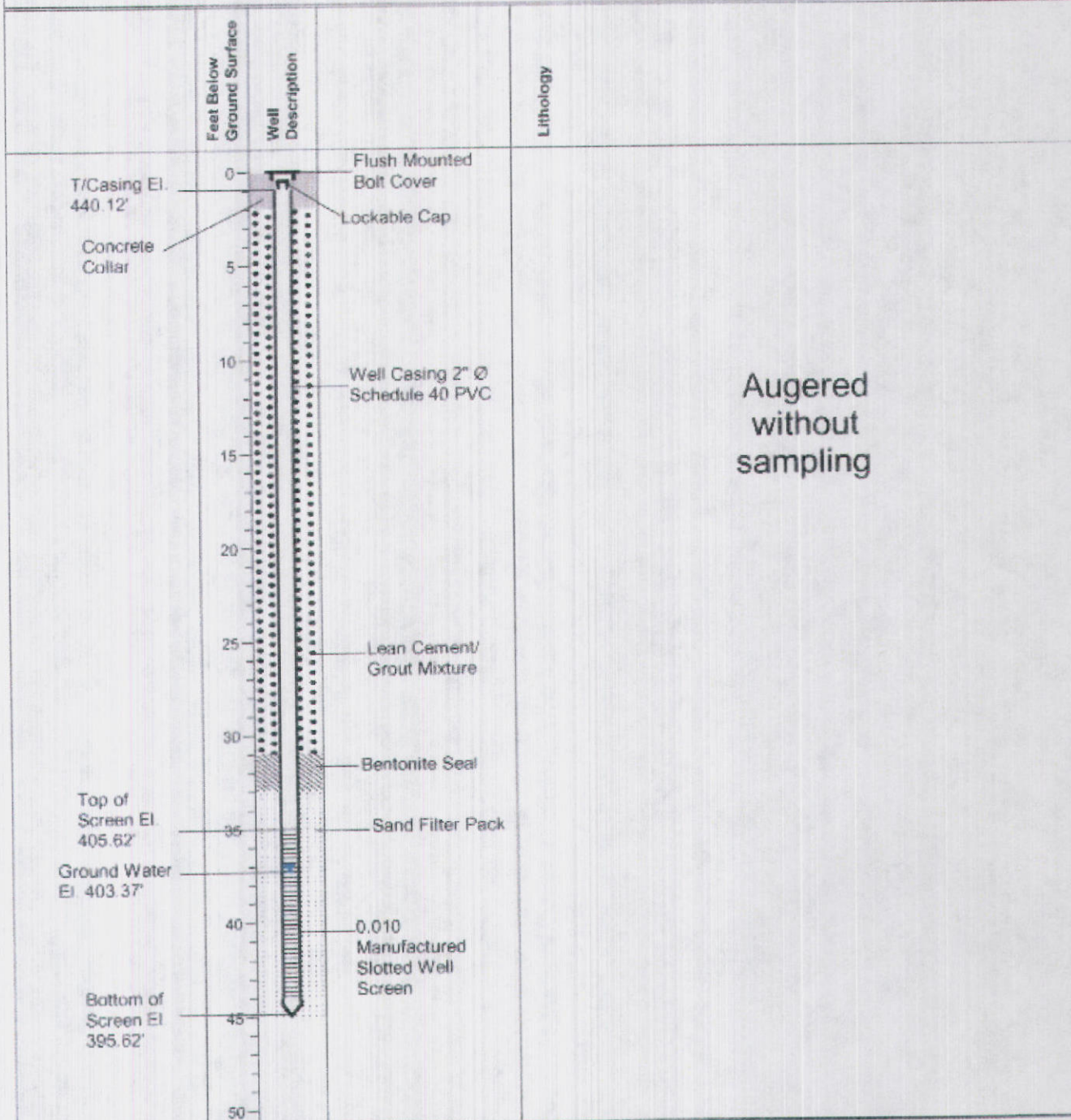


Drilling Contractor: Walker-Hill Environmental, Inc.
 Drilling Method: Rotary Auger & Mud Auger
 Drilling Equipment: Rotary Auger
 Drilling Started: 6/12/2007
 Drilling Ended: 6/12/2007

DRAFT

Project: Groundwater Assessment
 Location: Crystal Springs, MS
 Client: BorgWarner, Inc.
 Reviewed By: S. Spinner

Well Number: MW-23A
 Coordinates: E- 2287676.78 N- 904102.86
 Ground Surface: 440.62
 Logged By: Chuck Peel

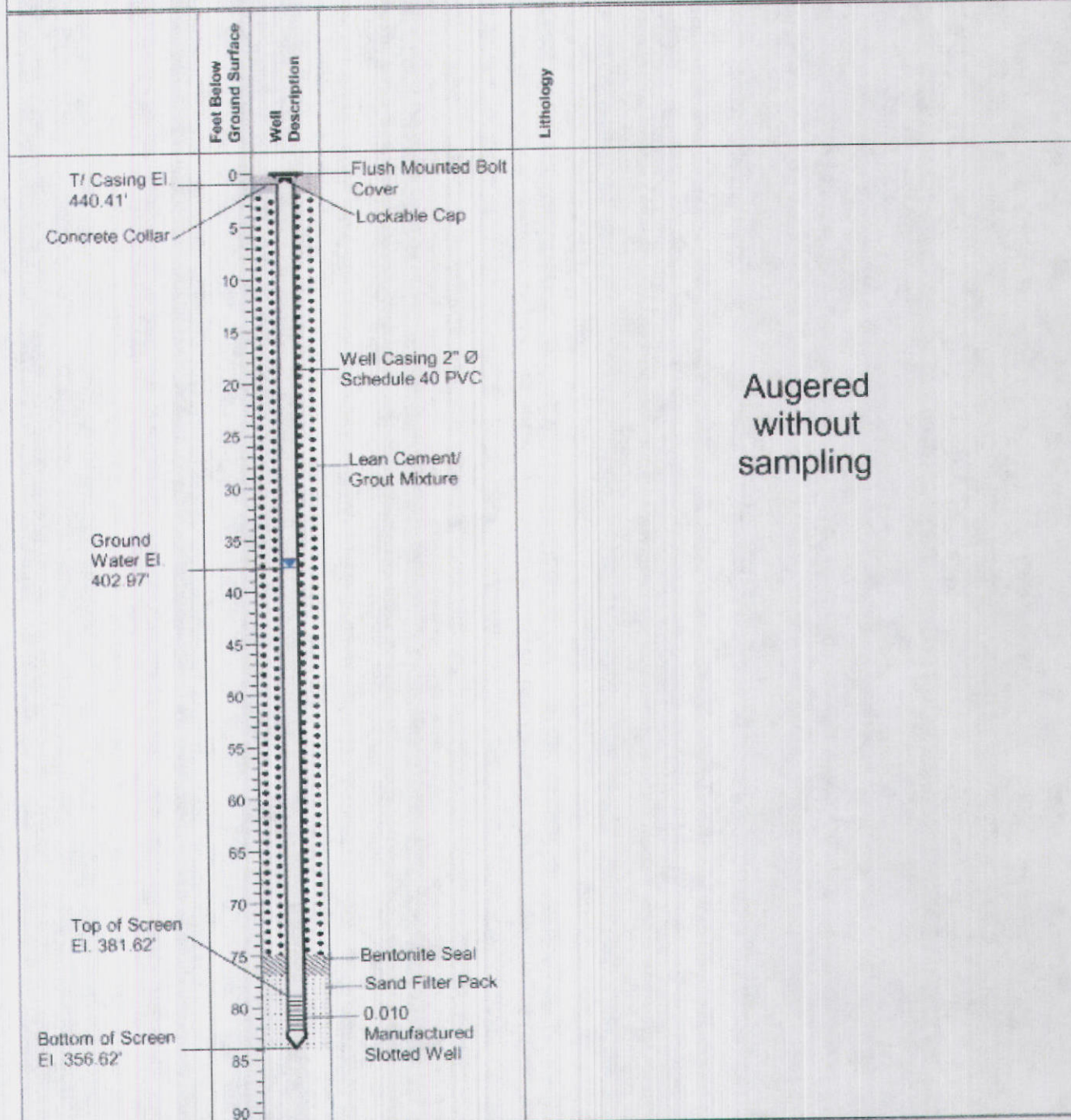


Drilling Contractor: Walker-Hill Environmental, Inc.
 Drilling Method: Rotary Auger & Mud Auger
 Drilling Equipment: Rotary Auger
 Drilling Started: 6/15/2007
 Drilling Ended: 6/15/2007

DRAFT

Project: Groundwater Assessment
 Location: Crystal Springs, MS
 Client: BorgWarner, Inc.
 Reviewed By: S. Spinner

Well Number: MW-23B
 Coordinates: E- 2287670.26 N- 904103.17
 Ground Surface: 440.62
 Logged By: Chuck Peel

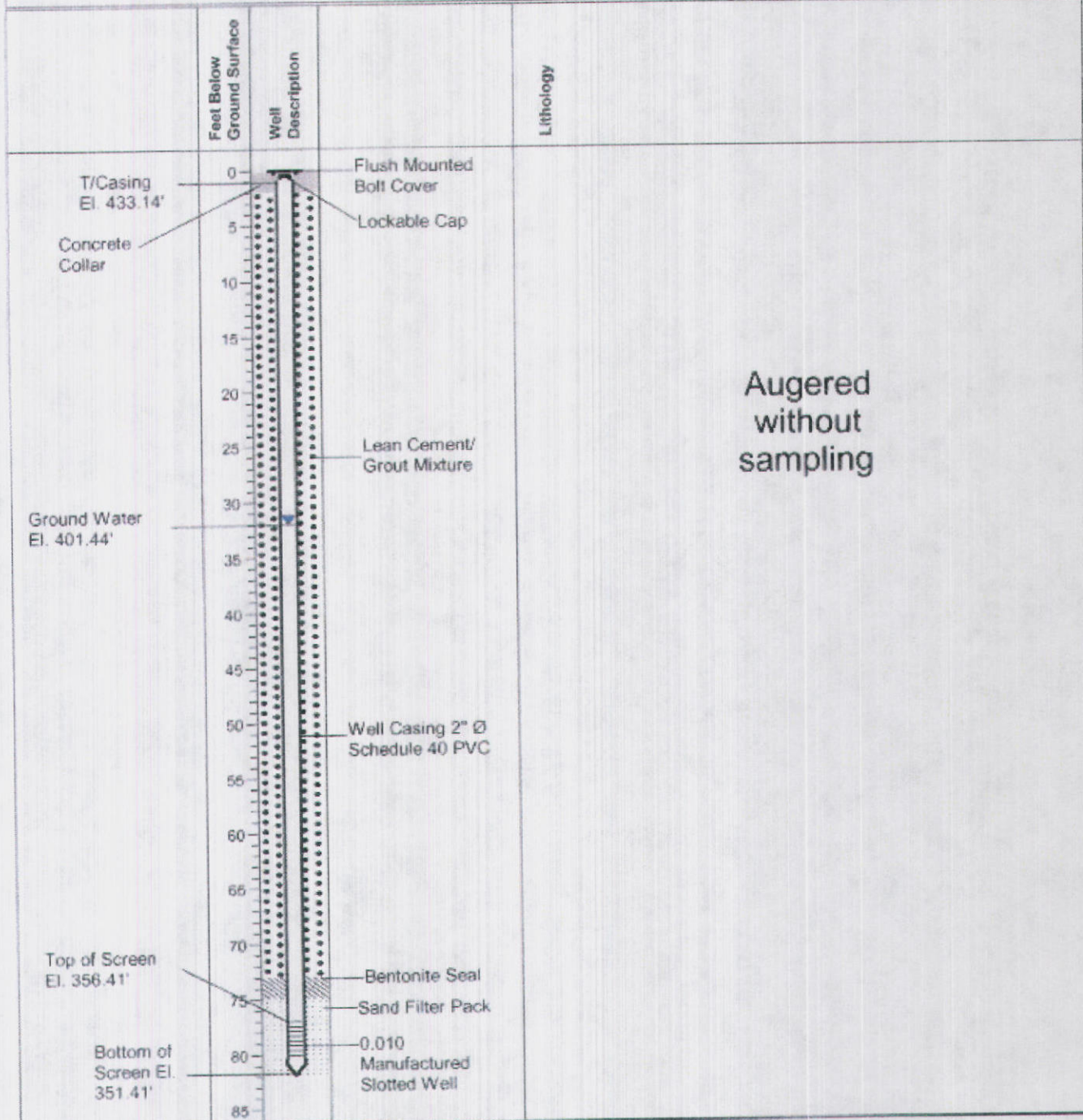


Drilling Contractor: Walker-Hill Environmental, Inc.
 Drilling Method: Rotary Auger & Mud Auger
 Drilling Equipment: Rotary Auger
 Drilling Started: 6/14/2007
 Drilling Ended: 6/14/2007

DRAFT

Project: Groundwater Assessment
 Location: Crystal Springs, MS
 Client: BorgWarner, Inc.
 Reviewed By: S. Spinner

Well Number: MW-24
 Coordinates: E- 2286816.73 N- 903581.39
 Ground Surface: 433.41
 Logged By: Chuck Peel

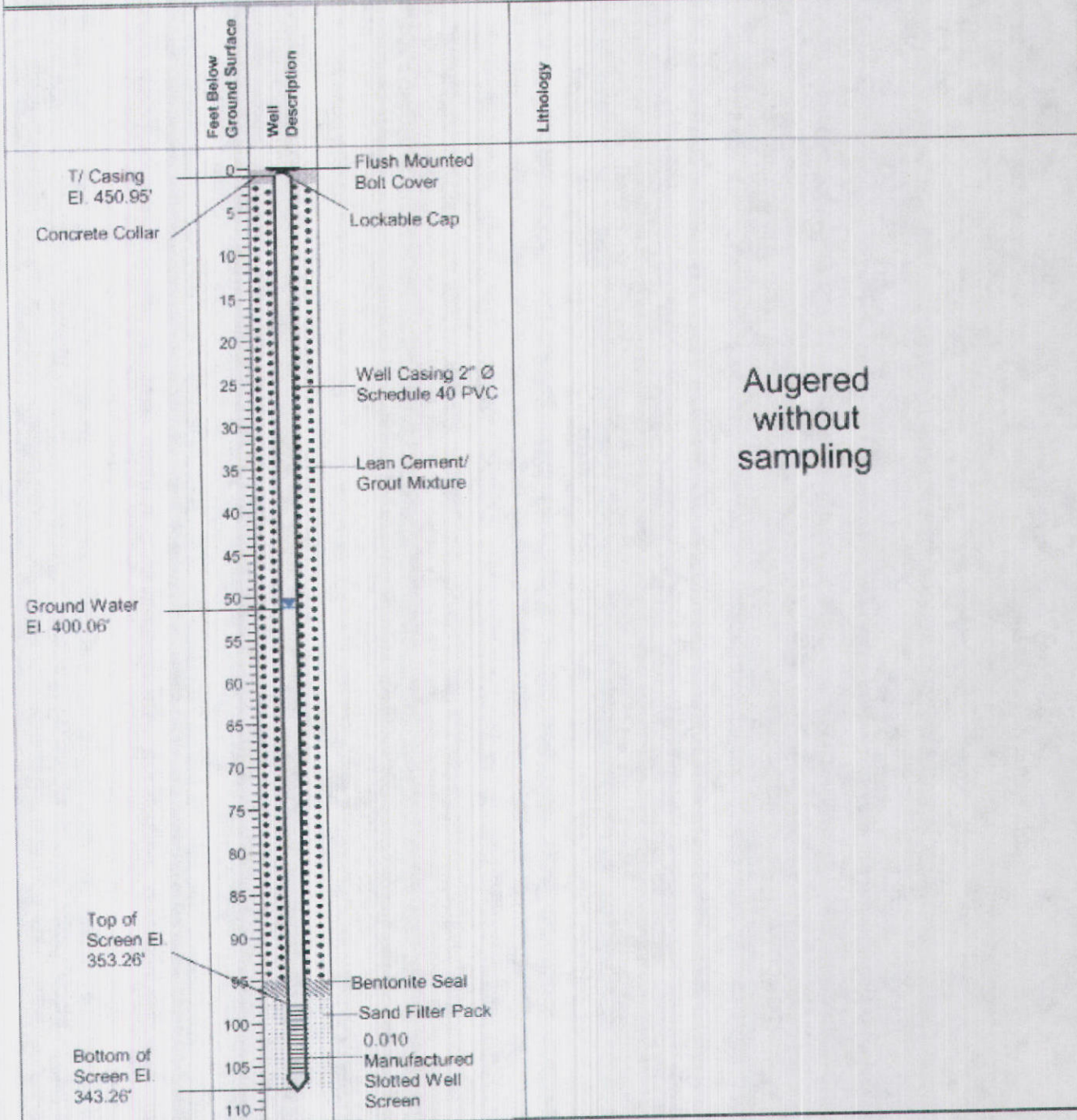


Drilling Contractor: Walker-Hill Environmental, Inc.
 Drilling Method: Rotary Auger & Mud Auger
 Drilling Equipment: Rotary Auger
 Drilling Started: 7/5/2007
 Drilling Ended: 7/5/2007

DRAFT

Project: Groundwater Assessment
 Location: Crystal Springs, MS
 Client: BorgWarner, Inc.
 Reviewed By: S. Spinner

Well Number: MW-25
 Coordinates: E- 2287832.40 N- 902801.60
 Ground Surface: 451.26
 Logged By: Chuck Peel

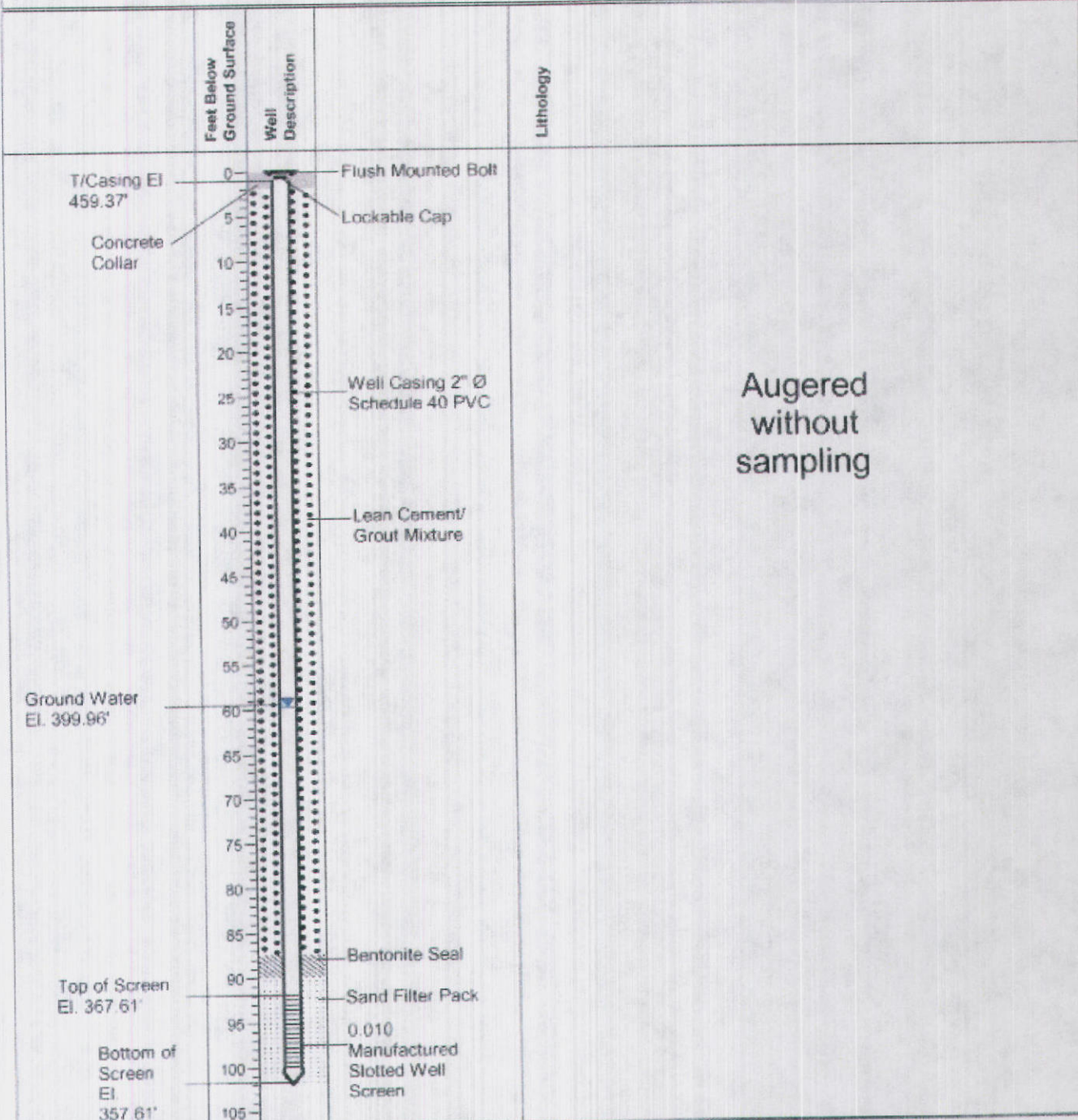


Drilling Contractor: Walker-Hill Environmental, Inc.
 Drilling Method: Rotary Auger & Mud Auger
 Drilling Equipment: Rotary Auger
 Drilling Started: 7/13/2007
 Drilling Ended: 7/13/2007

DRAFT

Project: Groundwater Assessment
 Location: Crystal Springs, MS
 Client: BorgWarner, Inc.
 Reviewed By: S. Spinner

Well Number: MW-26
 Coordinates: E- 2288229.07 N- 903092.89
 Ground Surface: 459.61
 Logged By: Chuck Peel

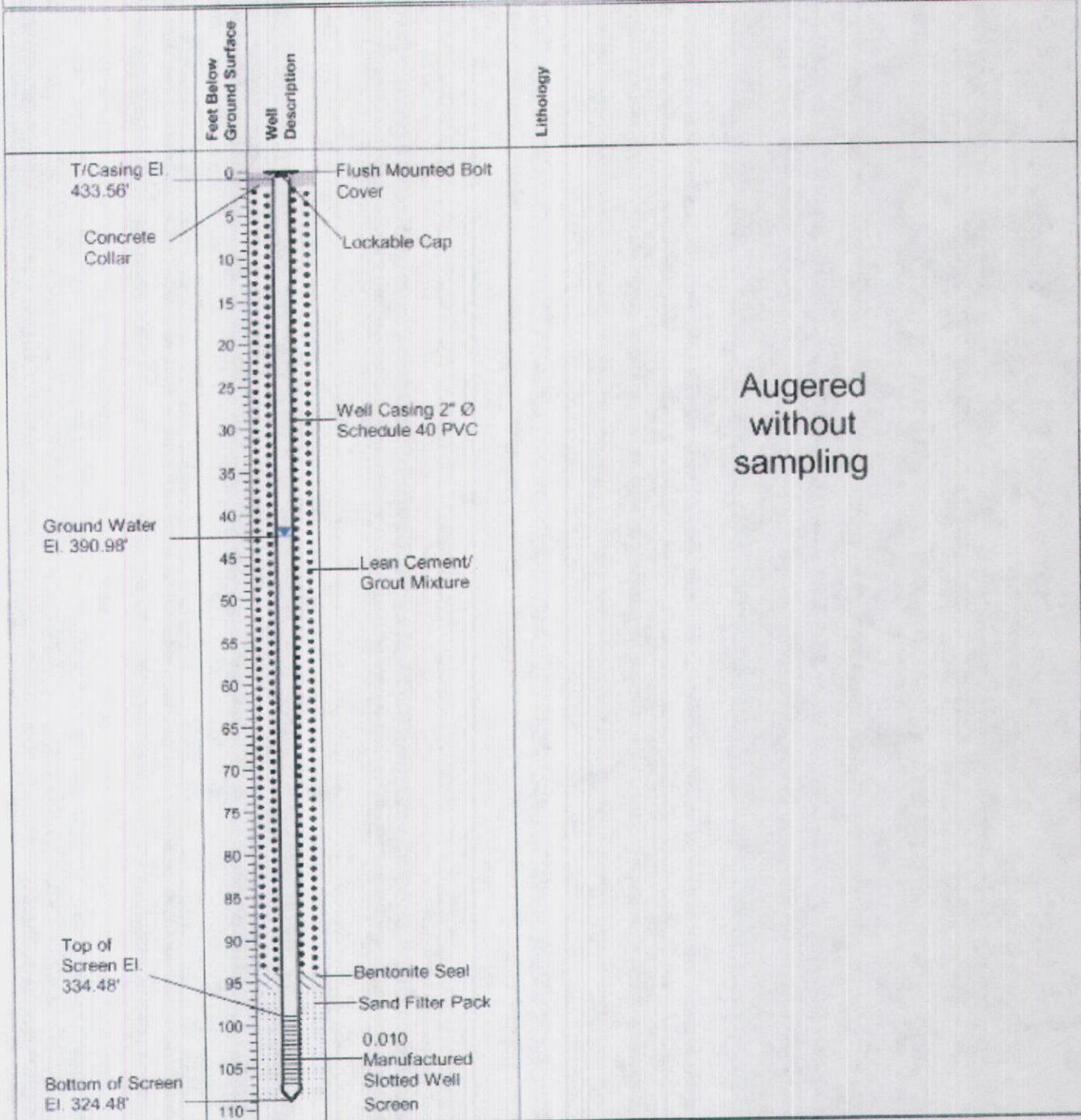


Drilling Contractor: Walker-Hill Environmental, Inc.
 Drilling Method: Rotary Auger & Mud Auger
 Drilling Equipment: Rotary Auger
 Drilling Started: 6/13/2007
 Drilling Ended: 6/13/2007

DRAFT

Project: Groundwater Assessment
 Location: Crystal Springs, MS
 Client: BorgWarner, Inc.
 Reviewed By: S. Spinner

Well Number: MW-27
 Coordinates: E- 2287498.52 N- 902206.54
 Ground Surface: 433.48
 Logged By: Robert Martin



Drilling Contractor: Walker-Hill Environmental, Inc.
 Drilling Method: Rotary Auger/Mud Rotary
 Drilling Equipment: Rotary Auger
 Drilling Started: 7/17/2007
 Drilling Ended: 7/17/2007

DRAFT